

Ownership Map

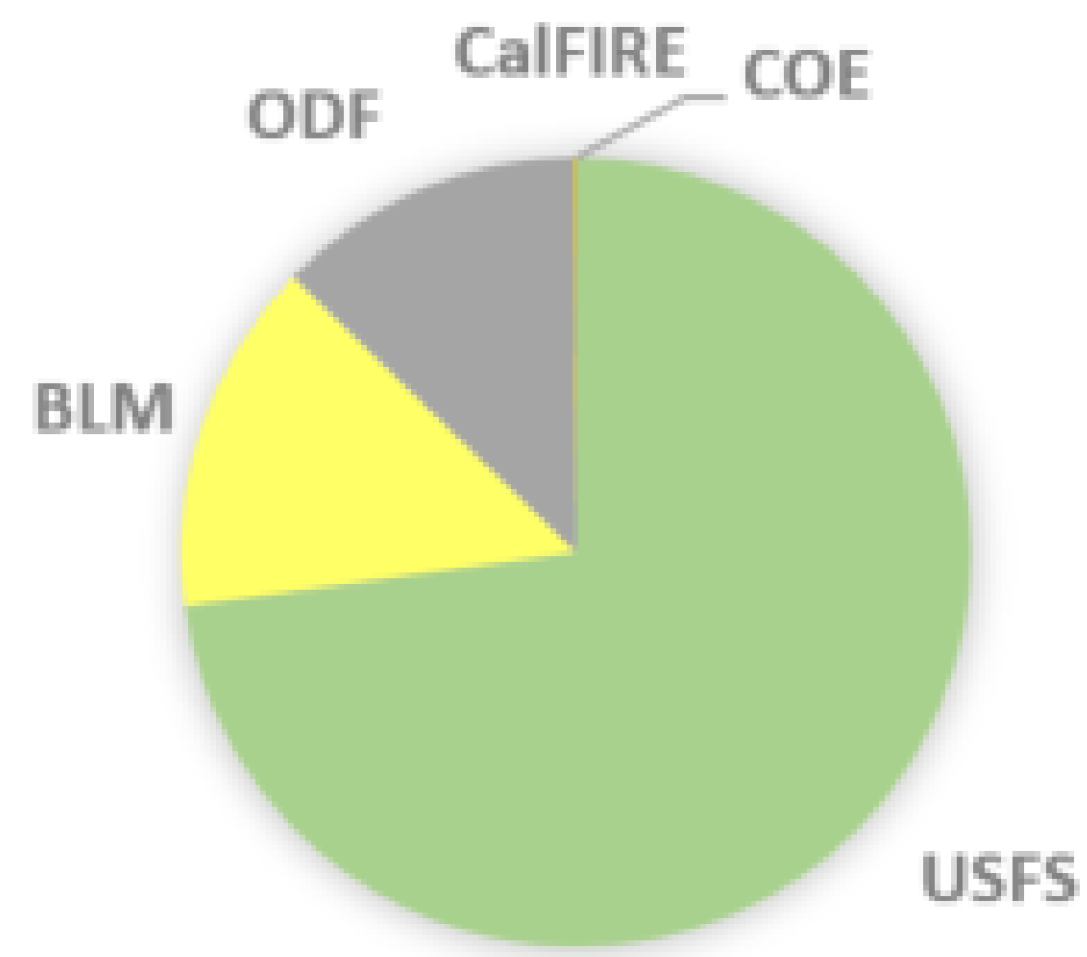
Aug 14, 2018

Legend

- Fire Perimeter
- ▲ Prominent Summits
- ★ City
- BLM Districts
- Ranger District
- State Boundaries
- Bureau of Land Management
- U.S. Fish and Wildlife Service
- Bureau of Reclamation
- U.S. Forest Service
- U.S. National Park Service
- State, Private, Local Govt, and Private

Total

Owner	Acres
USFS	125,091
BLM	24,881
ODF	21,623
CalFIRE	154
COE	60



Base of IR Data as of 8/13/2018 0700hrs

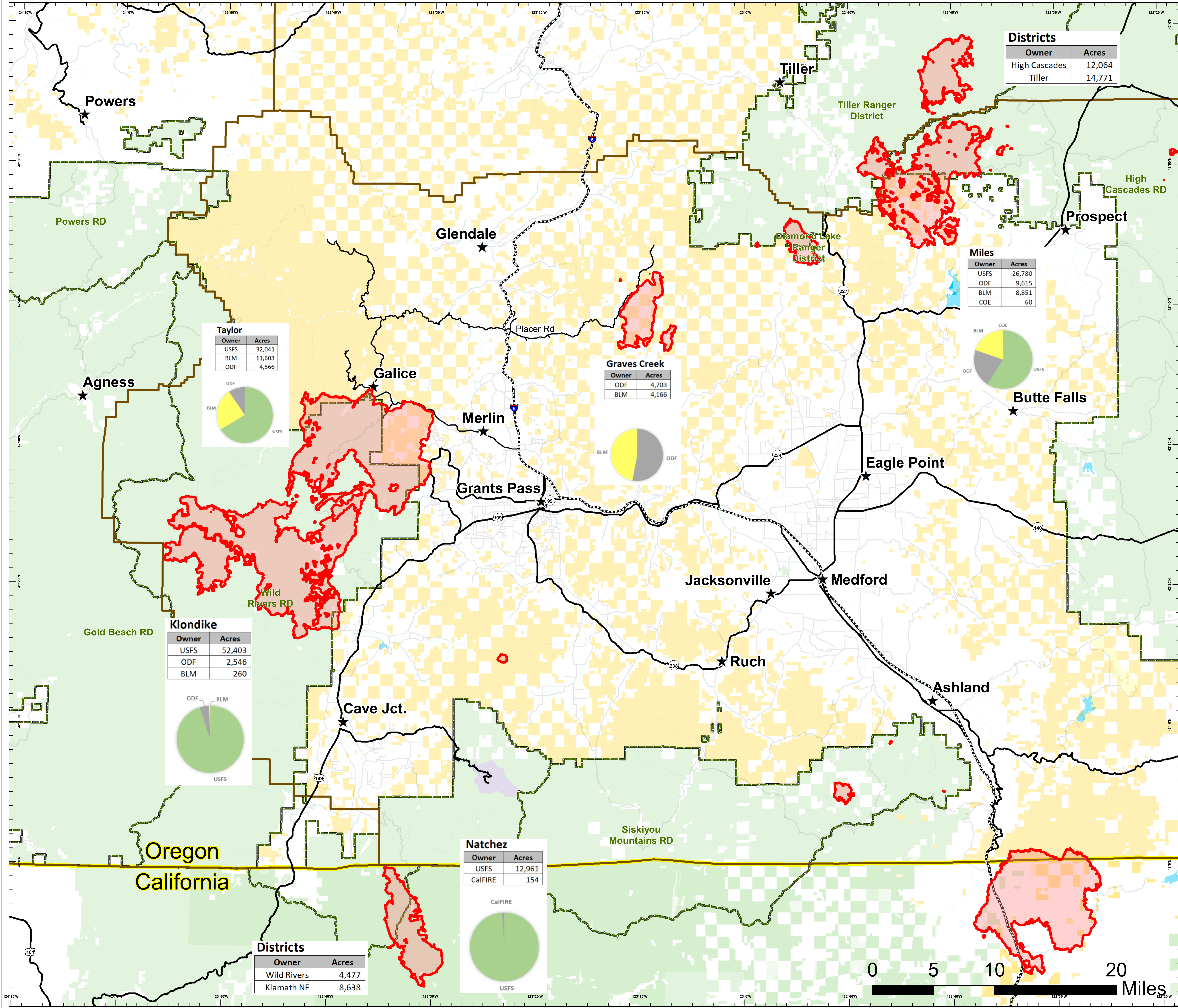
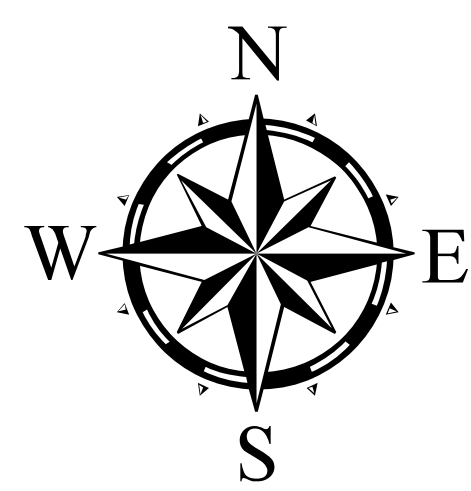


Created by:
stclark@blm.gov
dassali@fs.fed.us
juergs@firenet.gov

8/13/2018 15:24 PT



Use Avenza Maps App

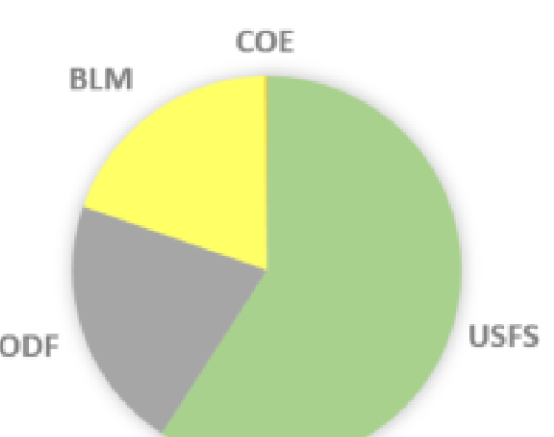


Districts

Owner	Acres
High Cascades	12,064
Tiller	14,771

Miles

Owner	Acres
USFS	26,780
ODF	9,615
BLM	8,851
COE	60



Taylor

Owner	Acres
USFS	32,041
BLM	11,603
ODF	4,566

Graves Creek

Owner	Acres
ODF	4,703
BLM	4,166

Klondike

Owner	Acres
USFS	52,403
ODF	2,546
BLM	260

Natchez

Owner	Acres
USFS	12,961
CalFIRE	154

Districts

Owner	Acres
Wild Rivers	4,477
Klamath NF	8,638

