

Ownership Map

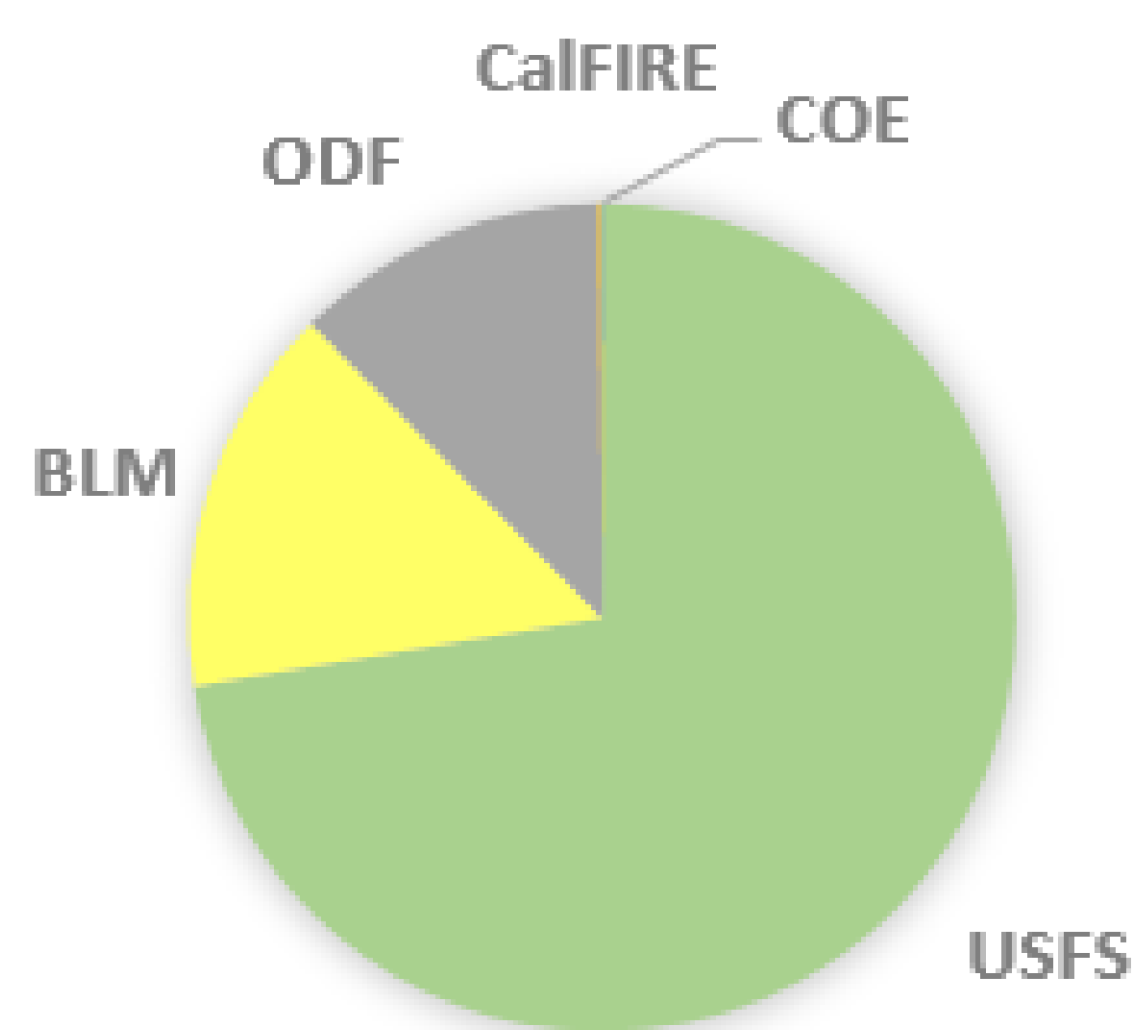
Aug 15, 2018

Legend

- Fire Perimeter
- ▲ Prominent Summits
- ★ City
- BLM Districts
- Ranger District
- State Boundaries
- Bureau of Land Management
- U.S. Fish and Wildlife Service
- Bureau of Reclamation
- U.S. Forest Service
- U.S. National Park Service
- State, Private, Local Govt, and Private
- COE - Army Corps of Engineer

Total

Owner	Acres
USFS	128,752
BLM	27,128
ODF	21,872
CalFIRE	154
COE	60



Base of IR Data as of 8/13/2018 2200hrs

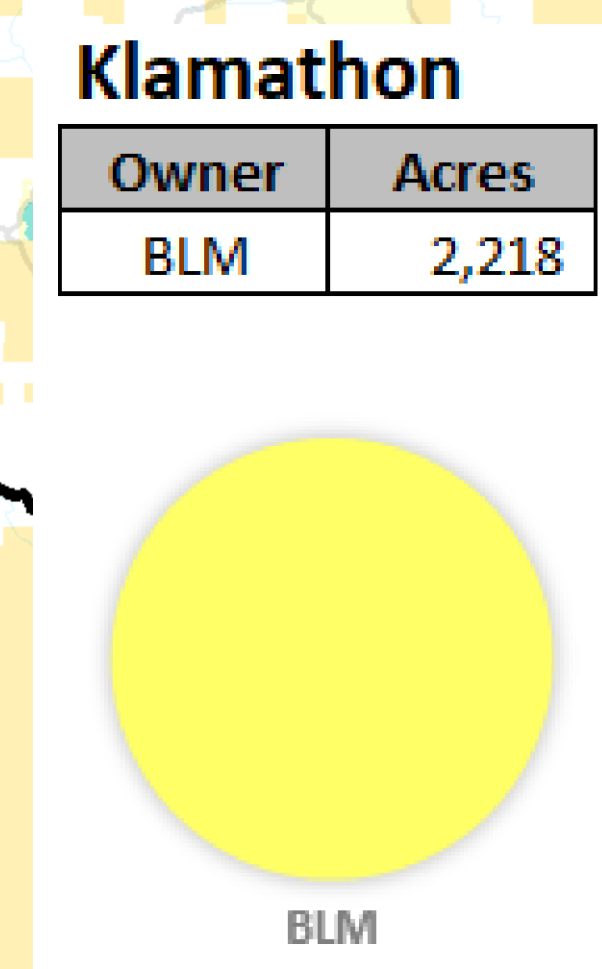
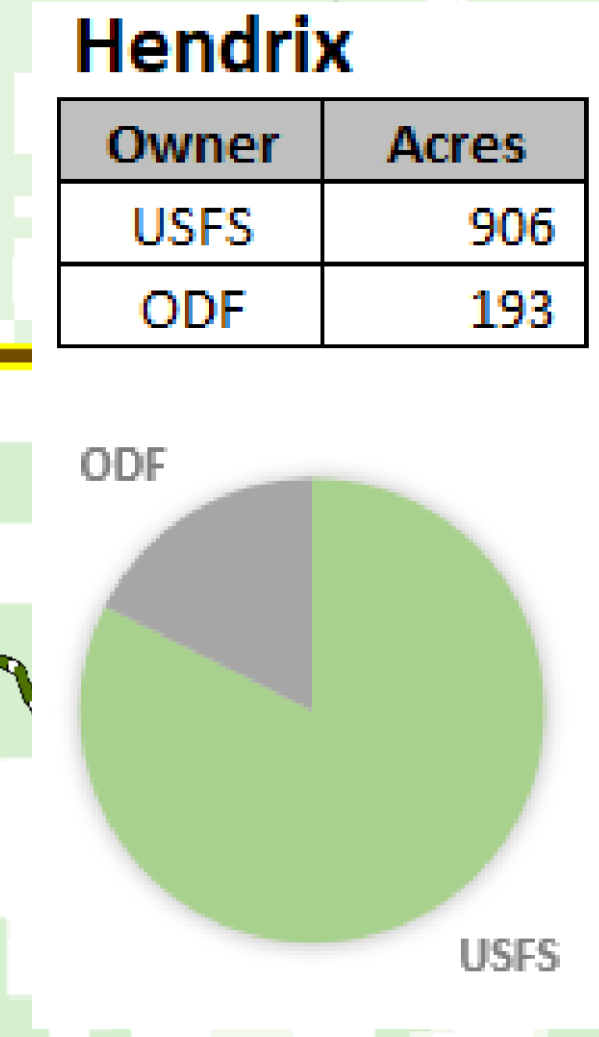
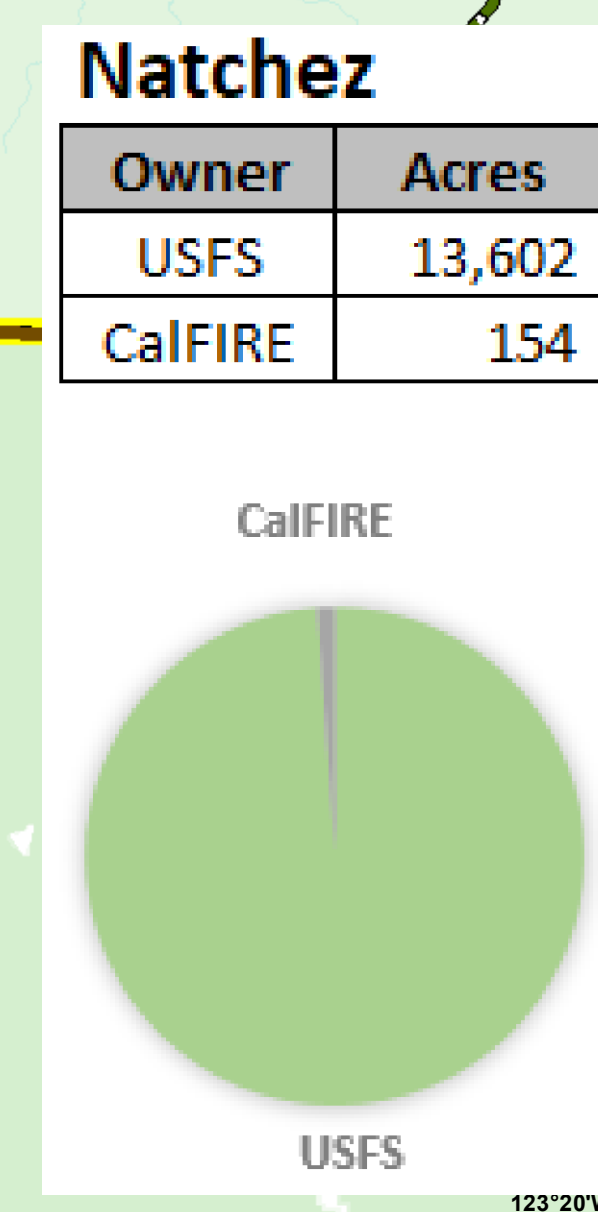
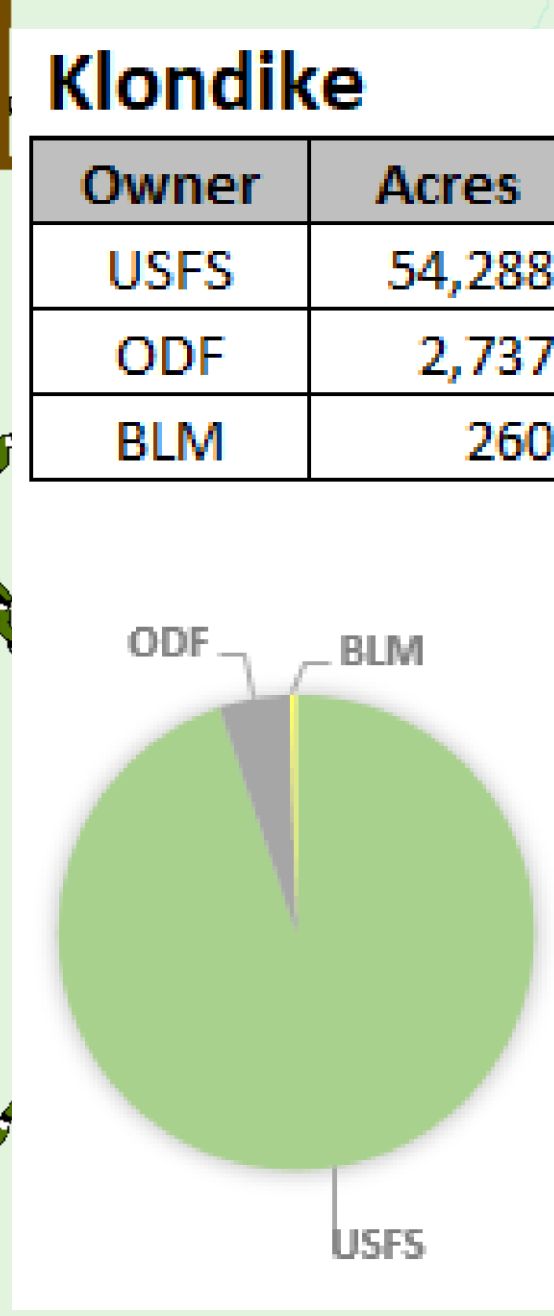
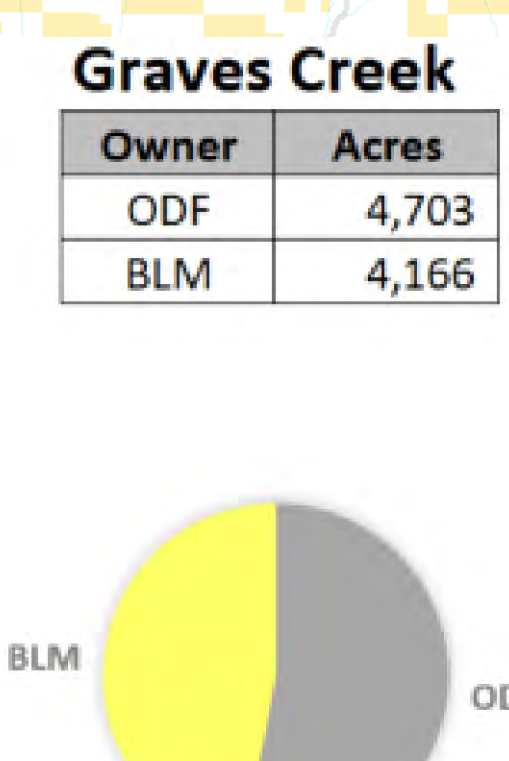
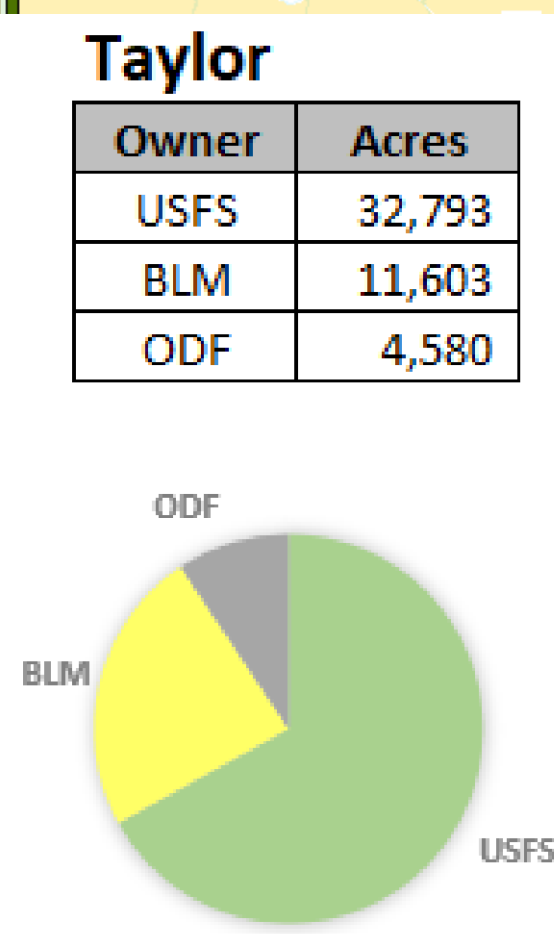
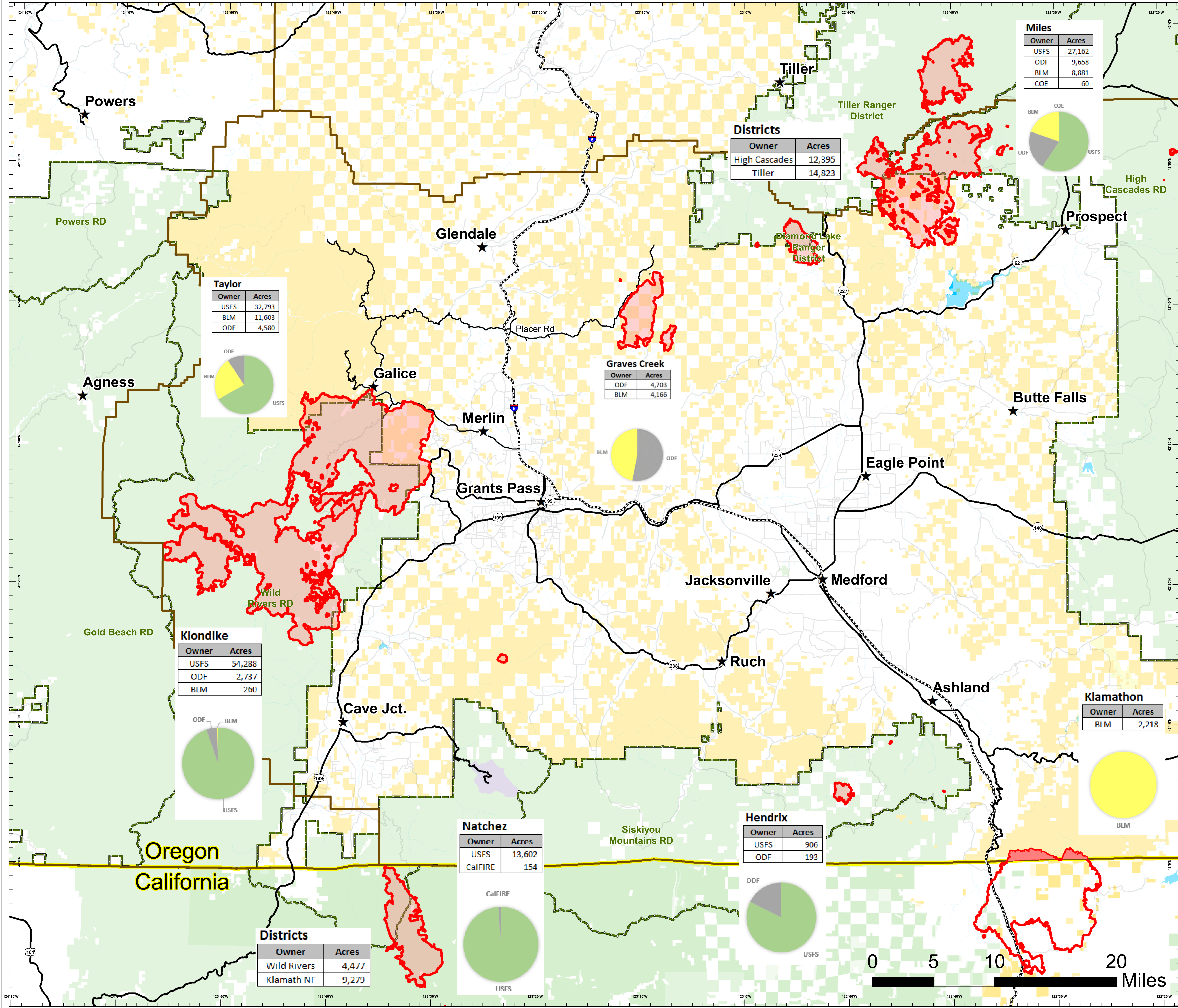
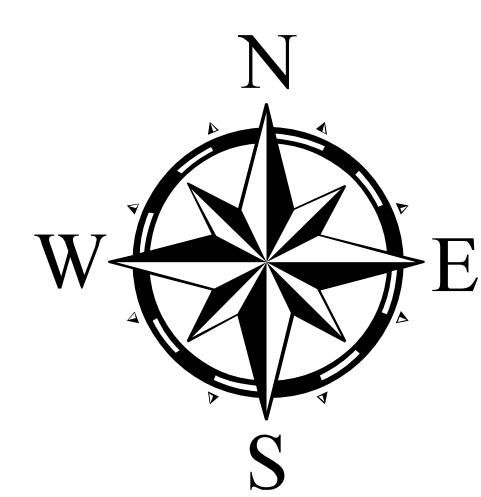


Created by:
stclark@blm.gov
dassali@fs.fed.us
juergs@firenet.gov

8/14/2018 18:24 PT



Use Avenza Maps App



Districts

Owner	Acres
Wild Rivers	4,477
Klamath NF	9,279

Districts

Owner	Acres
High Cascades	12,395
Tiller	14,823

Miles

Owner	Acres
USFS	27,162
ODF	9,658
BLM	8,881
COE	60

