

# Ownership Map

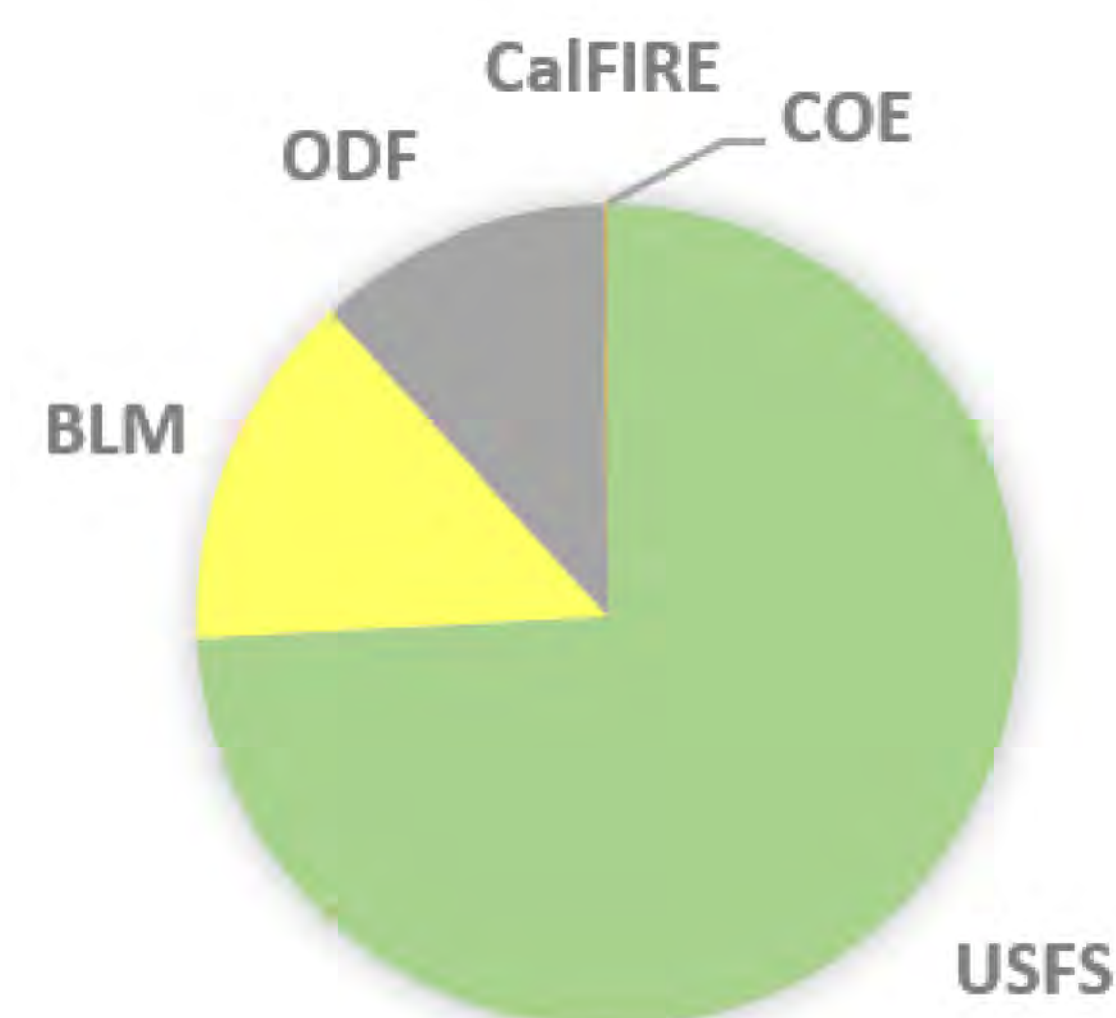
Aug 17, 2018

## Legend

- Fire Perimeter
- ▲ Prominent Summits
- ★ City
- BLM Districts
- Ranger District
- State Boundaries
- Bureau of Land Management
- U.S. Fish and Wildlife Service
- Bureau of Reclamation
- U.S. Forest Service
- U.S. National Park Service
- State, Private, Local Govt, and Private
- COE - Army Corps of Engineer

## Total

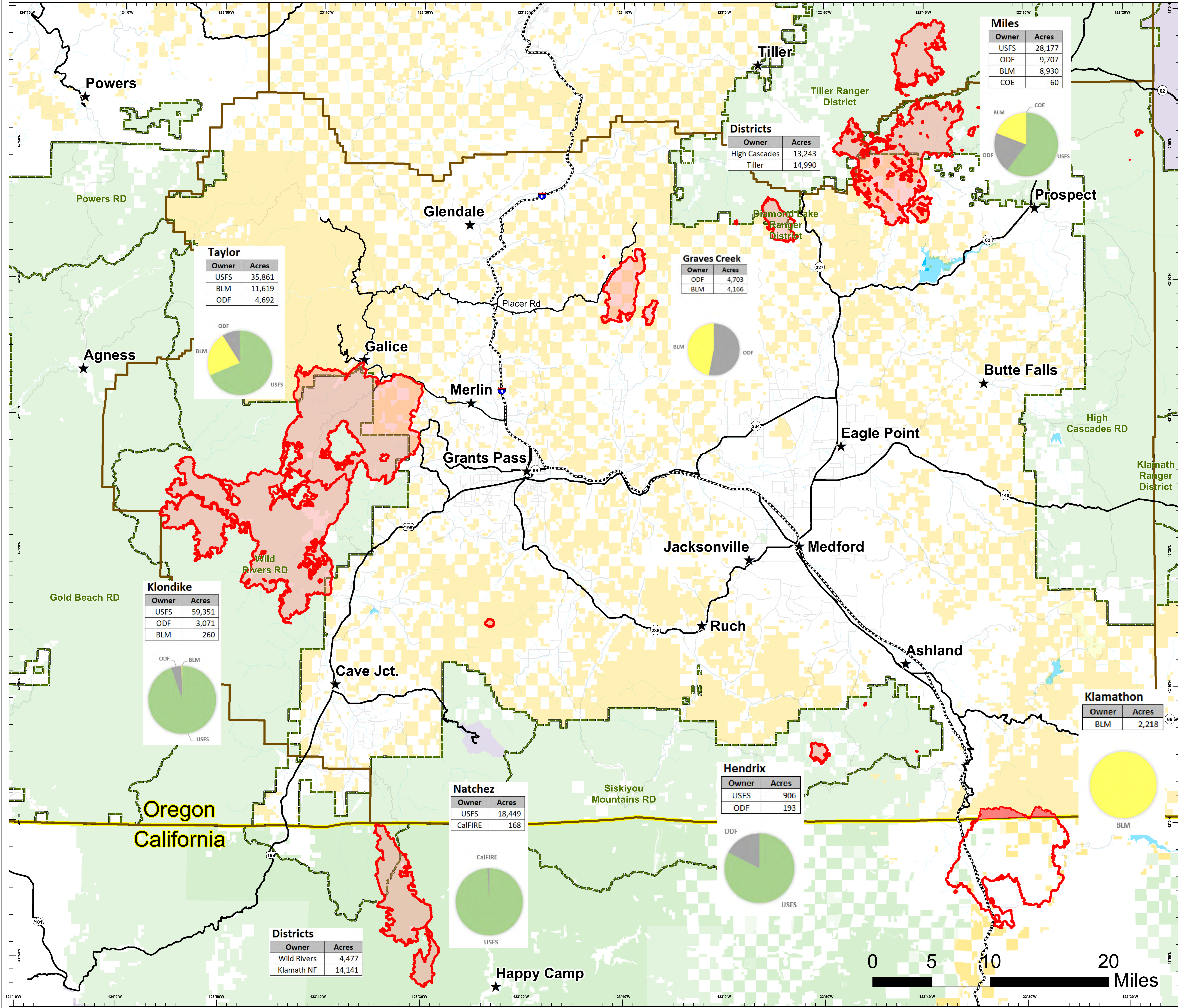
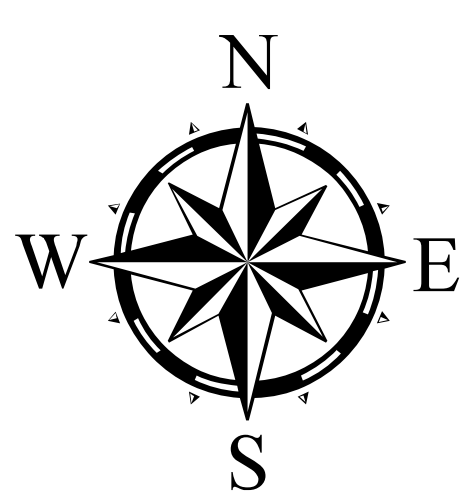
Owner	Acres
USFS	142,745
BLM	27,193
ODF	22,365
CalFIRE	168
COE	60
<b>Total</b>	<b>192,532</b>



Base of IR Data as of 8/17/2018 0200hrs

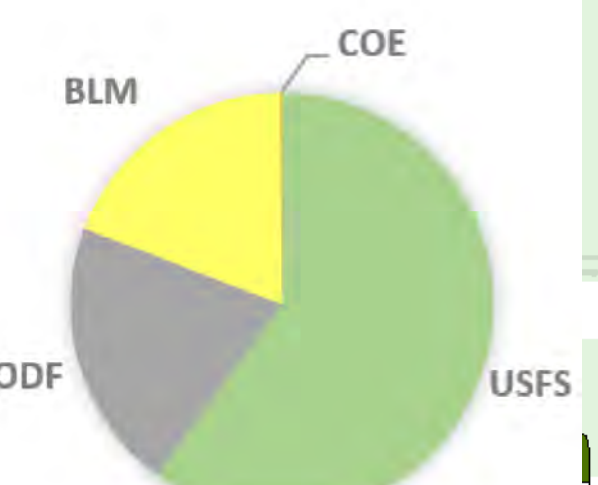


Created by:  
stclark@blm.gov  
dassall@fs.fed.us  
juerge@firenet.gov  
8/17/2018 5:51 PT



### Miles

Owner	Acres
USFS	28,177
ODF	9,707
BLM	8,930
COE	60

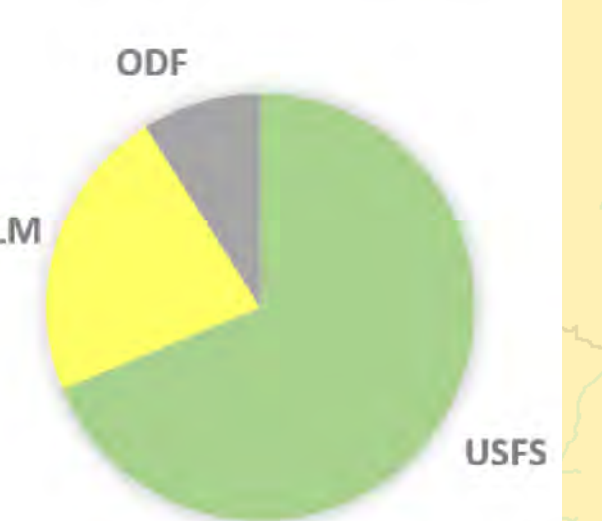


### Districts

Owner	Acres
High Cascades	13,243
Tiller	14,990

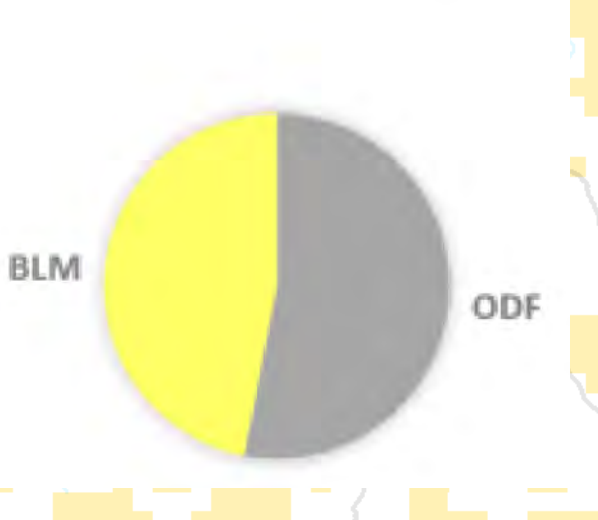
### Taylor

Owner	Acres
USFS	35,861
BLM	11,619
ODF	4,692



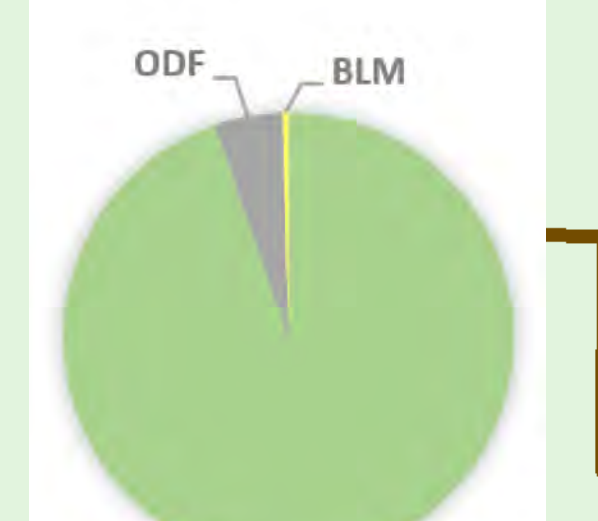
### Graves Creek

Owner	Acres
ODF	4,703
BLM	4,166



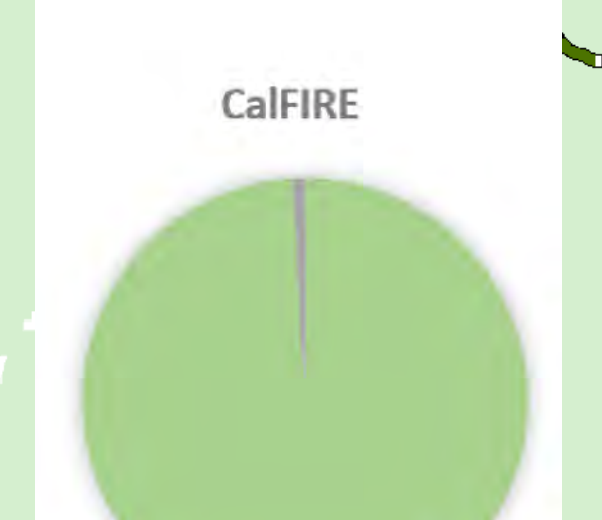
### Klondike

Owner	Acres
USFS	59,351
ODF	3,071
BLM	260



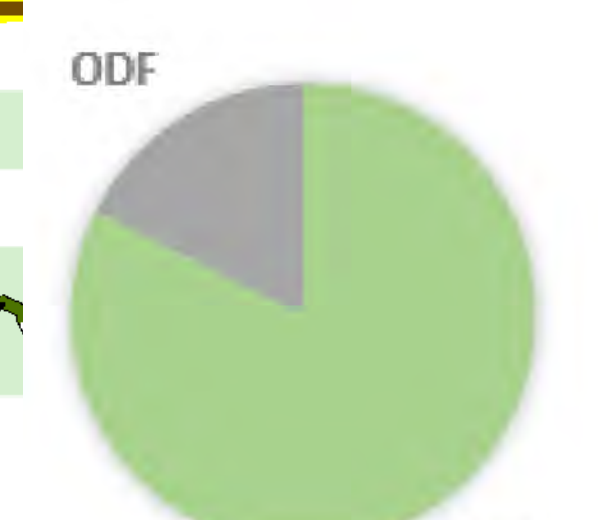
### Natchez

Owner	Acres
USFS	18,449
CalFIRE	168



### Hendrix

Owner	Acres
USFS	906
ODF	193



### Klamathon

Owner	Acres
BLM	2,218



### Districts

Owner	Acres
Wild Rivers	4,477
Klamath NF	14,141

