

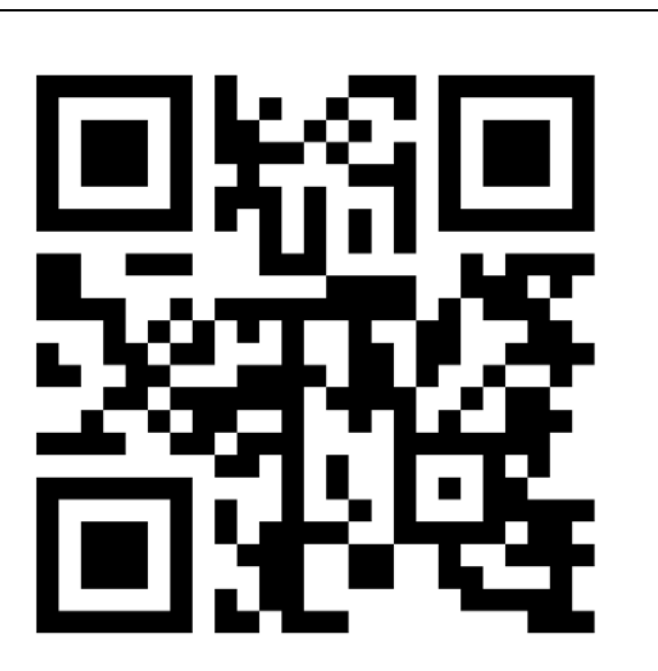
DIV T

**4x4 Vehicle Access Only
East of Marker**

H-3

H-2

H-1



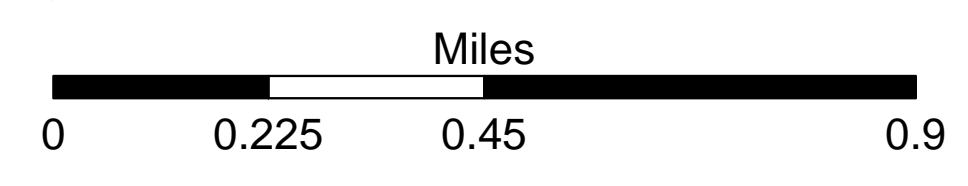
Legend

- Gate
- Helispot
- 4x4 Vehicle Access
- Division Break
- Drop Point
- Trail
- Bureau of Land Management
- State
- Private/Unknown
- Fritillaria Locations
- BLM Wilderness

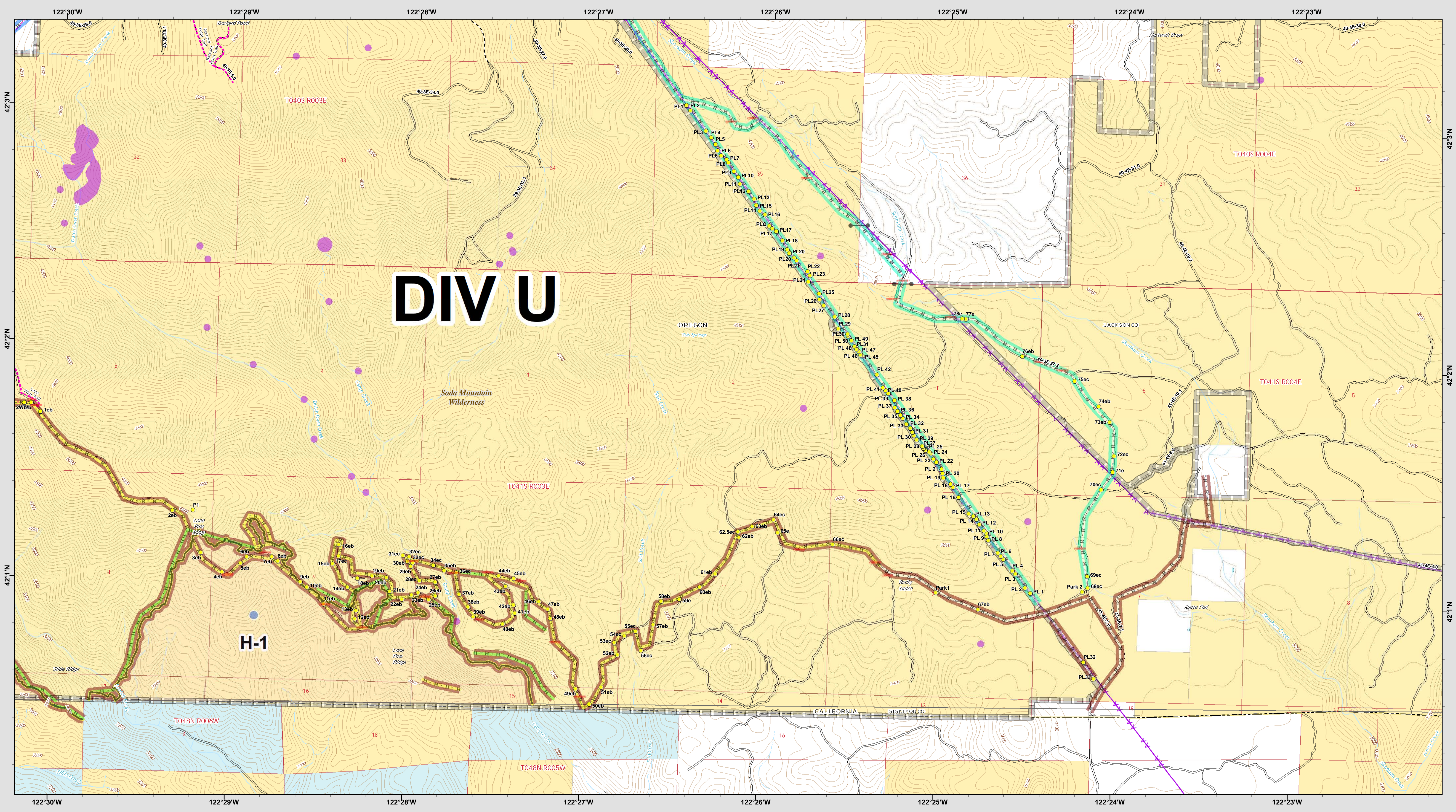
**Suppression Repair Map
NORTH KLAMATHON INCIDENT
OR-MED-268**

Rehab Repair Status Lines OR Rehab Repair Priority Groups OR

- Rehab Status
 - Completed
 - Working On
 - Not Started
 - Tracking Only
- Priority
 - 1st Priority
 - 2nd Priority
 - 3rd Priority



**North Klamathon
Suppression Repair**
OR-MED-268
Sept. 12, 2018
NAD83
1:12,690



DIV U

H-1



Gate

 Hotspot

 Trail

 Transmission Lines

 Bureau of Land Management

 State

 Private/Unknown

 Fritillaria Locations

 BLM Wilderness

Suppression Repair Map
 NORTH KLAMATHON INCIDENT
 OR-MED-268

Rehab Repair Status Lines OR Rehab Repair Priority Groups OR

Rehab Status Completed Working On Not Started Tracking Only	Priority 1st Priority 2nd Priority 3rd Priority
--------------------------------------------------------------------------------	-----------------------------------------------------------------

Miles
 0 0.225 0.45 0.9

North Klamathon
 Suppression Repair
 OR-MED-268
 Sept. 12, 2018
 NAD83
 1:12,690