


**Suppression Repair Map Overview**  
**NORTH KLAMATHON INCIDENT**  
 OR-MED-268

Miles

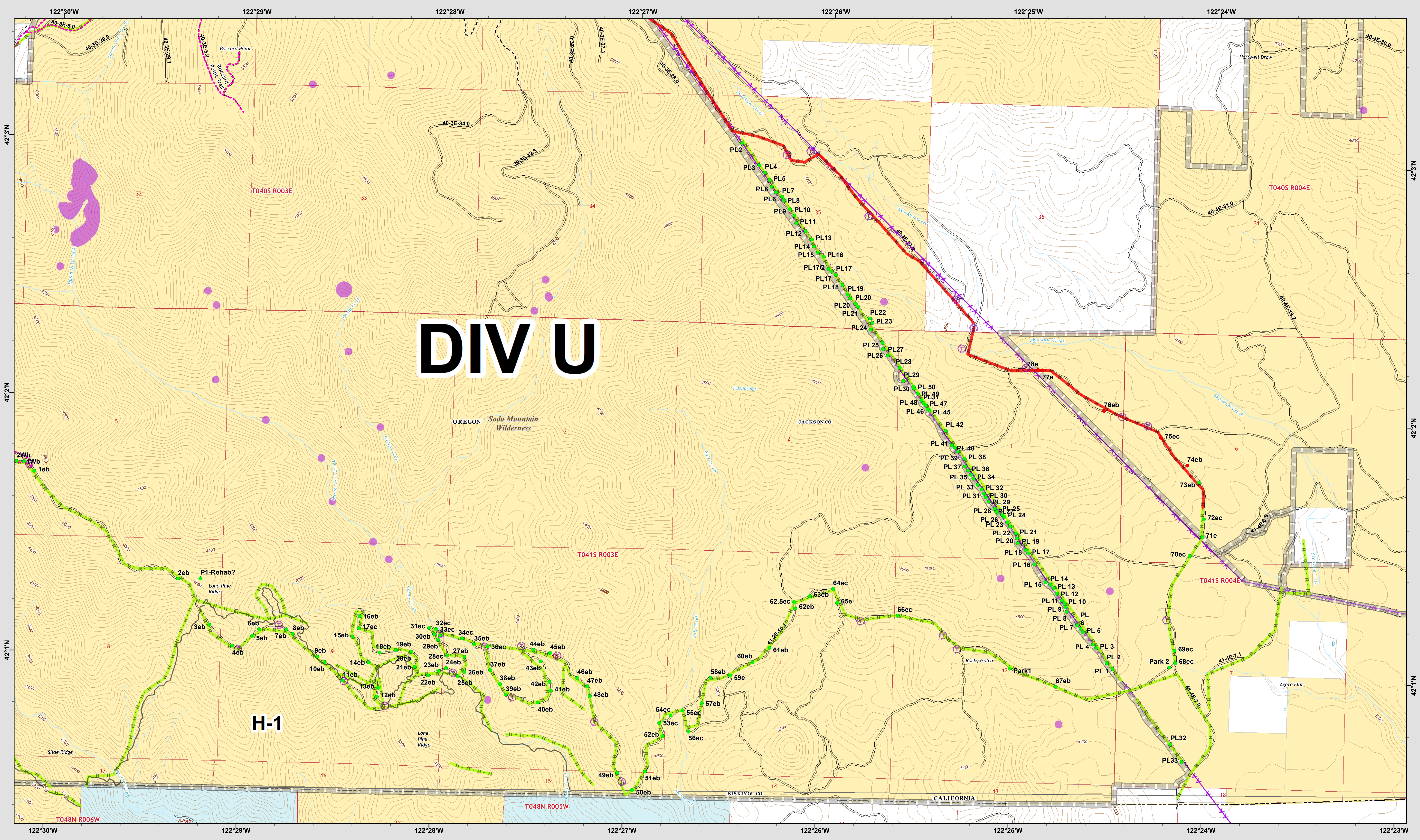
0      0.5      1      2

- |  |                                  |  |                  |
|--|----------------------------------|--|------------------|
|  | Completed - Inspected            |  | Repair Needed    |
|  | Completed - Ready for Inspection |  | Unknown          |
|  | In Progress                      |  | No Repair Needed |

North Klamathon  
 Suppression Repair  
 PNLYL8 (1502)  
 OR-MED-268  
 Sept. 30, 2018  
 NAD83  
 1:22,410

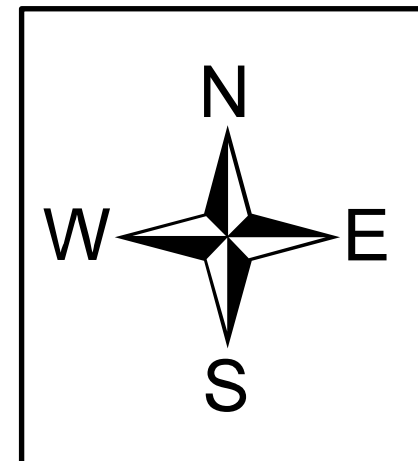
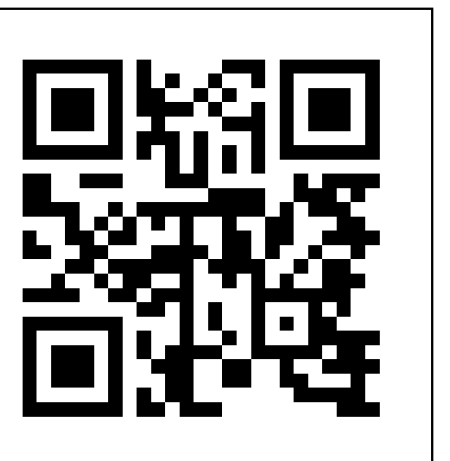
Repair\_D\_Tile\_land\_20180920\_Klamathon\_CASK0004641





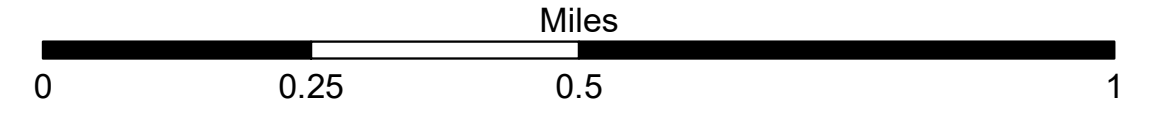
**DIV U**

**H-1**



- Trail
- Transmission Lines
- Bureau of Land Management
- U.S. Forest Service
- State
- Private/Unknown
- Drop Point
- 4x4 Vehicle Access
- Pitfall Locations
- AM Wilderness
- Truck Turnout
- Division Break

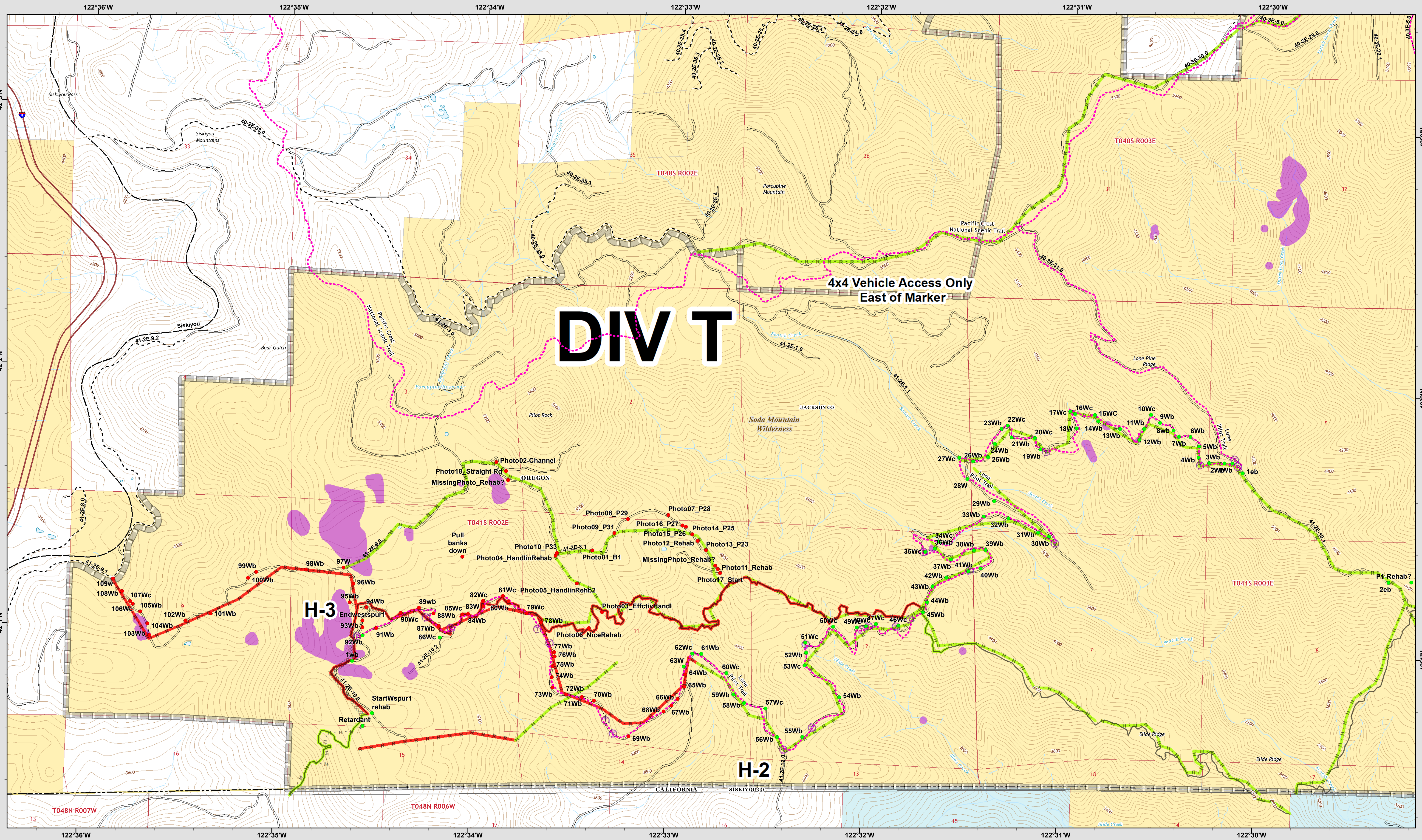
Suppression Repair Map EAST  
 NORTH KLAMATHON INCIDENT  
 OR-MED-268



- Completed - Inspected
- Completed - Ready for Inspection
- In Progress
- Repair Needed
- Unknown
- No Repair Needed

North Klamathon  
 Suppression Repair  
 PNL18 (1502)  
 OR-MED-268  
 Sept. 30, 2018  
 NAD83  
 1:11,360



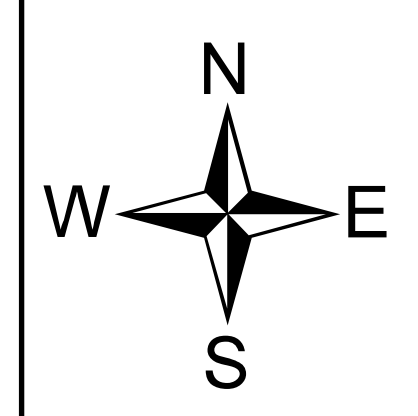


**DIV T**

4x4 Vehicle Access Only  
East of Marker

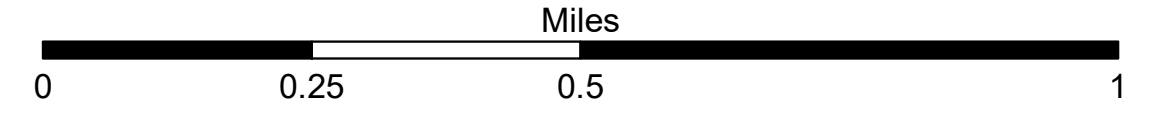
**H-3**

**H-2**



- Road
- Drop Point
- Trail
- Transmission Lines
- Bureau of Land Management
- U.S. Forest Service
- State
- Private/Unknown
- Division Break
- Fireline Locations
- M Wilderness
- Truck Turnout

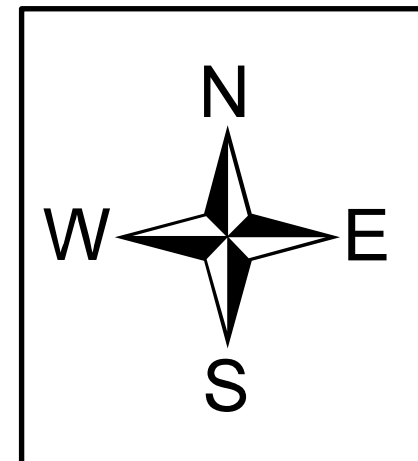
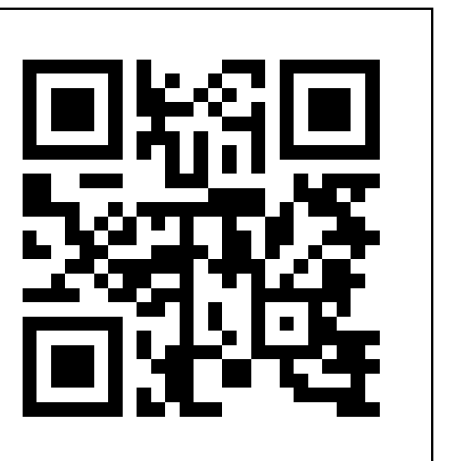
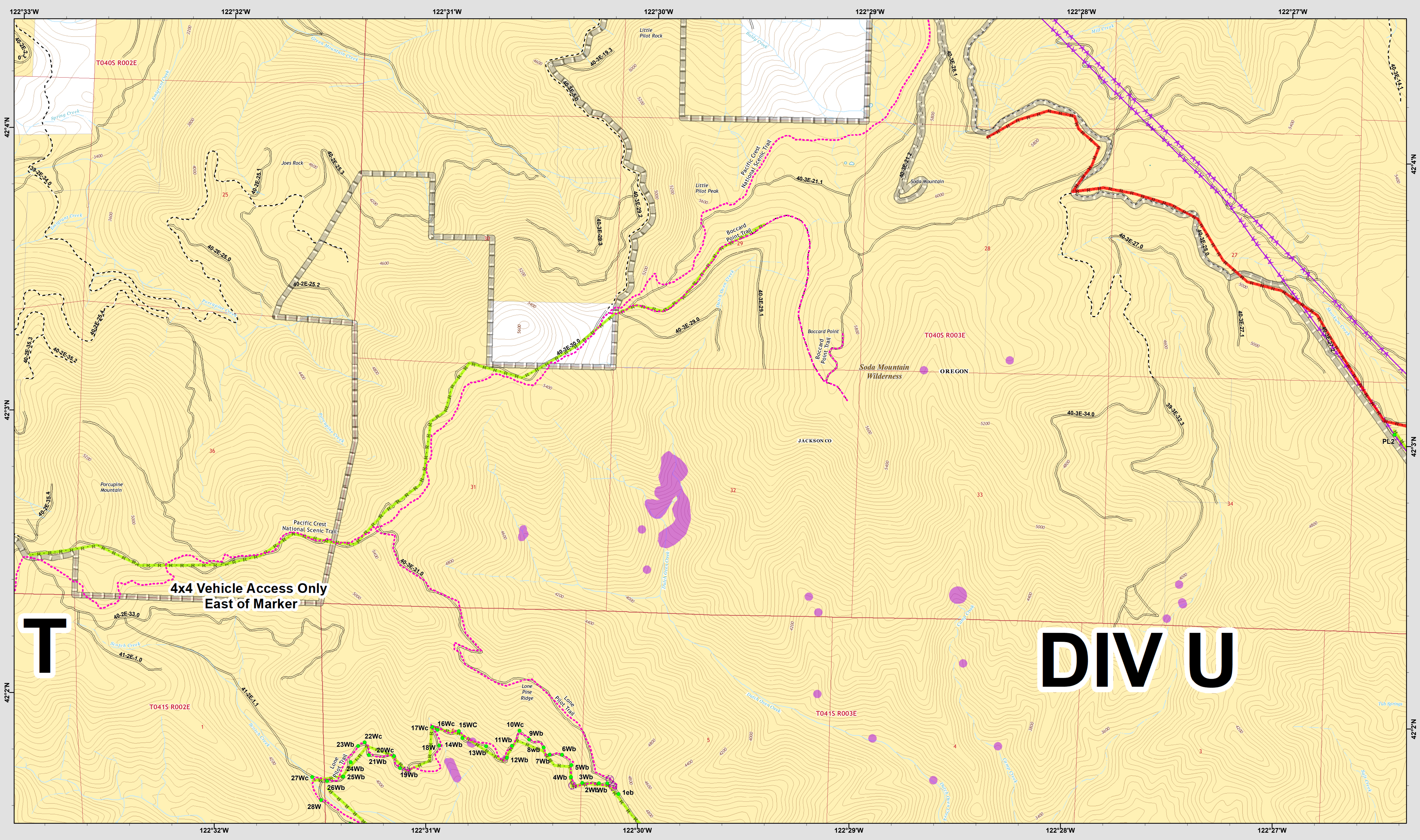
Suppression Repair Map WEST  
NORTH KLAMATHON INCIDENT  
OR-MED-268



- Completed - Inspected
- Completed - Ready for Inspection
- In Progress
- Repair Needed
- Unknown
- No Repair Needed

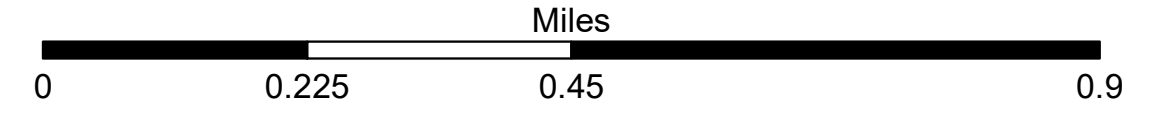
North Klamathon  
Suppression Repair  
PNLYL8 (1502)  
OR-MED-268  
Sept. 30, 2018  
NAD83  
1:11,320





- Road
- Drop Point
- Trail
- Transmission Lines
- Wilderness Locations
- Bureau of Land Management
- U.S. Forest Service
- State
- Private/Unknown
- Truck Turnaround
- Division Break

**Suppression Repair Map NORTH**  
**NORTH KLAMATHON INCIDENT**  
 OR-MED-268



- Completed - Inspected
- Completed - Ready for Inspection
- In Progress
- Repair Needed
- Unknown
- No Repair Needed

North Klamathon  
 Suppression Repair  
 PNLYL8 (1502)  
 OR-MED-268  
 Sept. 30, 2018  
 NAD83  
 1:10,360