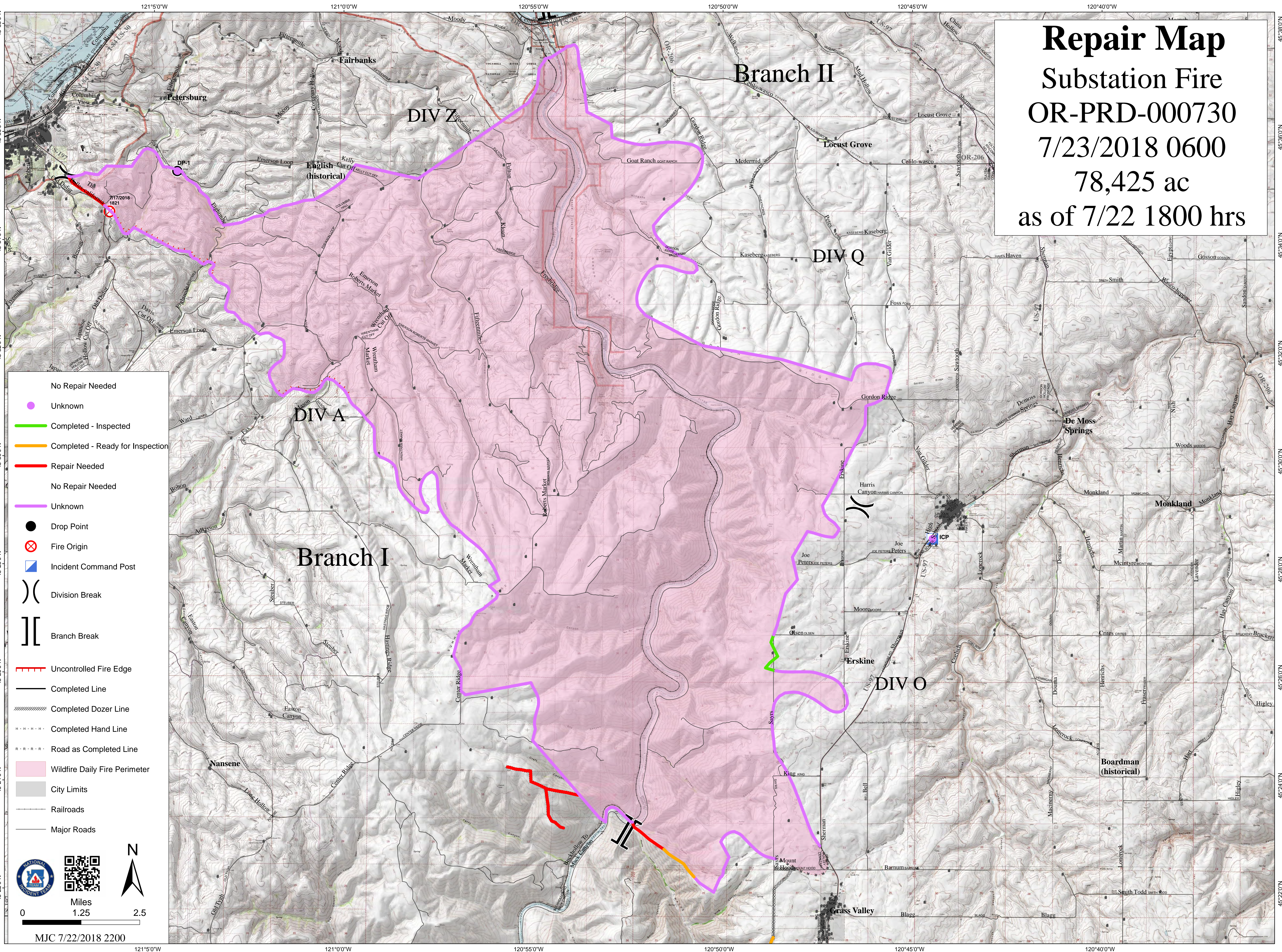


**Repair Map**  
**Substation Fire**  
**OR-PRD-000730**  
**7/23/2018 0600**  
**78,425 ac**  
**as of 7/22 1800 hrs**



- No Repair Needed
- Unknown
- Completed - Inspected
- Completed - Ready for Inspection
- Repair Needed
- No Repair Needed
- Unknown
- Drop Point
- Fire Origin
- Incident Command Post
- Division Break
- Branch Break
- Uncontrolled Fire Edge
- Completed Line
- Completed Dozer Line
- Completed Hand Line
- Road as Completed Line
- Wildfire Daily Fire Perimeter
- City Limits
- Railroads
- Major Roads

Miles

0
1.25
2.5

MJC 7/22/2018 2200

45°38'0"N  
45°36'0"N  
45°34'0"N  
45°32'0"N  
45°30'0"N  
45°28'0"N  
45°26'0"N  
45°24'0"N  
45°22'0"N  
 121°50'W  
121°00'W  
120°55'W  
120°50'W  
120°45'W  
120°40'W