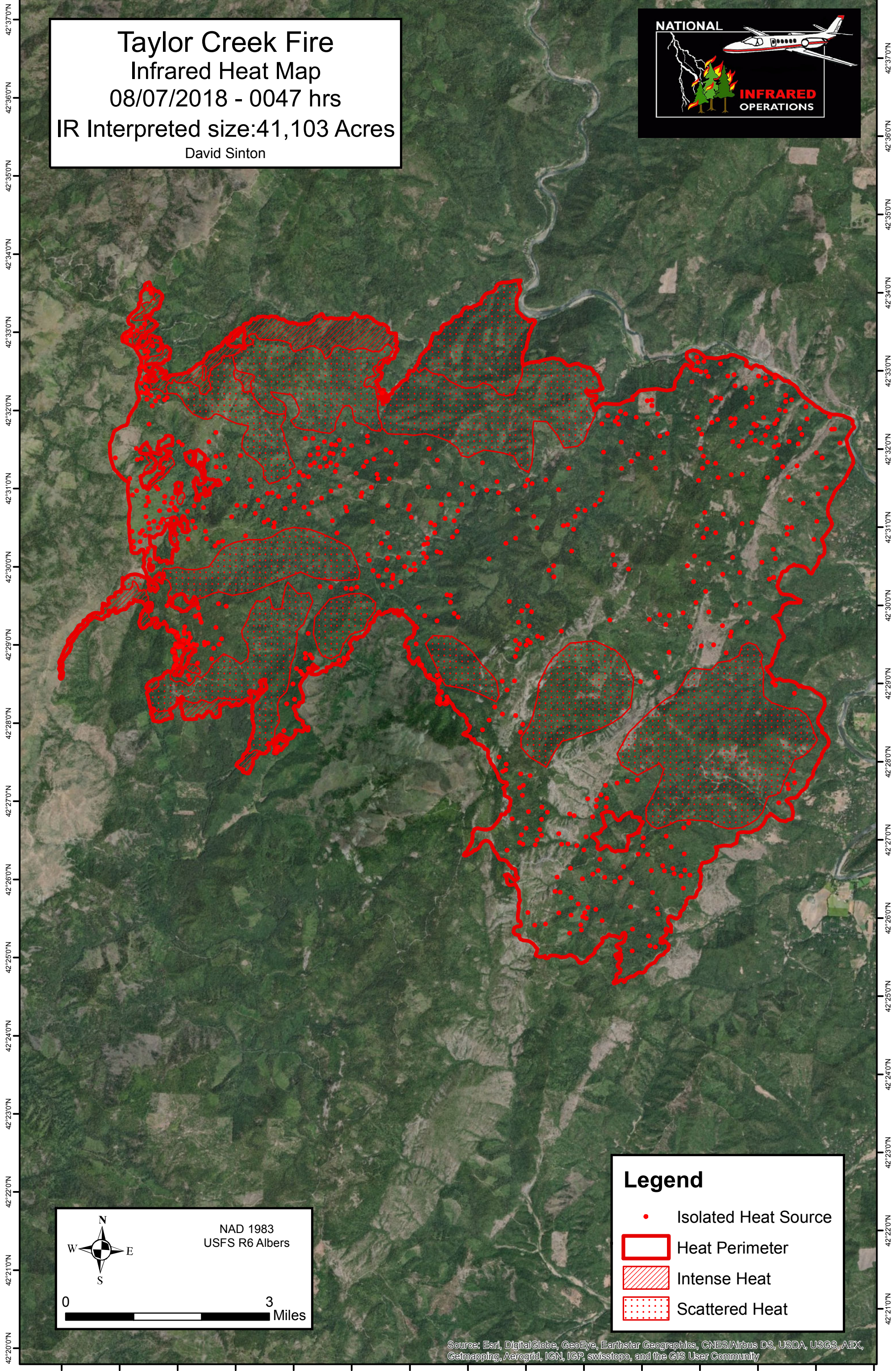


123°44'0"W 123°43'0"W 123°42'0"W 123°41'0"W 123°40'0"W 123°39'0"W 123°38'0"W 123°37'0"W 123°36'0"W 123°35'0"W 123°34'0"W 123°33'0"W 123°32'0"W 123°31'0"W 123°30'0"W

**Taylor Creek Fire**  
Infrared Heat Map  
08/07/2018 - 0047 hrs  
IR Interpreted size:41,103 Acres  
David Sinton



42°37'0"N  
42°36'0"N  
42°35'0"N  
42°34'0"N  
42°33'0"N  
42°32'0"N  
42°31'0"N  
42°30'0"N  
42°29'0"N  
42°28'0"N  
42°27'0"N  
42°26'0"N  
42°25'0"N  
42°24'0"N  
42°23'0"N  
42°22'0"N  
42°21'0"N  
42°20'0"N

42°37'0"N  
42°36'0"N  
42°35'0"N  
42°34'0"N  
42°33'0"N  
42°32'0"N  
42°31'0"N  
42°30'0"N  
42°29'0"N  
42°28'0"N  
42°27'0"N  
42°26'0"N  
42°25'0"N  
42°24'0"N  
42°23'0"N  
42°22'0"N  
42°21'0"N  
42°20'0"N

NAD 1983  
USFS R6 Albers

0 3 Miles

**Legend**

- Isolated Heat Source
- Heat Perimeter
- Intense Heat
- Scattered Heat

Source: Esri, DigitalGlobe, GeoEye, Earthstar Geographics, CNES/Airbus DS, USDA, USGS, AEX, Getmapping, Aerogrid, IGN, IGP, swisstopo, and the GIS User Community

123°43'0"W 123°42'0"W 123°41'0"W 123°40'0"W 123°39'0"W 123°38'0"W 123°37'0"W 123°36'0"W 123°35'0"W 123°34'0"W 123°33'0"W 123°32'0"W 123°31'0"W 123°30'0"W 123°29'0"W