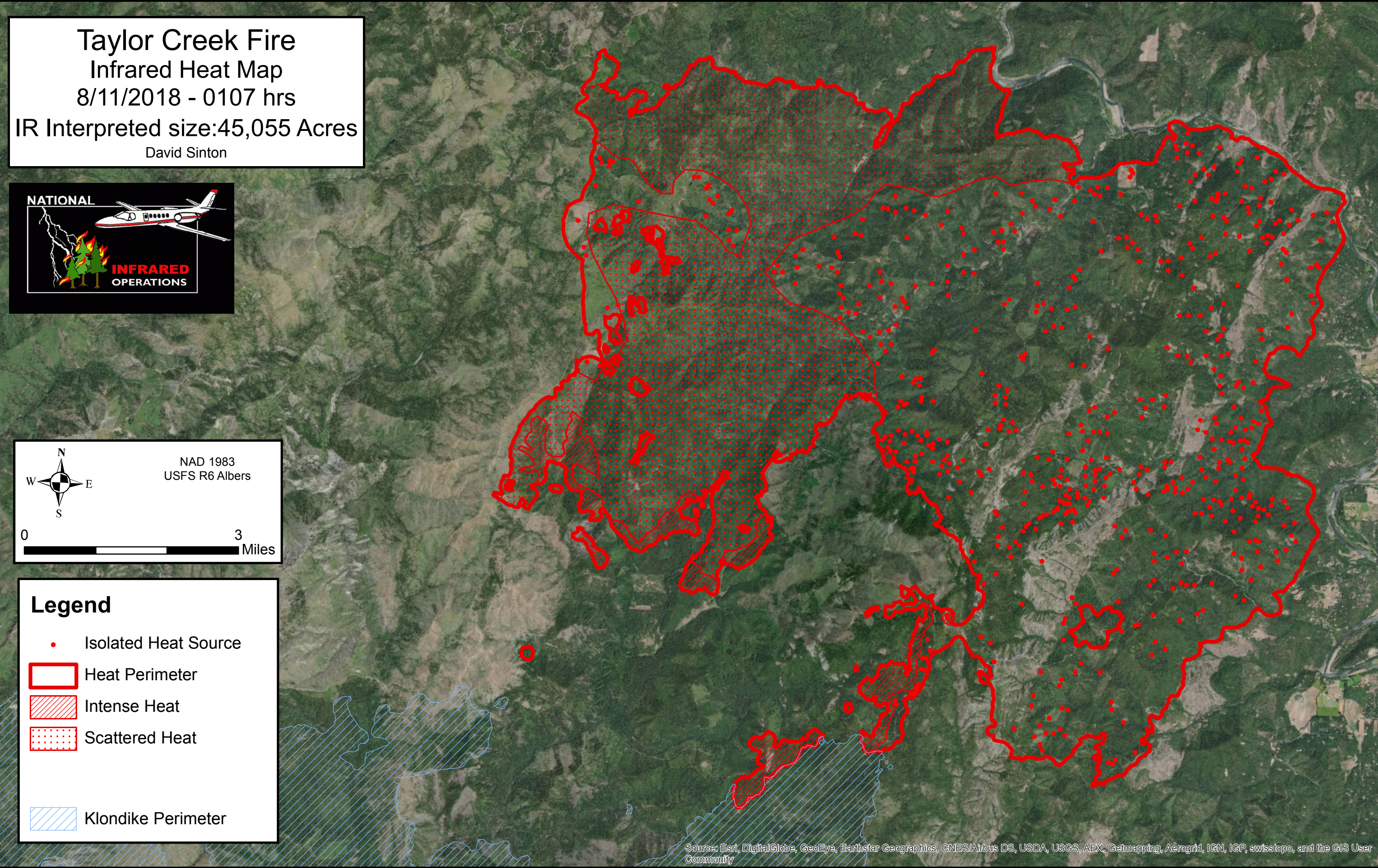


123°52'0"W 123°51'0"W 123°50'0"W 123°49'0"W 123°48'0"W 123°47'0"W 123°46'0"W 123°45'0"W 123°44'0"W 123°43'0"W 123°42'0"W 123°41'0"W 123°40'0"W 123°39'0"W 123°38'0"W 123°37'0"W 123°36'0"W 123°35'0"W 123°34'0"W 123°33'0"W 123°32'0"W 123°31'0"W 123°30'0"W



**Taylor Creek Fire**  
Infrared Heat Map  
8/11/2018 - 0107 hrs  
IR Interpreted size:45,055 Acres  
David Sinton



NAD 1983  
USFS R6 Albers

0 3 Miles

A compass rose showing North (N), South (S), East (E), and West (W). Below it is a scale bar from 0 to 3 miles.

**Legend**

- Isolated Heat Source
- ▭ Heat Perimeter
- ▨ Intense Heat
- ▤ Scattered Heat
- ▧ Klondike Perimeter

Source: Esri, DigitalGlobe, GeoEye, Earthstar Geographics, CNES/Airbus DS, USDA, USGS, AEX, Getmapping, Aerogrid, IGN, IGP, swisstopo, and the GIS User Community

123°51'0"W 123°50'0"W 123°49'0"W 123°48'0"W 123°47'0"W 123°46'0"W 123°45'0"W 123°44'0"W 123°43'0"W 123°42'0"W 123°41'0"W 123°40'0"W 123°39'0"W 123°38'0"W 123°37'0"W 123°36'0"W 123°35'0"W 123°34'0"W 123°33'0"W 123°32'0"W 123°31'0"W 123°30'0"W

42°33'0"N  
42°32'0"N  
42°31'0"N  
42°30'0"N  
42°29'0"N  
42°28'0"N  
42°27'0"N  
42°26'0"N  
42°25'0"N  
42°24'0"N

42°34'0"N  
42°33'0"N  
42°32'0"N  
42°31'0"N  
42°30'0"N  
42°29'0"N  
42°28'0"N  
42°27'0"N  
42°26'0"N  
42°25'0"N