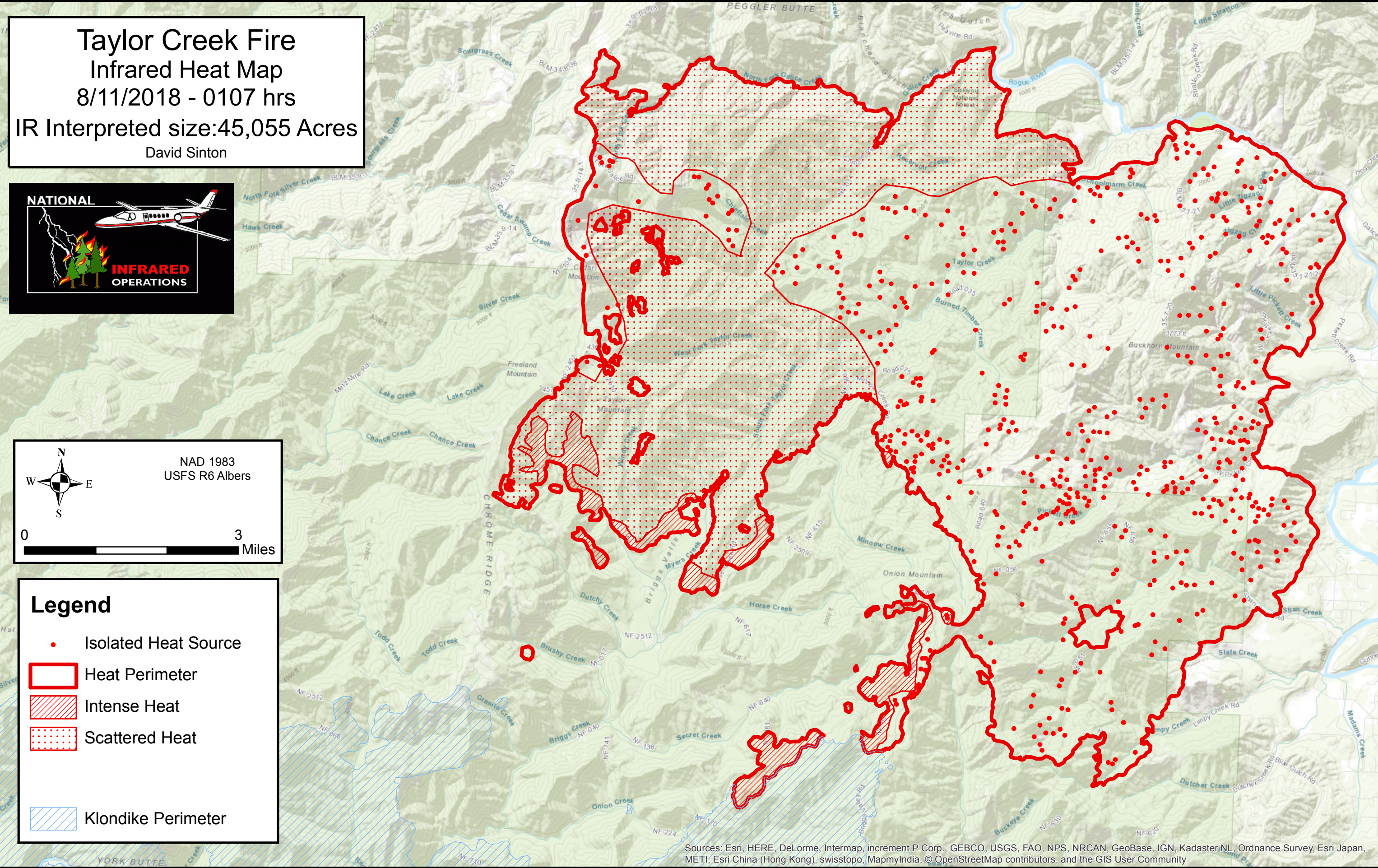


123°52'0"W 123°51'0"W 123°50'0"W 123°49'0"W 123°48'0"W 123°47'0"W 123°46'0"W 123°45'0"W 123°44'0"W 123°43'0"W 123°42'0"W 123°41'0"W 123°40'0"W 123°39'0"W 123°38'0"W 123°37'0"W 123°36'0"W 123°35'0"W 123°34'0"W 123°33'0"W 123°32'0"W 123°31'0"W 123°30'0"W



Taylor Creek Fire
Infrared Heat Map
8/11/2018 - 0107 hrs
IR Interpreted size:45,055 Acres
David Sinton



NAD 1983
USFS R6 Albers

0 3 Miles

Legend

- Isolated Heat Source
- ▭ Heat Perimeter
- ▨ Intense Heat
- ▤ Scattered Heat
- ▧ Klondike Perimeter

Sources: Esri, HERE, DeLorme, Intermap, increment P Corp., GEBCO, USGS, FAO, NPS, NRCAN, GeoBase, IGN, Kadaster NL, Ordnance Survey, Esri Japan, METI, Esri China (Hong Kong), swisstopo, MapmyIndia, © OpenStreetMap contributors, and the GIS User Community

123°51'0"W 123°50'0"W 123°49'0"W 123°48'0"W 123°47'0"W 123°46'0"W 123°45'0"W 123°44'0"W 123°43'0"W 123°42'0"W 123°41'0"W 123°40'0"W 123°39'0"W 123°38'0"W 123°37'0"W 123°36'0"W 123°35'0"W 123°34'0"W 123°33'0"W 123°32'0"W 123°31'0"W 123°30'0"W

42°33'0"N
42°32'0"N
42°31'0"N
42°30'0"N
42°29'0"N
42°28'0"N
42°27'0"N
42°26'0"N
42°25'0"N
42°24'0"N

42°34'0"N
42°33'0"N
42°32'0"N
42°31'0"N
42°30'0"N
42°29'0"N
42°28'0"N
42°27'0"N
42°26'0"N
42°25'0"N