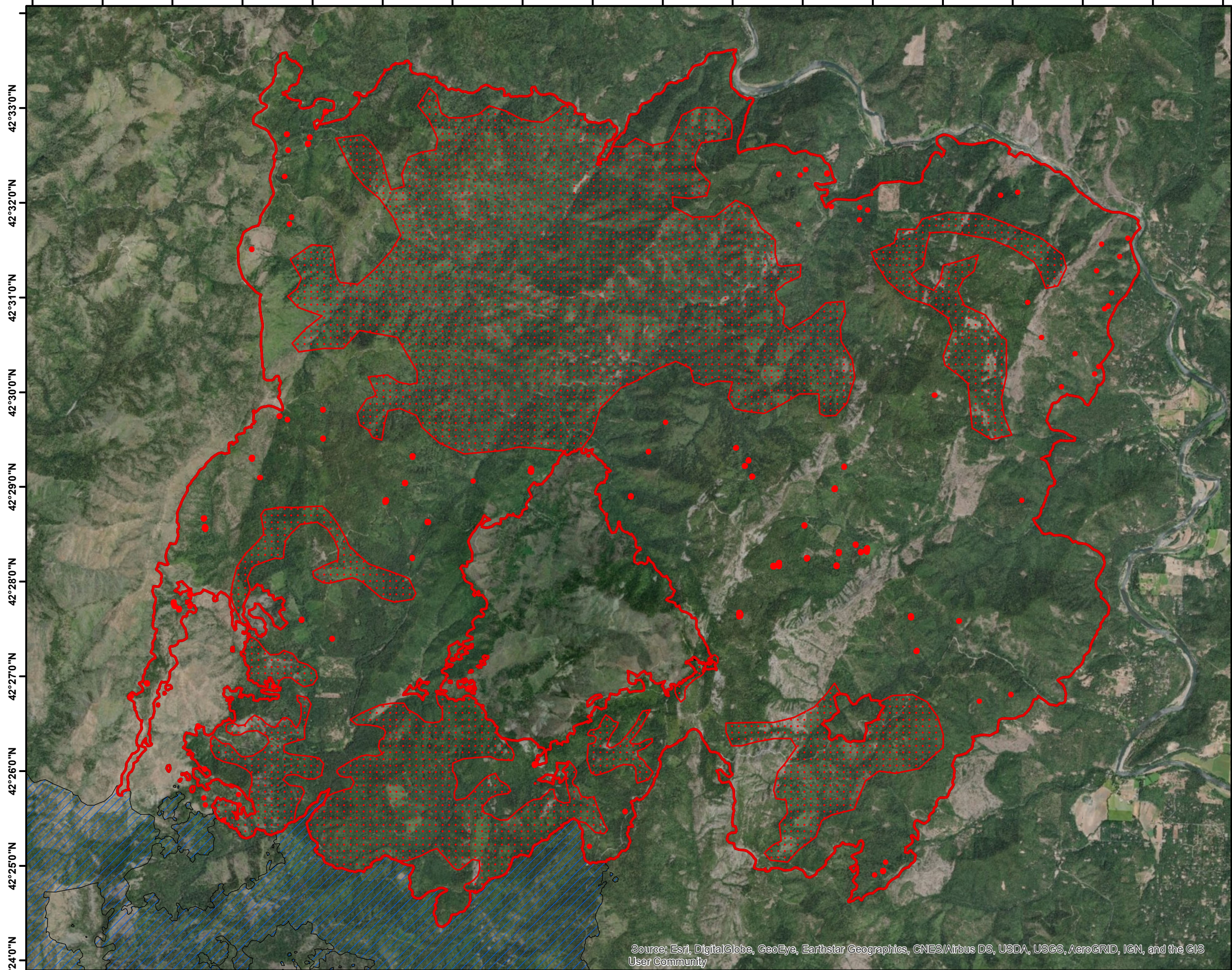







123°46'0"W 123°45'0"W 123°44'0"W 123°43'0"W 123°42'0"W 123°41'0"W 123°40'0"W 123°39'0"W 123°38'0"W 123°37'0"W 123°36'0"W 123°35'0"W 123°34'0"W 123°33'0"W 123°32'0"W 123°31'0"W 123°30'0"W 123°29'0"W



123°45'0"W 123°44'0"W 123°43'0"W 123°42'0"W 123°41'0"W 123°40'0"W 123°39'0"W 123°38'0"W 123°37'0"W 123°36'0"W 123°35'0"W 123°34'0"W 123°33'0"W 123°32'0"W 123°31'0"W 123°30'0"W 123°29'0"W

Taylor Creek OR-MED-000395 Infrared Heat Sources

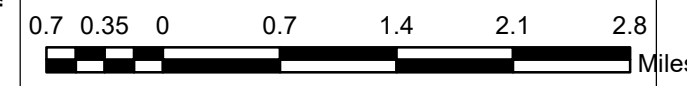


-  Heat Perimeter
-  Scattered Heat
-  Isolated Heat Sources
-  Previous Heat Perimeter
-  Klondike Perimeter

NAD 1983 USFS R6 Albers



IR Interpreter: Buck Buchanan
Interpreted Acres: 52,826
Date: 08/25/2018
Time Imagery Received: 0020 hrs. PDT



Source: Esri, DigitalGlobe, GeoEye, Earthstar Geographics, CNES/Airbus DS, USDA, USGS, AeroGRID, IGN, and the GIS User Community