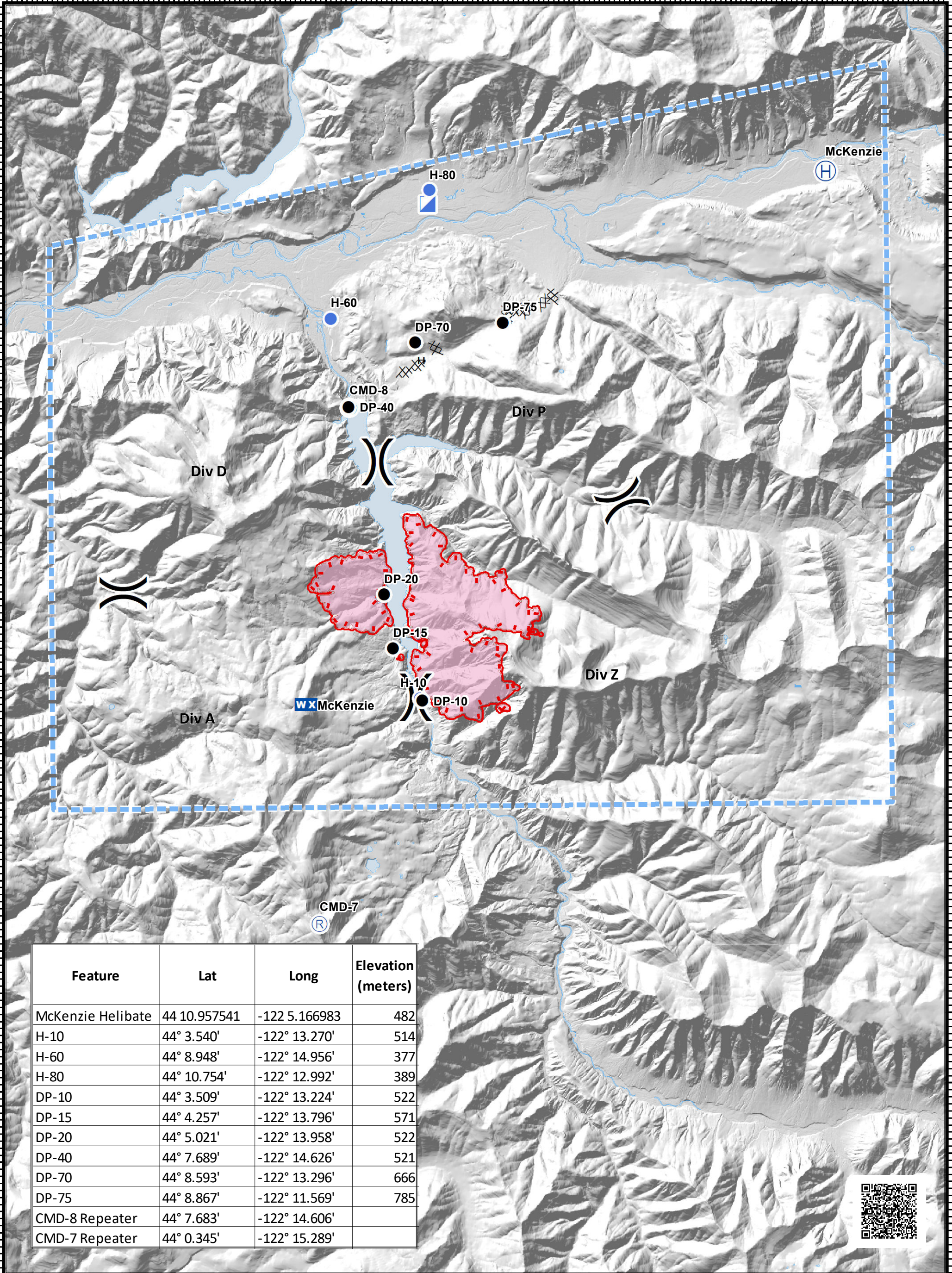


# Terwilliger Fire - Pilot Map

08/24/2018

122°20'W 122°18'W 122°16'W 122°14'W 122°12'W 122°10'W 122°9'W 122°8'W 122°7'W 122°6'W 122°5'W 122°4'W 122°3'W



Feature	Lat	Long	Elevation (meters)
McKenzie Helibate	44 10.957541	-122 5.166983	482
H-10	44° 3.540'	-122° 13.270'	514
H-60	44° 8.948'	-122° 14.956'	377
H-80	44° 10.754'	-122° 12.992'	389
DP-10	44° 3.509'	-122° 13.224'	522
DP-15	44° 4.257'	-122° 13.796'	571
DP-20	44° 5.021'	-122° 13.958'	522
DP-40	44° 7.689'	-122° 14.626'	521
DP-70	44° 8.593'	-122° 13.296'	666
DP-75	44° 8.867'	-122° 11.569'	785
CMD-8 Repeater	44° 7.683'	-122° 14.606'	
CMD-7 Repeater	44° 0.345'	-122° 15.289'	



**Terwilliger**  
**OR-WIF-180227**  
 Fire perimeter as of  
 08/23/2018 0305 hrs  
 3,209 Acres  
 NAD83 UTM11N

- Drop Point
- ◻ Incident Command Post
- ◻ TFR
- ◻ Wildfire Daily Fire Perimeter
- Ⓜ Helibase
- ◻ WX Mobile Weather Unit
- ) ( Division Break
- XXXX Completed Dozer Line
- Helispot
- Ⓜ Repeater
- H - Completed Hand Line
- Uncontrolled Fire Edge

0 0.250.5 1 Miles