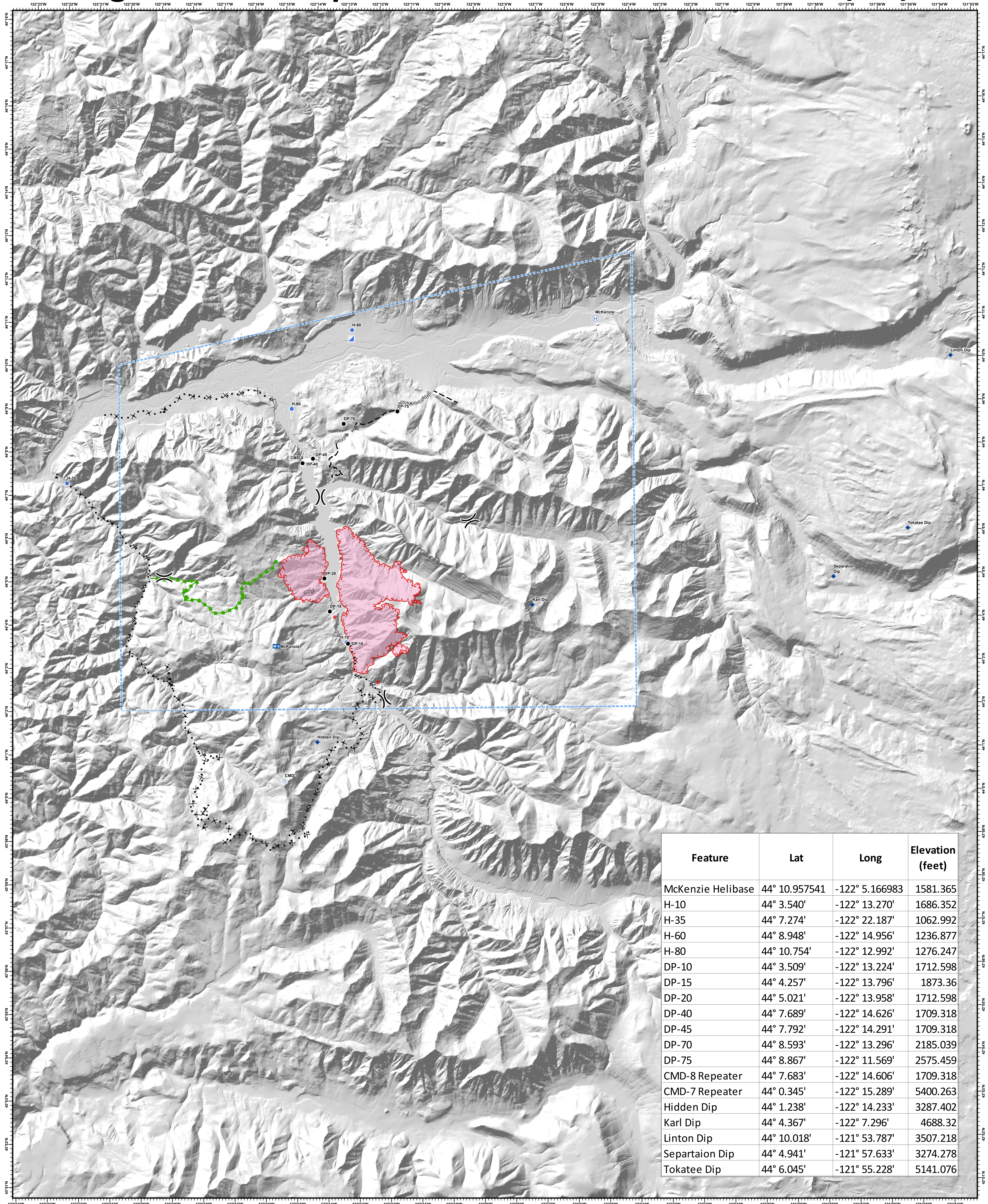
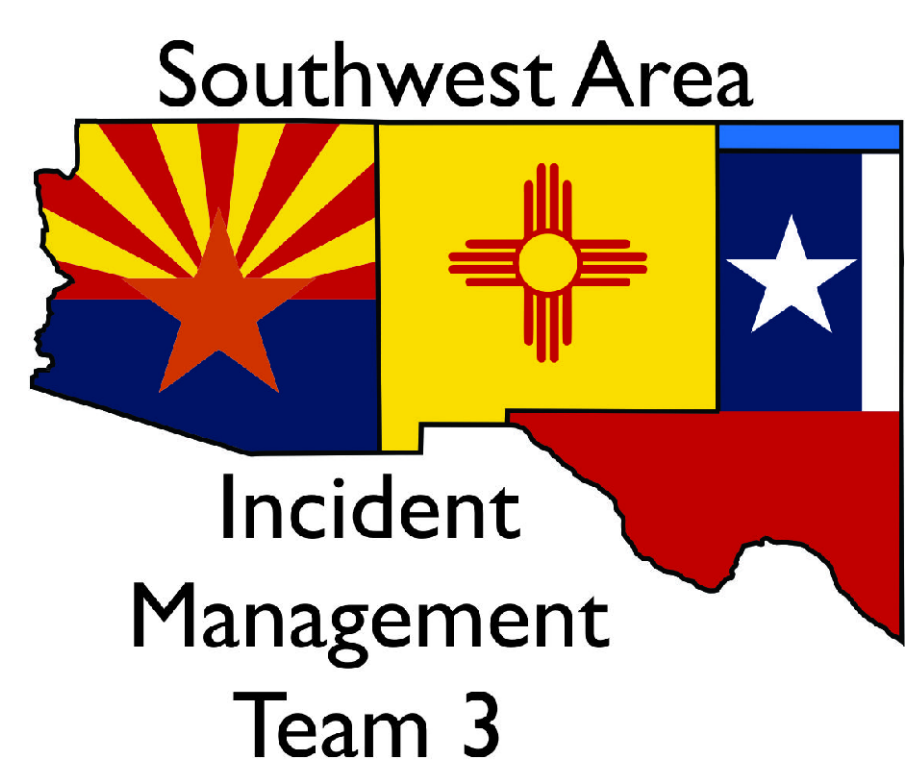


Terwilliger Fire - Air Operations

08/25/2018



Feature	Lat	Long	Elevation (feet)
McKenzie Helibase	44° 10.957541	-122° 5.166983	1581.365
H-10	44° 3.540'	-122° 13.270'	1686.352
H-35	44° 7.274'	-122° 22.187'	1062.992
H-60	44° 8.948'	-122° 14.956'	1236.877
H-80	44° 10.754'	-122° 12.992'	1276.247
DP-10	44° 3.509'	-122° 13.224'	1712.598
DP-15	44° 4.257'	-122° 13.796'	1873.36
DP-20	44° 5.021'	-122° 13.958'	1712.598
DP-40	44° 7.689'	-122° 14.626'	1709.318
DP-45	44° 7.792'	-122° 14.291'	1709.318
DP-70	44° 8.593'	-122° 13.296'	2185.039
DP-75	44° 8.867'	-122° 11.569'	2575.459
CMD-8 Repeater	44° 7.683'	-122° 14.606'	1709.318
CMD-7 Repeater	44° 0.345'	-122° 15.289'	5400.263
Hidden Dip	44° 1.238'	-122° 14.233'	3287.402
Karl Dip	44° 4.367'	-122° 7.296'	4688.32
Linton Dip	44° 10.018'	-121° 53.787'	3507.218
Separation Dip	44° 4.941'	-121° 57.633'	3274.278
Tokatee Dip	44° 6.045'	-121° 55.228'	5141.076



Terwilliger

OR-WIF-180227

Fire perimeter as of
08/23/2018 2139 hrs
3,759 Acres

NAD83 UTM11N

- ◆ Dip Site
- Drop Point
- Helibase
- Helispot
- Incident Command Post
- ✈ Mobile Weather Unit
- Ⓜ Repeater
- ▲ Value at Risk
-) Division Break
- Uncontrolled Fire Edge
- - - TFR
- x x x x x Completed Dozer Line
- - - Completed Hand Line
- x x x Proposed Dozer Line
- - - Planned Fire Line
- Escape Route
- Wildfire Daily Fire Perimeter

