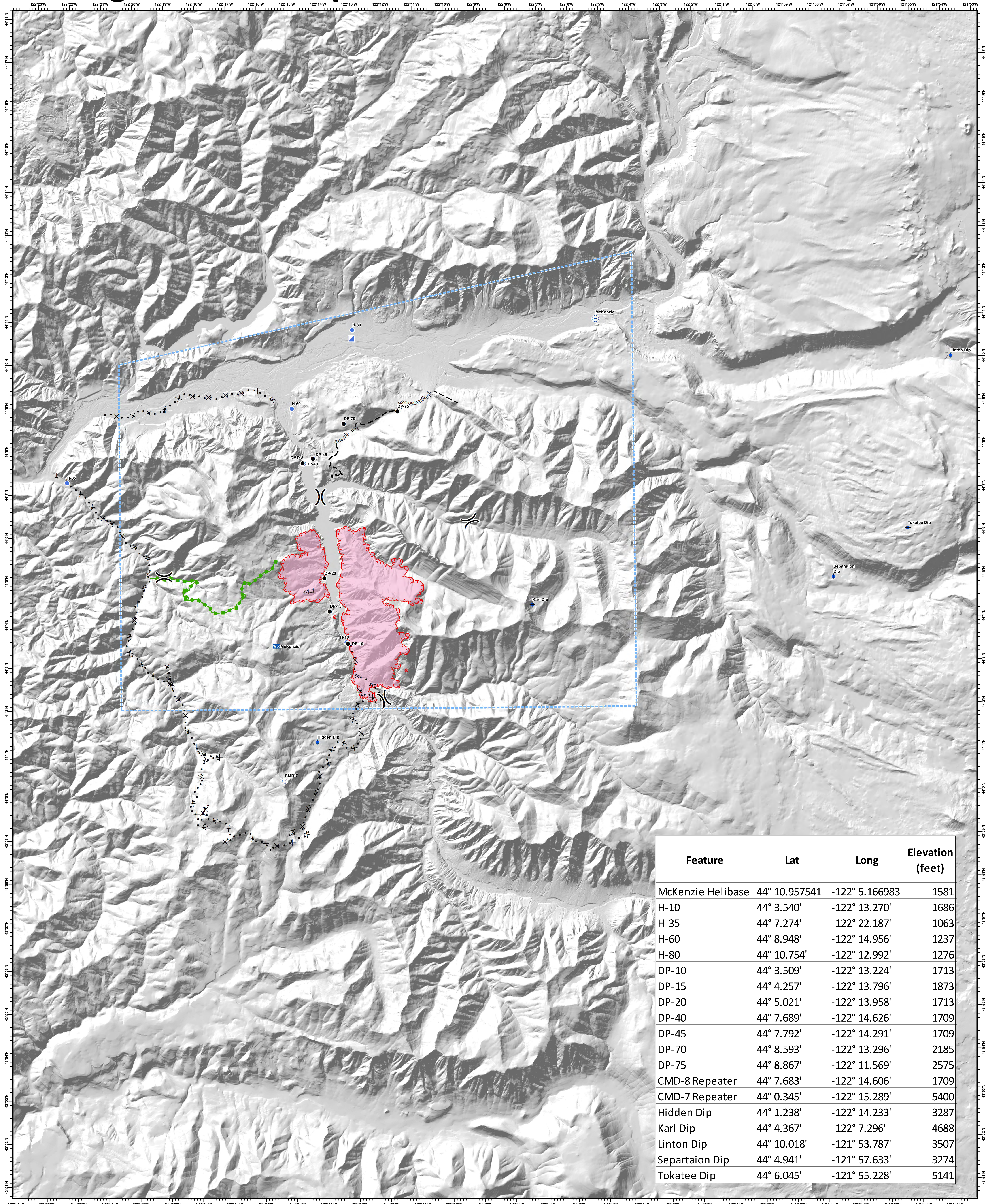


# Terwilliger Fire - Air Operations

# 08/25/2018



Feature	Lat	Long	Elevation (feet)
McKenzie Helibase	44° 10.957541	-122° 5.166983	1581
H-10	44° 3.540'	-122° 13.270'	1686
H-35	44° 7.274'	-122° 22.187'	1063
H-60	44° 8.948'	-122° 14.956'	1237
H-80	44° 10.754'	-122° 12.992'	1276
DP-10	44° 3.509'	-122° 13.224'	1713
DP-15	44° 4.257'	-122° 13.796'	1873
DP-20	44° 5.021'	-122° 13.958'	1713
DP-40	44° 7.689'	-122° 14.626'	1709
DP-45	44° 7.792'	-122° 14.291'	1709
DP-70	44° 8.593'	-122° 13.296'	2185
DP-75	44° 8.867'	-122° 11.569'	2575
CMD-8 Repeater	44° 7.683'	-122° 14.606'	1709
CMD-7 Repeater	44° 0.345'	-122° 15.289'	5400
Hidden Dip	44° 1.238'	-122° 14.233'	3287
Karl Dip	44° 4.367'	-122° 7.296'	4688
Linton Dip	44° 10.018'	-121° 53.787'	3507
Separation Dip	44° 4.941'	-121° 57.633'	3274
Tokatee Dip	44° 6.045'	-121° 55.228'	5141



## Terwilliger

OR-WIF-180227

Fire perimeter as of  
08/25/2018 0130 hrs  
4,721 Acres

NAD83 UTM11N

- ◆ Dip Site
- Drop Point
- Helibase
- Helispot
- Incident Command Post
- ⊠ Mobile Weather Unit
- ⊙ Repeater
- ⚠ Value at Risk
- ) Division Break
- Uncontrolled Fire Edge
- - - TFR
- ⋯ Completed Dozer Line
- · - · Completed Hand Line
- × · × · Proposed Dozer Line
- - - Planned Fire Line
- - - Escape Route
- Wildfire Daily Fire Perimeter

