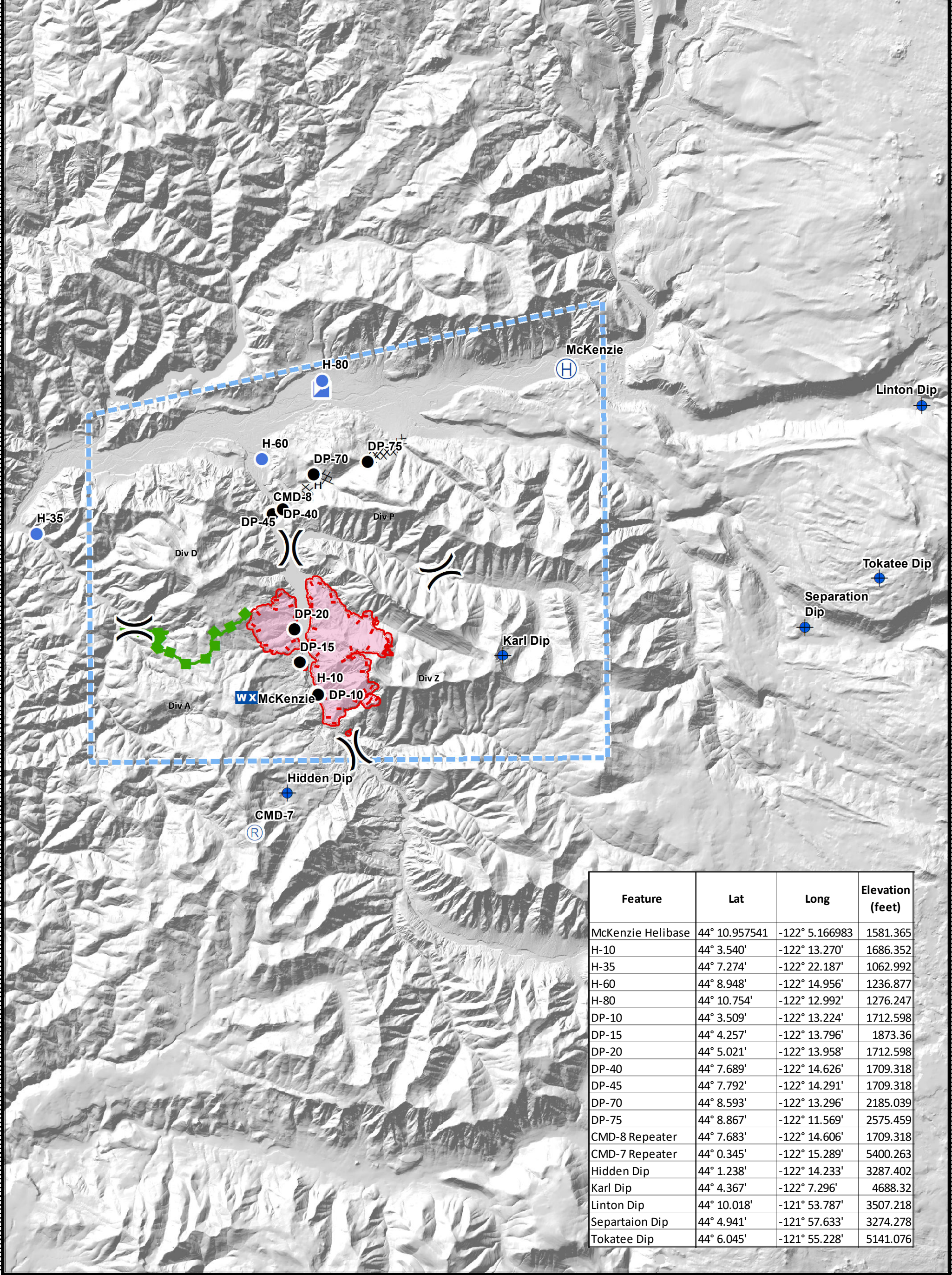


Terwilliger Fire - Pilot Map

08/25/2018

122°23'W 122°21'W 122°19'W 122°17'W 122°15'W 122°13'W 122°11'W 122°9'W 122°7'W 122°5'W 122°3'W 122°1'W 121°59'W 121°57'W 121°55'W 121°53'W



Feature	Lat	Long	Elevation (feet)
McKenzie Helibase	44° 10.957541	-122° 5.166983	1581.365
H-10	44° 3.540'	-122° 13.270'	1686.352
H-35	44° 7.274'	-122° 22.187'	1062.992
H-60	44° 8.948'	-122° 14.956'	1236.877
H-80	44° 10.754'	-122° 12.992'	1276.247
DP-10	44° 3.509'	-122° 13.224'	1712.598
DP-15	44° 4.257'	-122° 13.796'	1873.36
DP-20	44° 5.021'	-122° 13.958'	1712.598
DP-40	44° 7.689'	-122° 14.626'	1709.318
DP-45	44° 7.792'	-122° 14.291'	1709.318
DP-70	44° 8.593'	-122° 13.296'	2185.039
DP-75	44° 8.867'	-122° 11.569'	2575.459
CMD-8 Repeater	44° 7.683'	-122° 14.606'	1709.318
CMD-7 Repeater	44° 0.345'	-122° 15.289'	5400.263
Hidden Dip	44° 1.238'	-122° 14.233'	3287.402
Karl Dip	44° 4.367'	-122° 7.296'	4688.32
Linton Dip	44° 10.018'	-121° 53.787'	3507.218
Separation Dip	44° 4.941'	-121° 57.633'	3274.278
Tokatee Dip	44° 6.045'	-121° 55.228'	5141.076

Southwest Area W 122°18'W 122°16'W 122°14'W 122°12'W 122°10'W 122°8'W 122°6'W 122°4'W 122°2'W 122°0'W 121°58'W 121°56'W 121°54'W



Terwilliger
OR-WIF-180227
 Fire perimeter as of
 08/23/2018 2139 hrs
 3,759 Acres
 NAD83 UTM11N

- Dip Site
- Drop Point
- Helibase
- Helispot
- Incident Command Post
- Repeater
- Division Break
- Mobile Weather Unit
- TFR
- Completed Dozer Line
- Completed Hand Line
- Escape Route
- Uncontrolled Fire Edge
- Wildfire Daily Fire Perimeter



0 0.5 1 2 Miles