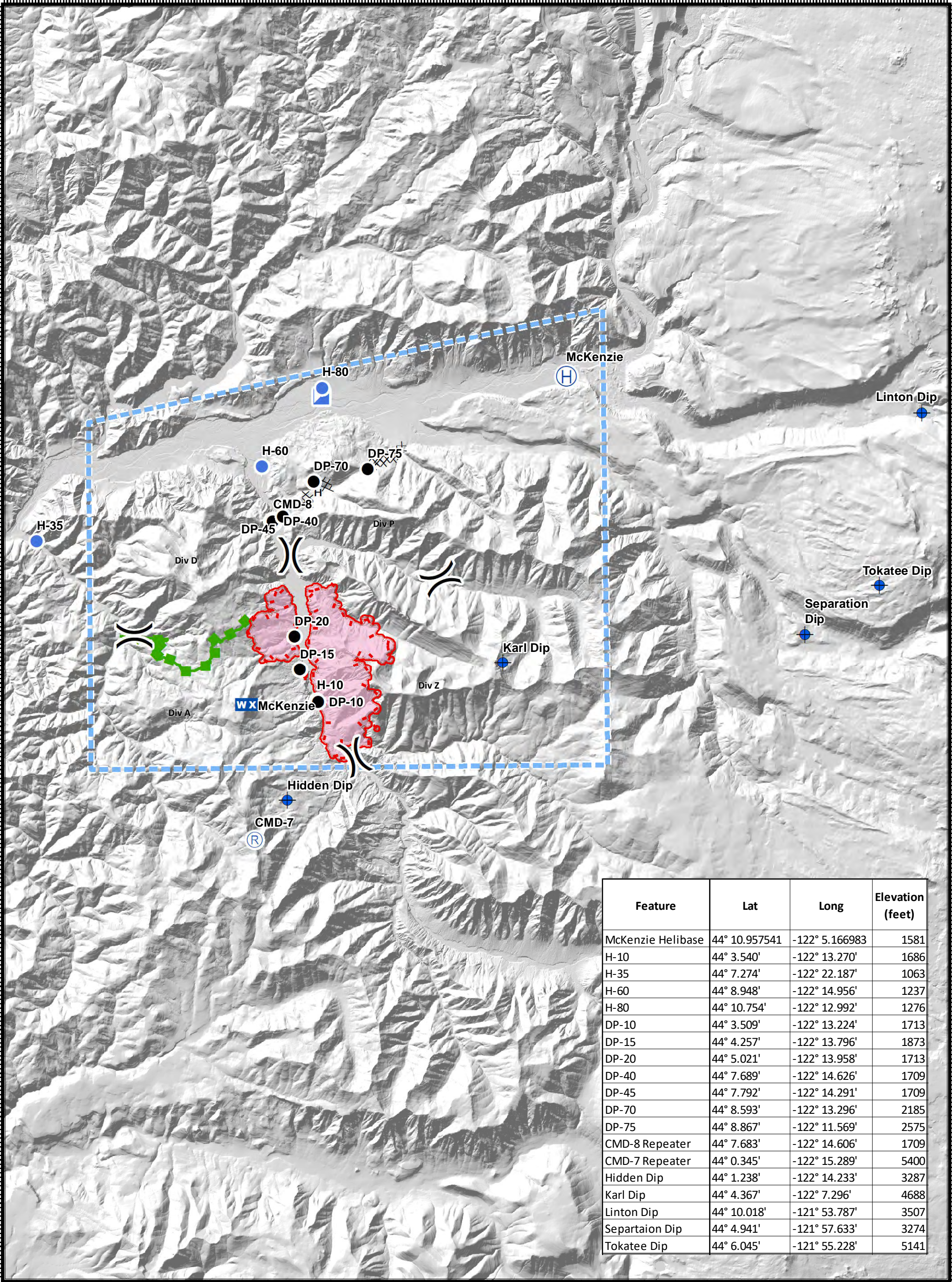


Terwilliger Fire - Pilot Map

08/25/2018

122°23'W 122°21'W 122°19'W 122°17'W 122°15'W 122°13'W 122°11'W 122°9'W 122°7'W 122°5'W 122°3'W 122°1'W 121°59'W 121°57'W 121°55'W 121°53'W



Feature	Lat	Long	Elevation (feet)
McKenzie Helibase	44° 10.957541	-122° 5.166983	1581
H-10	44° 3.540'	-122° 13.270'	1686
H-35	44° 7.274'	-122° 22.187'	1063
H-60	44° 8.948'	-122° 14.956'	1237
H-80	44° 10.754'	-122° 12.992'	1276
DP-10	44° 3.509'	-122° 13.224'	1713
DP-15	44° 4.257'	-122° 13.796'	1873
DP-20	44° 5.021'	-122° 13.958'	1713
DP-40	44° 7.689'	-122° 14.626'	1709
DP-45	44° 7.792'	-122° 14.291'	1709
DP-70	44° 8.593'	-122° 13.296'	2185
DP-75	44° 8.867'	-122° 11.569'	2575
CMD-8 Repeater	44° 7.683'	-122° 14.606'	1709
CMD-7 Repeater	44° 0.345'	-122° 15.289'	5400
Hidden Dip	44° 1.238'	-122° 14.233'	3287
Karl Dip	44° 4.367'	-122° 7.296'	4688
Linton Dip	44° 10.018'	-121° 53.787'	3507
Separation Dip	44° 4.941'	-121° 57.633'	3274
Tokatee Dip	44° 6.045'	-121° 55.228'	5141

Southwest Area W 122°18'W 122°16'W 122°14'W 122°12'W 122°10'W 122°8'W 122°6'W 122°4'W 122°2'W 122°0'W 121°58'W 121°56'W 121°54'W



Terwilliger
OR-WIF-180227
 Fire perimeter as of
 08/25/2018 0130 hrs
 4,721 Acres
 NAD83 UTM11N

- Dip Site
- Drop Point
- Helibase
- Helispot
- Incident Command Post
- Mobile Weather Unit
- Repeater
- Division Break
- Uncontrolled Fire Edge
- TFR
- Completed Dozer Line
- Completed Hand Line
- Escape Route
- Wildfire Daily Fire Perimeter



0 0.5 1 2 Miles