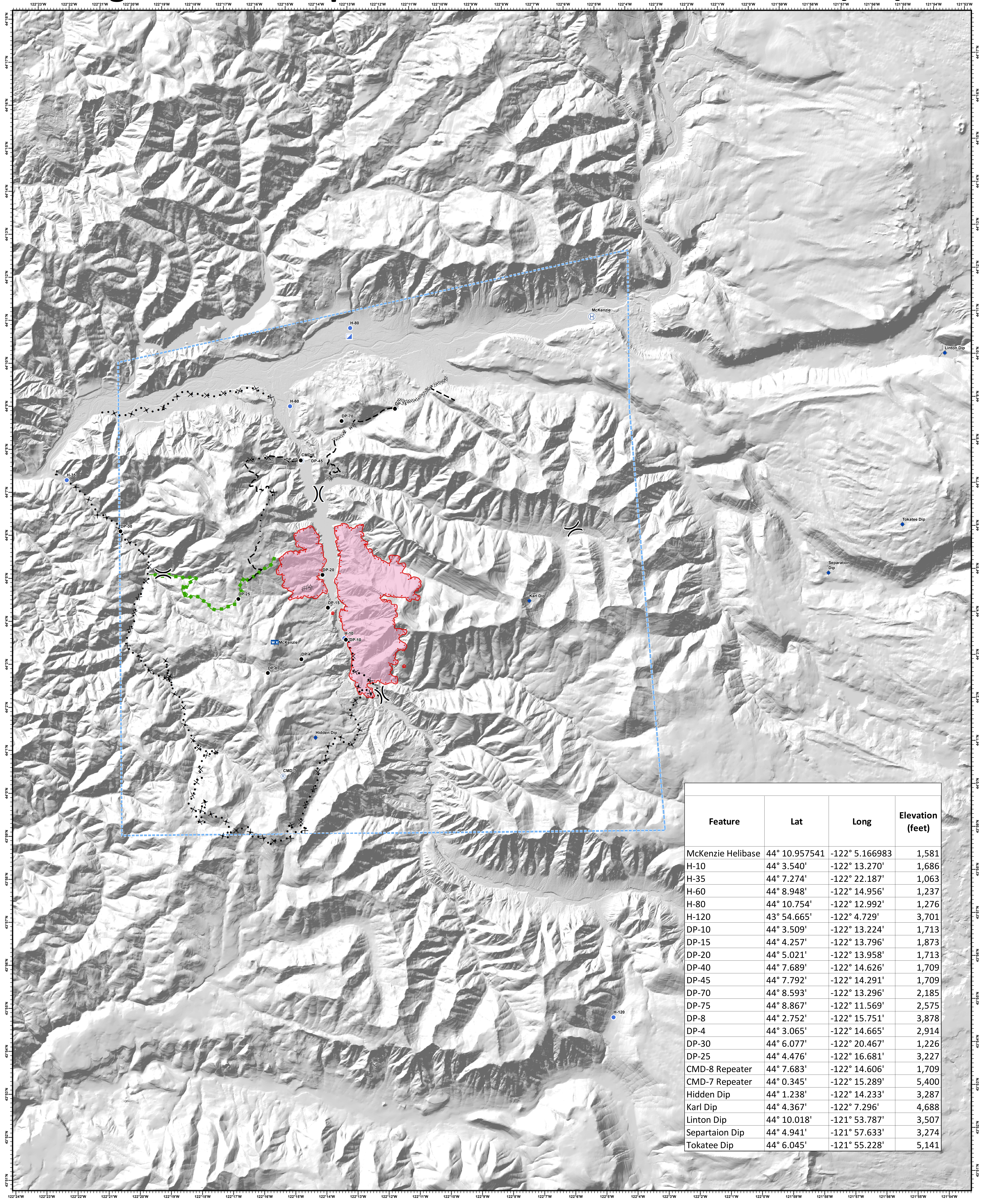


# Terwilliger Fire - Air Operations

# 08/26/2018



Feature	Lat	Long	Elevation (feet)
McKenzie Helibase	44° 10.957541	-122° 5.166983	1,581
H-10	44° 3.540'	-122° 13.270'	1,686
H-35	44° 7.274'	-122° 22.187'	1,063
H-60	44° 8.948'	-122° 14.956'	1,237
H-80	44° 10.754'	-122° 12.992'	1,276
H-120	43° 54.665'	-122° 4.729'	3,701
DP-10	44° 3.509'	-122° 13.224'	1,713
DP-15	44° 4.257'	-122° 13.796'	1,873
DP-20	44° 5.021'	-122° 13.958'	1,713
DP-40	44° 7.689'	-122° 14.626'	1,709
DP-45	44° 7.792'	-122° 14.291'	1,709
DP-70	44° 8.593'	-122° 13.296'	2,185
DP-75	44° 8.867'	-122° 11.569'	2,575
DP-8	44° 2.752'	-122° 15.751'	3,878
DP-4	44° 3.065'	-122° 14.665'	2,914
DP-30	44° 6.077'	-122° 20.467'	1,226
DP-25	44° 4.476'	-122° 16.681'	3,227
CMD-8 Repeater	44° 7.683'	-122° 14.606'	1,709
CMD-7 Repeater	44° 0.345'	-122° 15.289'	5,400
Hidden Dip	44° 1.238'	-122° 14.233'	3,287
Karl Dip	44° 4.367'	-122° 7.296'	4,688
Linton Dip	44° 10.018'	-121° 53.787'	3,507
Separation Dip	44° 4.941'	-121° 57.633'	3,274
Tokattee Dip	44° 6.045'	-121° 55.228'	5,141



**Terwilliger**  
OR-WIF-180227

Fire perimeter as of  
08/25/2018 0130 hrs  
4,721 Acres

NAD83 UTM10N

- ◆ Dip Site
- Drop Point
- Helibase
- Helispot
- Incident Command Post
- ⊠ Mobile Weather Unit
- Ⓜ Repeater
- ⚠ Value at Risk
- ) Division Break
- Uncontrolled Fire Edge
- - - TFR
- ⊘ Completed Dozer Line
- ⊘ Completed Hand Line
- ⊘ Proposed Dozer Line
- ⊘ Planned Fire Line
- Escape Route
- Wildfire Daily Fire Perimeter

