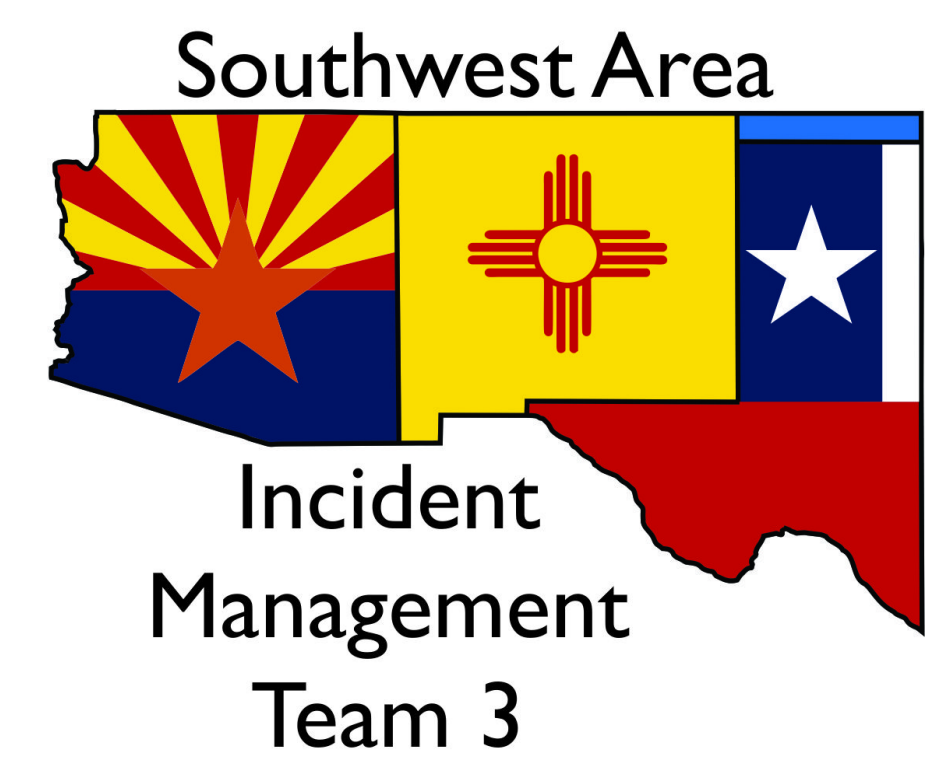
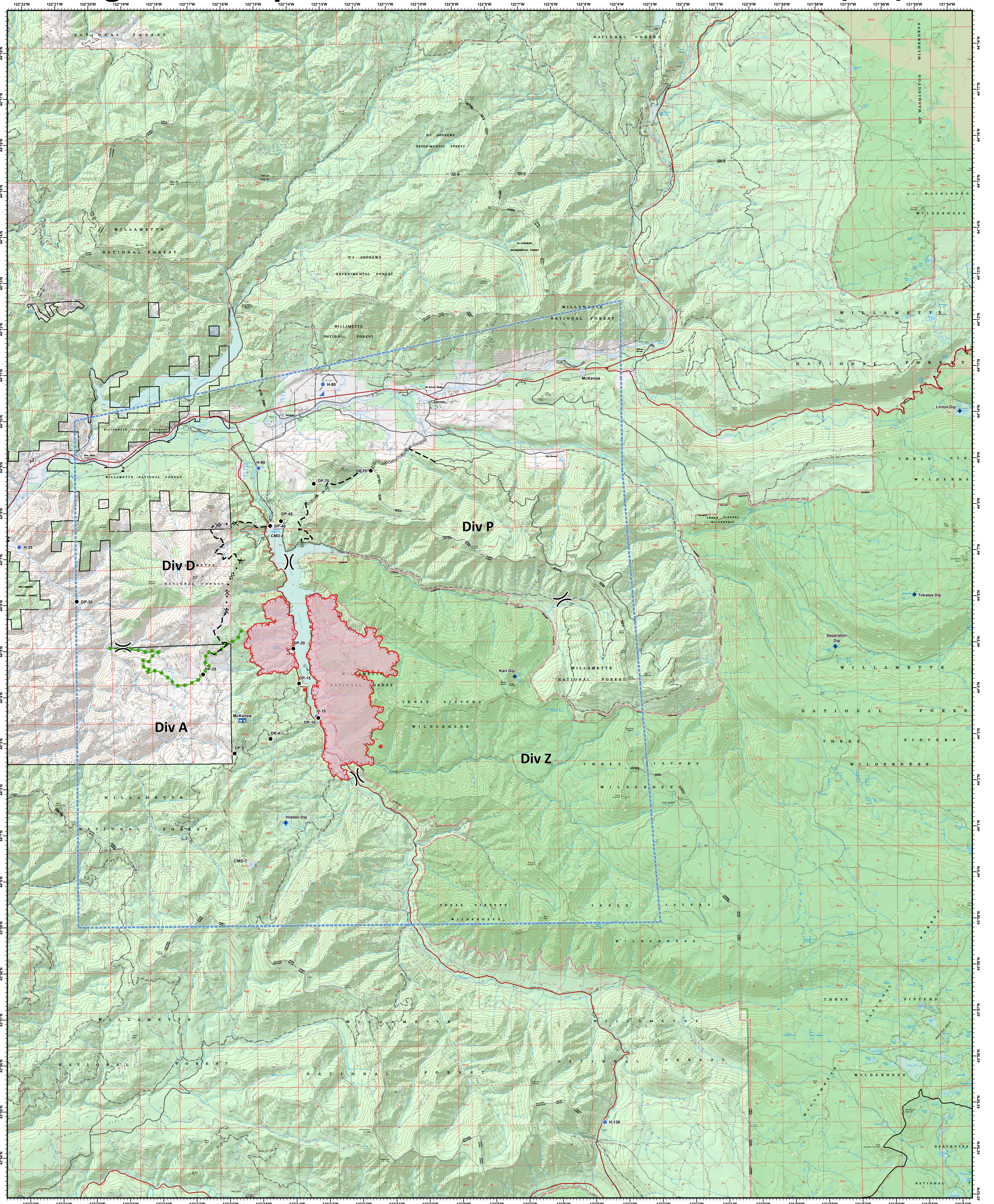


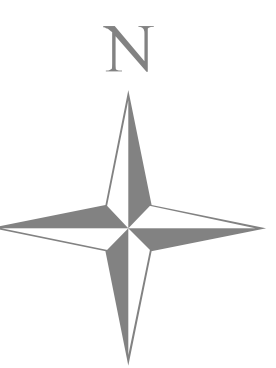
# Terwilliger Fire - Operations

# 08/26/2018



**Terwilliger**  
OR-WIF-180227  
Fire perimeter as of  
08/25/2018 0130 hrs  
4,721 Acres  
NAD83 UTM10N

- |                         |                                 |                                               |                                        |
|-------------------------|---------------------------------|-----------------------------------------------|----------------------------------------|
| ◆ Dip Site              | — Uncontrolled Fire Edge        | — Highway                                     | — Fence                                |
| ● Drop Point            | — Temporary Flight Restriction  | — Road - 4WD                                  | — Park-City, Small County, Mobile Home |
| ⊕ Helibase              | ⊗ Completed Dozer Line          | — Road - Light Duty - Dirt                    | — Power Transmission Line              |
| ● Helispot              | — Completed Hand Line           | — Road - Light Duty - Gravel                  | — County/Alaska Borough                |
| ■ Incident Command Post | — Proposed Dozer Line           | — Road - Light Duty - Paved                   | — Federally Admin - Other              |
| ⊙ Mobile Weather Unit   | — Planned Fire Line             | — Road - Light Duty - Unspecified Composition | — Forest or Grassland                  |
| ⊙ Repeater              | — Escape Route                  | — Road - Unimproved                           | — Incorporated City - Etc              |
| ⚠ Value at Risk         | — Wildfire Daily Fire Perimeter | — Trail                                       | — National Wilderness Area             |
| ⌋ Division Break        | — Wilderness                    | — Trail - Nat Rec/Scenic/Historic             | — National Wildlife Area               |
|                         | — Footbridge                    | — Breakwater                                  | — Ranger District                      |



0 0.75 1.5 3 Miles