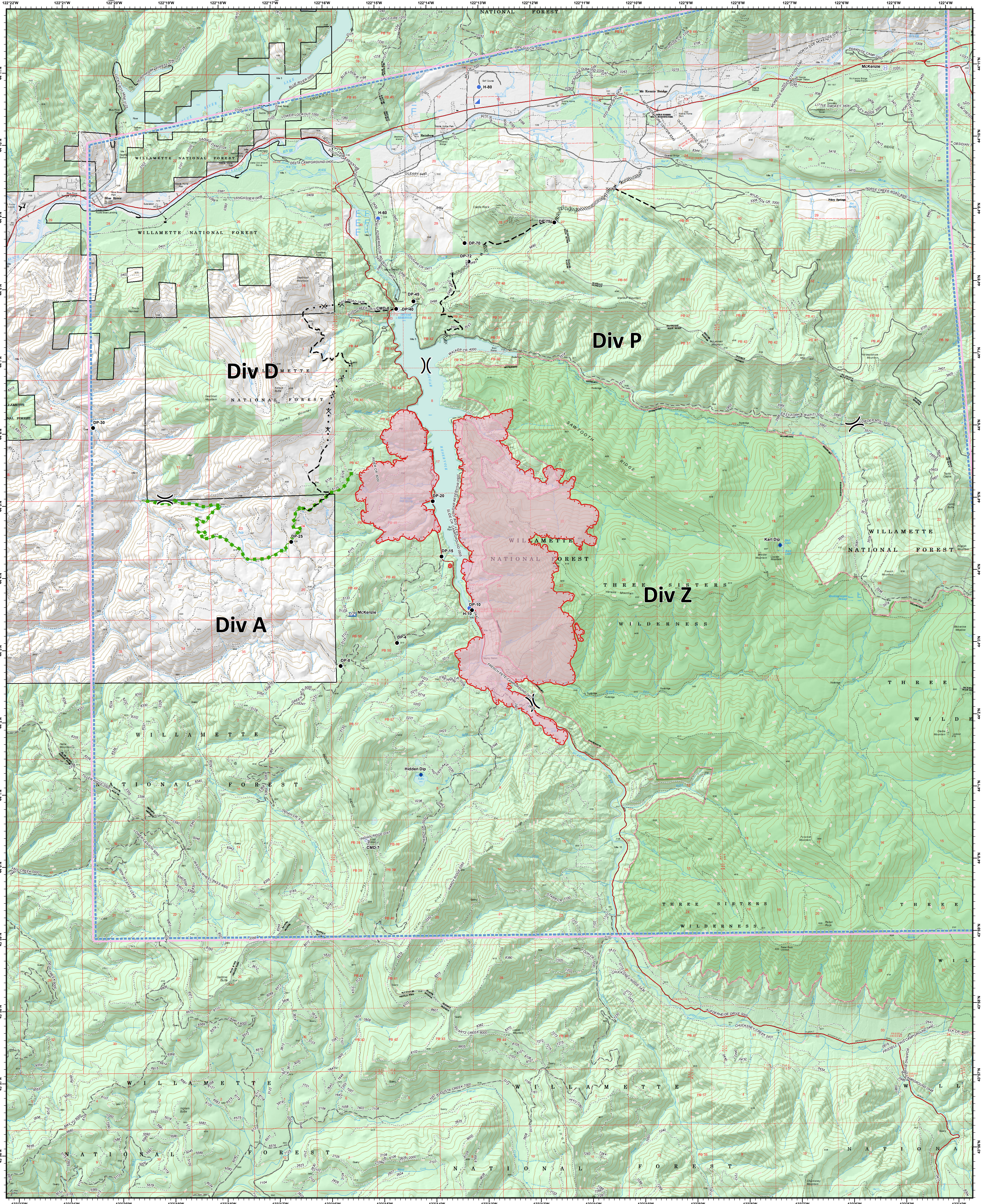


Terwilliger Fire - Operations

08/26/2018



Terwilliger
OR-WIF-180227
 Fire perimeter as of
 08/25/2018 0130 hrs
 4,721 Acres
 NAD83 UTM10N

- | | | | |
|-------------------------|--------------------------------|---|--------------------------------------|
| ◆ Dip Site | ⌘ Division Break | Wildfire Daily Fire Perimeter | Trail |
| ● Drop Point | ⌘ Uncontrolled Fire Edge | Wilderness | Trail - Nat Rec/Scenic/Historic |
| ○ Helibase | ⌘ Temporary Flight Restriction | Footbridge | Fence |
| ● Helispot | ⌘ Completed Dozer Line | Highway | Park-City, Small County, Mobile Home |
| Ⓜ Incident Command Post | ⌘ Completed Hand Line | Road - Light Duty - Dirt | Power Transmission Line |
| Ⓜ Mobile Weather Unit | ⌘ Proposed Dozer Line | Road - Light Duty - Gravel | Forest or Grassland |
| Ⓜ Repeater | ⌘ Planned Fire Line | Road - Light Duty - Paved | Incorporated City - Etc |
| Ⓜ Value at Risk | ⌘ Escape Route | Road - Light Duty - Unspecified Composition | National Wilderness Area |
| | | Road - Unimproved | Ranger District |

