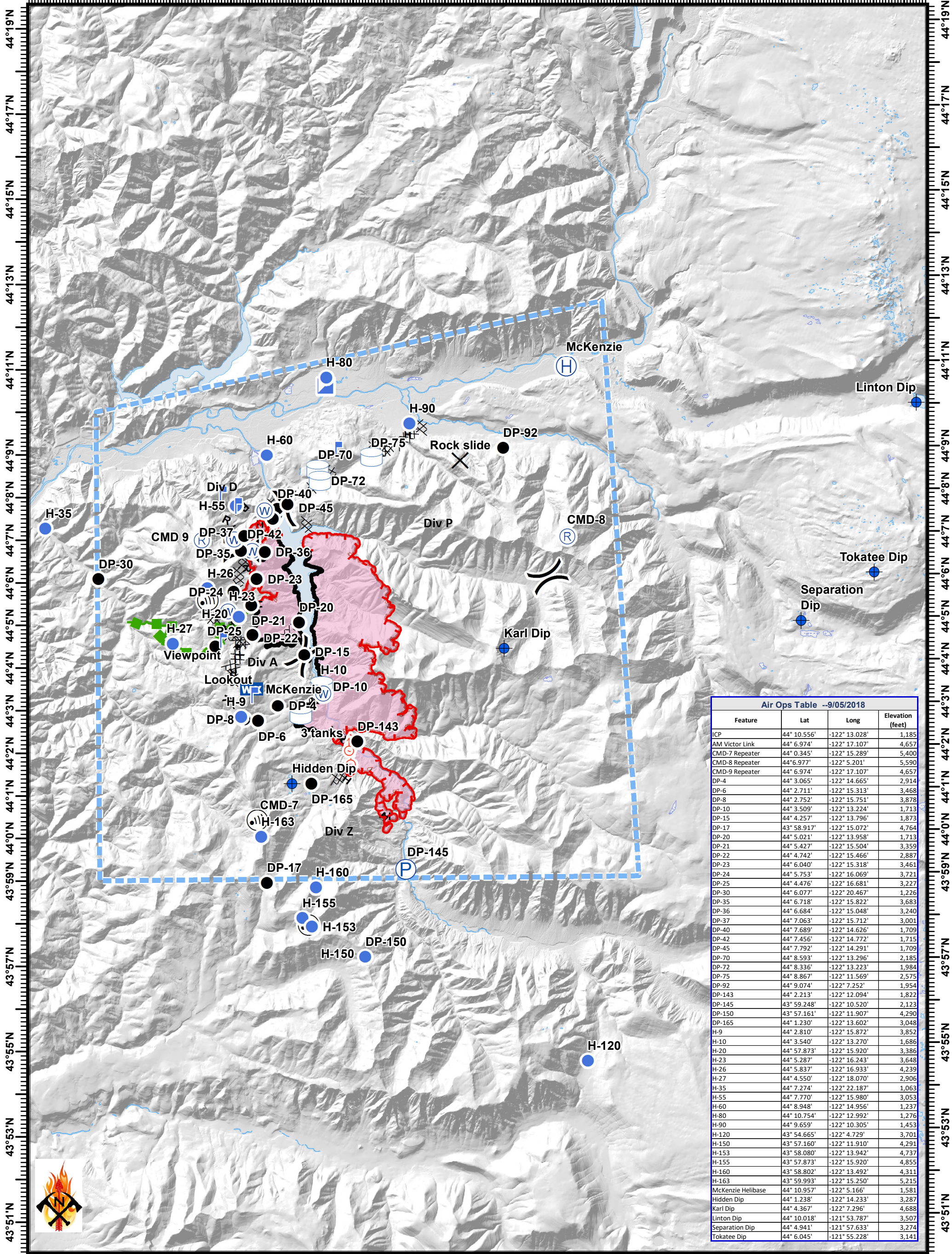


# Terwilliger Fire - Pilot Map

09/05/2018

122°22'W 122°20'W 122°18'W 122°16'W 122°14'W 122°12'W 122°10'W 122°8'W 122°6'W 122°4'W 122°2'W 122°0'W 121°58'W 121°56'W 121°54'W



| Air Ops Table --9/05/2018 |             |               |                  |
|---------------------------|-------------|---------------|------------------|
| Feature                   | Lat         | Long          | Elevation (feet) |
| ICP                       | 44° 10.556' | -122° 13.028' | 1,185            |
| AM Victor Link            | 44° 6.974'  | -122° 17.107' | 4,657            |
| CMD-7 Repeater            | 44° 0.345'  | -122° 15.289' | 5,400            |
| CMD-8 Repeater            | 44° 6.977'  | -122° 5.201'  | 5,590            |
| CMD-9 Repeater            | 44° 6.974'  | -122° 17.107' | 4,657            |
| DP-4                      | 44° 3.065'  | -122° 14.665' | 2,914            |
| DP-6                      | 44° 2.711'  | -122° 15.313' | 3,468            |
| DP-8                      | 44° 2.752'  | -122° 15.751' | 3,878            |
| DP-10                     | 44° 3.509'  | -122° 13.224' | 1,713            |
| DP-15                     | 44° 4.257'  | -122° 13.796' | 1,873            |
| DP-17                     | 43° 58.917' | -122° 15.072' | 4,764            |
| DP-20                     | 44° 5.021'  | -122° 13.958' | 1,713            |
| DP-21                     | 44° 5.427'  | -122° 15.504' | 3,359            |
| DP-22                     | 44° 4.742'  | -122° 15.466' | 2,887            |
| DP-23                     | 44° 6.040'  | -122° 15.318' | 3,461            |
| DP-24                     | 44° 5.753'  | -122° 16.069' | 3,721            |
| DP-25                     | 44° 4.476'  | -122° 16.681' | 3,227            |
| DP-30                     | 44° 6.077'  | -122° 20.467' | 1,226            |
| DP-35                     | 44° 6.718'  | -122° 15.822' | 3,683            |
| DP-36                     | 44° 6.684'  | -122° 15.048' | 3,240            |
| DP-37                     | 44° 7.063'  | -122° 15.712' | 3,001            |
| DP-40                     | 44° 7.689'  | -122° 14.626' | 1,709            |
| DP-42                     | 44° 7.456'  | -122° 14.772' | 1,715            |
| DP-45                     | 44° 7.792'  | -122° 14.291' | 1,709            |
| DP-70                     | 44° 8.593'  | -122° 13.296' | 2,185            |
| DP-72                     | 44° 8.336'  | -122° 13.223' | 1,984            |
| DP-75                     | 44° 8.867'  | -122° 11.569' | 2,575            |
| DP-92                     | 44° 9.074'  | -122° 7.252'  | 1,954            |
| DP-143                    | 44° 2.213'  | -122° 12.094' | 1,822            |
| DP-145                    | 43° 59.248' | -122° 10.520' | 2,123            |
| DP-150                    | 43° 57.161' | -122° 11.907' | 4,290            |
| DP-165                    | 44° 1.230'  | -122° 13.602' | 3,048            |
| H-9                       | 44° 2.810'  | -122° 15.872' | 3,852            |
| H-10                      | 44° 3.540'  | -122° 13.270' | 1,686            |
| H-20                      | 44° 57.873' | -122° 15.920' | 3,386            |
| H-23                      | 44° 5.287'  | -122° 16.243' | 3,648            |
| H-26                      | 44° 5.837'  | -122° 16.933' | 4,239            |
| H-27                      | 44° 4.550'  | -122° 18.070' | 2,906            |
| H-35                      | 44° 7.274'  | -122° 22.187' | 1,063            |
| H-55                      | 44° 7.770'  | -122° 15.980' | 3,053            |
| H-60                      | 44° 8.948'  | -122° 14.956' | 1,237            |
| H-80                      | 44° 10.754' | -122° 12.992' | 1,276            |
| H-90                      | 44° 9.659'  | -122° 10.305' | 1,453            |
| H-120                     | 43° 54.665' | -122° 4.729'  | 3,701            |
| H-150                     | 43° 57.160' | -122° 11.910' | 4,291            |
| H-153                     | 43° 58.080' | -122° 13.942' | 4,737            |
| H-155                     | 43° 57.873' | -122° 15.920' | 4,855            |
| H-160                     | 43° 58.802' | -122° 13.492' | 4,311            |
| H-163                     | 43° 59.993' | -122° 15.250' | 5,215            |
| McKenzie Helibase         | 44° 10.957' | -122° 5.166'  | 1,581            |
| Hidden Dip                | 44° 1.238'  | -122° 14.233' | 3,287            |
| Karl Dip                  | 44° 4.367'  | -122° 7.296'  | 4,688            |
| Linton Dip                | 44° 10.018' | -121° 53.787' | 3,507            |
| Separation Dip            | 44° 4.941'  | -121° 57.633' | 3,274            |
| Tokatee Dip               | 44° 6.045'  | -121° 55.228' | 3,141            |



**Terwilliger**  
**OR-WIF-180227**  
 Fire perimeter as of  
 09/03/2018 2252 hrs  
 9158 Acres  
 0 0.5 1 2 3  
 Miles

- Closure
- ICP
- Spot Fire
- Uncontrolled Fire Edge
- Dip Site
- Internet Access
- Water Source
- TFR
- Drop Point
- Lookout
- Water Tank
- Completed Line
- Helibase
- Mobile Wx Unit
- Division Break
- Planned Fire Line
- Helispot
- Repeater
- Completed Dozer Line
- Escape Route
- Completed Hand Line
- Fire Perimeter



NAD83 UTM10N