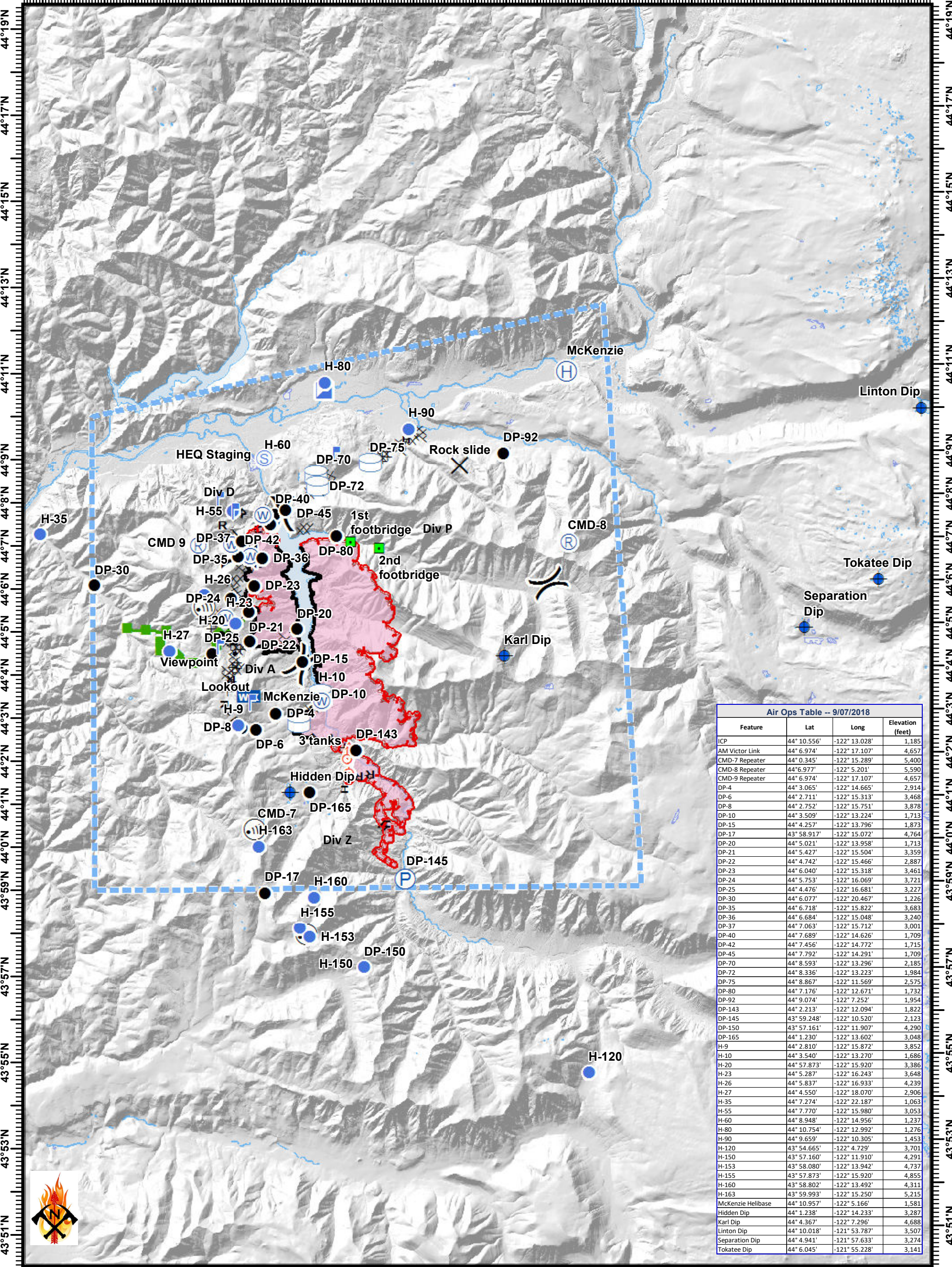


Terwilliger Fire - Pilot Map

09/06/2018

122°22'W 122°20'W 122°18'W 122°16'W 122°14'W 122°12'W 122°10'W 122°8'W 122°6'W 122°4'W 122°2'W 122°0'W 121°58'W 121°56'W 121°54'W



Air Ops Table -- 9/07/2018

Feature	Lat	Long	Elevation (feet)
ICP	44° 10.556'	-122° 13.028'	1,185
AM Victor Link	44° 6.974'	-122° 17.107'	4,657
CMD-7 Repeater	44° 0.345'	-122° 15.289'	5,400
CMD-8 Repeater	44° 6.977'	-122° 5.201'	5,590
CMD-9 Repeater	44° 6.974'	-122° 17.107'	4,657
DP-4	44° 3.065'	-122° 14.665'	2,914
DP-6	44° 2.711'	-122° 15.313'	3,468
DP-8	44° 2.752'	-122° 15.751'	3,878
DP-10	44° 3.509'	-122° 13.224'	1,713
DP-15	44° 4.257'	-122° 13.796'	1,873
DP-17	43° 58.917'	-122° 15.072'	4,764
DP-20	44° 5.021'	-122° 13.958'	1,713
DP-21	44° 5.427'	-122° 15.504'	3,359
DP-22	44° 4.742'	-122° 15.466'	2,887
DP-23	44° 6.040'	-122° 15.318'	3,461
DP-24	44° 5.753'	-122° 16.069'	3,721
DP-25	44° 4.476'	-122° 16.681'	3,227
DP-30	44° 6.077'	-122° 20.467'	1,226
DP-35	44° 6.718'	-122° 15.822'	3,683
DP-36	44° 6.684'	-122° 15.048'	3,240
DP-37	44° 7.063'	-122° 15.712'	3,001
DP-40	44° 7.689'	-122° 14.626'	1,709
DP-42	44° 7.456'	-122° 14.772'	1,715
DP-45	44° 7.792'	-122° 14.291'	1,709
DP-70	44° 8.593'	-122° 13.296'	2,185
DP-72	44° 8.336'	-122° 13.223'	1,984
DP-75	44° 8.867'	-122° 11.569'	2,575
DP-80	44° 7.176'	-122° 12.671'	1,732
DP-92	44° 9.074'	-122° 7.252'	1,954
DP-143	44° 2.213'	-122° 12.094'	1,822
DP-145	43° 59.248'	-122° 10.520'	2,123
DP-150	43° 57.161'	-122° 11.907'	4,290
DP-165	44° 1.230'	-122° 13.602'	3,048
H-9	44° 2.810'	-122° 15.872'	3,852
H-10	44° 3.540'	-122° 13.270'	1,686
H-20	44° 57.873'	-122° 15.920'	3,386
H-23	44° 5.287'	-122° 16.243'	3,648
H-26	44° 5.837'	-122° 16.933'	4,239
H-27	44° 4.550'	-122° 18.070'	2,906
H-35	44° 7.274'	-122° 22.187'	1,063
H-55	44° 7.770'	-122° 15.980'	3,053
H-60	44° 8.948'	-122° 14.956'	1,237
H-80	44° 10.754'	-122° 12.992'	1,276
H-90	44° 9.659'	-122° 10.305'	1,453
H-120	43° 54.665'	-122° 4.729'	3,701
H-150	43° 57.160'	-122° 11.910'	4,291
H-153	43° 58.080'	-122° 13.942'	4,737
H-155	43° 57.873'	-122° 15.920'	4,855
H-160	43° 58.802'	-122° 13.492'	4,311
H-163	43° 59.993'	-122° 15.250'	5,215
McKenzie Helibase	44° 10.957'	-122° 5.166'	1,581
Hidden Dip	44° 1.238'	-122° 14.233'	3,287
Karl Dip	44° 4.367'	-122° 7.296'	4,688
Linton Dip	44° 10.018'	-121° 53.787'	3,507
Separation Dip	44° 4.941'	-121° 57.633'	3,274
Tokatee Dip	44° 6.045'	-121° 55.228'	3,141



Terwilliger
OR-WIF-180227
 Fire perimeter as of
 09/04/2018 2152 hrs
 9545 Acres

0 0.5 1 2 3
 Miles

- ✕ Closure
- 📶 Internet Access
- 🔥 Spot Fire
- 🔴 Uncontrolled Fire Edge
- 📍 Dip Site
- 📡 Lookout
- 🌊 Water Source
- 🔵 TFR
- Drop Point
- 🚒 Water Tank
- 🚰 Water Tank
- 🔵 Completed Line
- 🔵 Completed Burnout
- 📍 Helibase
- 🚧 Mobile Wx Unit
- 🔗 Division Break
- 🔗 Completed Dozer Line
- 🔗 Planned Fire Line
- 📍 Helispot
- 📡 Repeater
- 🔗 Completed Hand Line
- 🔗 Fire Perimeter



NAD83 UTM10N