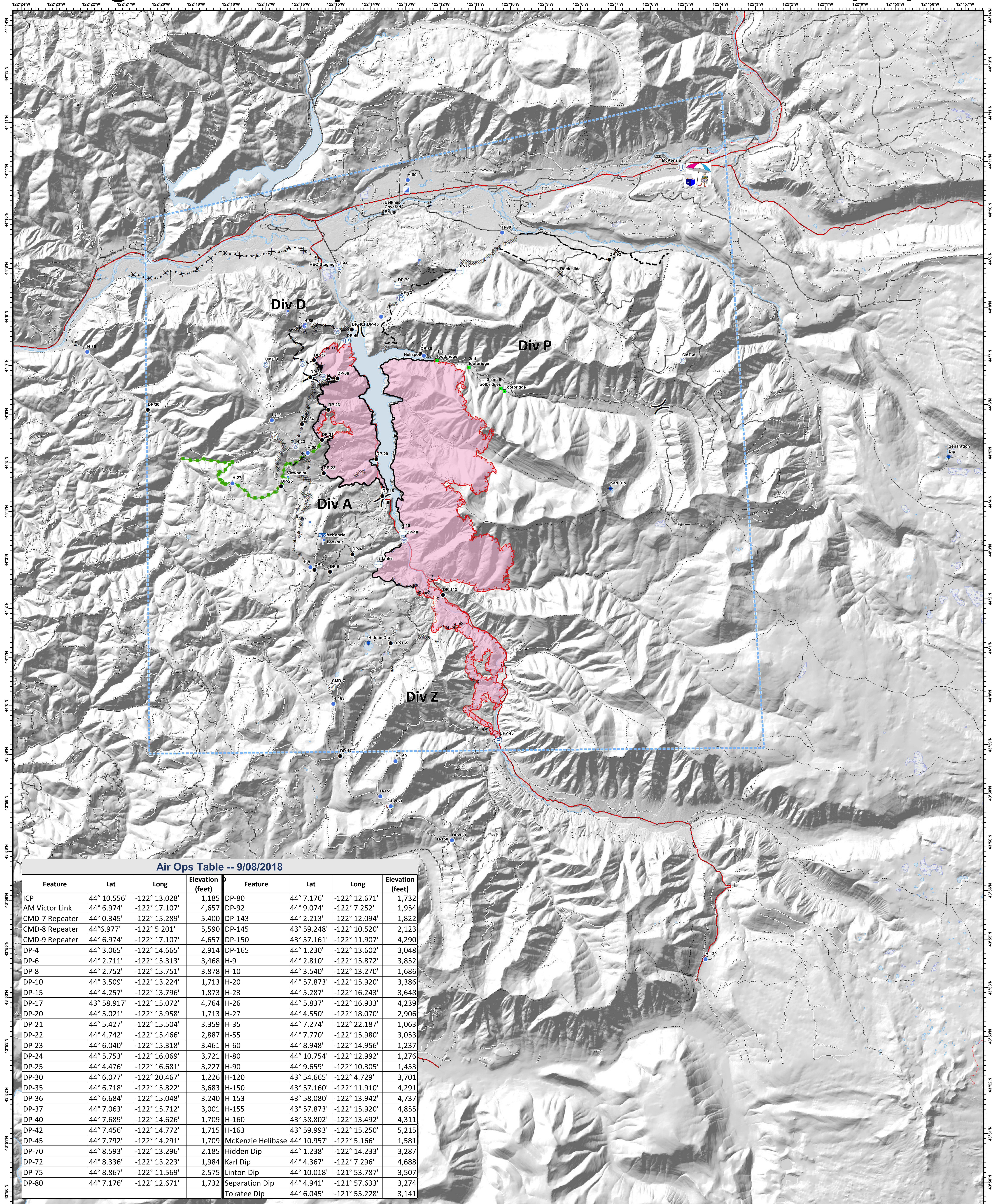



Terwilliger Fire - Air Operations

9/08/2018



Air Ops Table -- 9/08/2018


Feature	Lat	Long	Elevation (feet)	Feature	Lat	Long	Elevation (feet)
ICP	44° 10.556'	-122° 13.028'	1,185	DP-80	44° 7.176'	-122° 12.671'	1,732
AM Victor Link	44° 6.974'	-122° 17.107'	4,657	DP-92	44° 9.074'	-122° 7.252'	1,954
CMD-7 Repeater	44° 0.345'	-122° 15.289'	5,400	DP-143	44° 2.213'	-122° 12.094'	1,822
CMD-8 Repeater	44° 6.977'	-122° 5.201'	5,590	DP-145	43° 59.248'	-122° 10.520'	2,123
CMD-9 Repeater	44° 6.974'	-122° 17.107'	4,657	DP-150	43° 57.161'	-122° 11.907'	4,290
DP-4	44° 3.065'	-122° 14.665'	2,914	DP-165	44° 1.230'	-122° 13.602'	3,048
DP-6	44° 2.711'	-122° 15.313'	3,468	H-9	44° 2.810'	-122° 15.872'	3,852
DP-8	44° 2.752'	-122° 15.751'	3,878	H-10	44° 3.540'	-122° 13.270'	1,686
DP-10	44° 3.509'	-122° 13.224'	1,713	H-20	44° 57.873'	-122° 15.920'	3,386
DP-15	44° 4.257'	-122° 13.796'	1,873	H-23	44° 5.287'	-122° 16.243'	3,648
DP-17	43° 58.917'	-122° 15.072'	4,764	H-26	44° 5.837'	-122° 16.933'	4,239
DP-20	44° 5.021'	-122° 13.958'	1,713	H-27	44° 4.550'	-122° 18.070'	2,906
DP-21	44° 5.427'	-122° 15.504'	3,359	H-35	44° 7.274'	-122° 22.187'	1,063
DP-22	44° 4.742'	-122° 15.466'	2,887	H-55	44° 7.770'	-122° 15.980'	3,053
DP-23	44° 6.040'	-122° 15.318'	3,461	H-60	44° 8.948'	-122° 14.956'	1,237
DP-24	44° 5.753'	-122° 16.069'	3,721	H-80	44° 10.754'	-122° 12.992'	1,276
DP-25	44° 4.476'	-122° 16.681'	3,227	H-90	44° 9.659'	-122° 10.305'	1,453
DP-30	44° 6.077'	-122° 20.467'	1,226	H-120	43° 54.665'	-122° 4.729'	3,701
DP-35	44° 6.718'	-122° 15.822'	3,683	H-150	43° 57.160'	-122° 11.910'	4,291
DP-36	44° 6.684'	-122° 15.048'	3,240	H-153	43° 58.080'	-122° 13.942'	4,737
DP-37	44° 7.063'	-122° 15.712'	3,001	H-155	43° 57.873'	-122° 15.920'	4,855
DP-40	44° 7.689'	-122° 14.626'	1,709	H-160	43° 58.802'	-122° 13.492'	4,311
DP-42	44° 7.456'	-122° 14.772'	1,715	H-163	43° 59.993'	-122° 15.250'	5,215
DP-45	44° 7.792'	-122° 14.291'	1,709	McKenzie Helibase	44° 10.957'	-122° 5.166'	1,581
DP-70	44° 8.593'	-122° 13.296'	2,185	Hidden Dip	44° 1.238'	-122° 14.233'	3,287
DP-72	44° 8.336'	-122° 13.223'	1,984	Karl Dip	44° 4.367'	-122° 7.296'	4,688
DP-75	44° 8.867'	-122° 11.569'	2,575	Linton Dip	44° 10.018'	-121° 53.787'	3,507
DP-80	44° 7.176'	-122° 12.671'	1,732	Separation Dip	44° 4.941'	-121° 57.633'	3,274
				Tokatee Dip	44° 6.045'	-121° 55.228'	3,141



Terwilliger
OR-WIF-180227
Fire perimeter as of
09/07/2018 1052 hrs
10,150 Acres

Team 4

● Dip Site	○ Repeater	— Uncontrolled Fire Edge	— Completed Burnout
● Drop Point	○ Spot Fire	— Completed Line	× × × Proposed Dozer Line
⊕ Helibase	⊕ Staging Area	⊗ Completed Dozer Line	- - - Planned Fire Line
● Helispot	⊕ Water Source	⊗ Completed Hand Line	— Escape Route
⊕ Incident Command Post	⊕ Water Tank	⊗ Value at Risk	⊕ Wildfire Daily Fire Perimeter
⊕ Internet Access	⊕ Landmark	⊗ Division Break	
⊕ Lookout	⊕ Mobile Weather Unit		



Miles
NAD83 UTM10N

