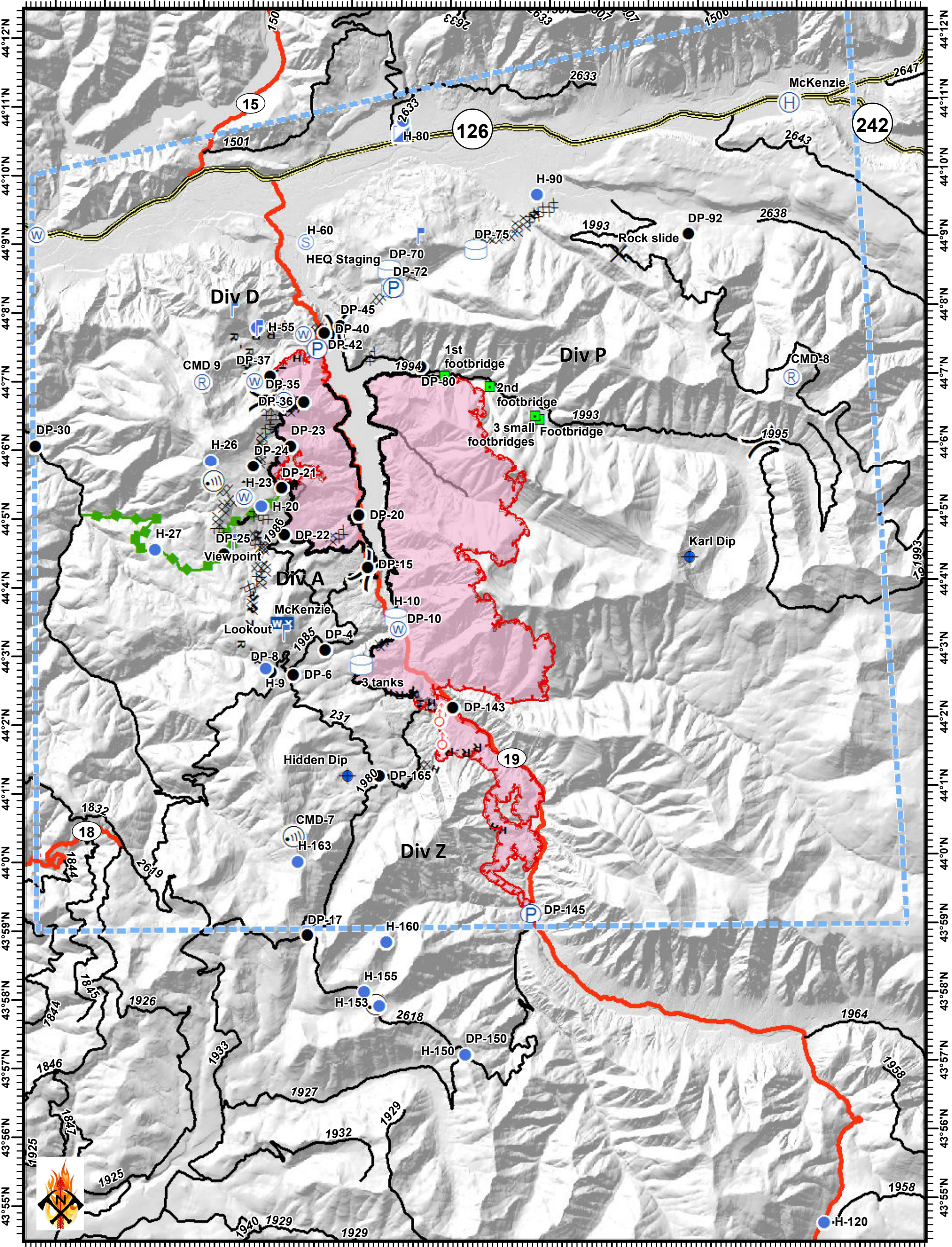



Terwilliger Fire - Pilot Map

09/08/2018

122°20'W 122°18'W 122°16'W 122°14'W 122°12'W 122°10'W 122°9'W 122°8'W 122°7'W 122°6'W 122°5'W 122°4'W 122°3'W





Terwilliger
OR-WIF-180227
Fire perimeter as of
09/07/2018 1052 hrs
10,150 Acres

Team 4

0 0.5 1 2 3
Miles
NAD83 UTM10N

✕ Closure	📶 Internet Access	🔥 Spot Fire	🔴 Uncontrolled Fire Edge	🛤️ R - Road as Completed Line
📍 Dip Site	📍 Landmark	📍 Staging Area	🔵 TFR	🔴 Completed Burnout
● Drop Point	📍 Lookout	📍 Mobile Weather Unit	🟢 Completed Line	🟢 Planned Fire Line
🚁 Helibase	📍 WX Mobile Weather Unit	📍 Pump	🟡 H - Completed Hand Line	🟢 Escape Route
📍 Helispot	📍 Repeater	📍 Division Break	🟡 State Highway	🟡 Fire Perimeter
📍 Incident Command Post			🟡 Arterial Road	🟡 Collector Road

