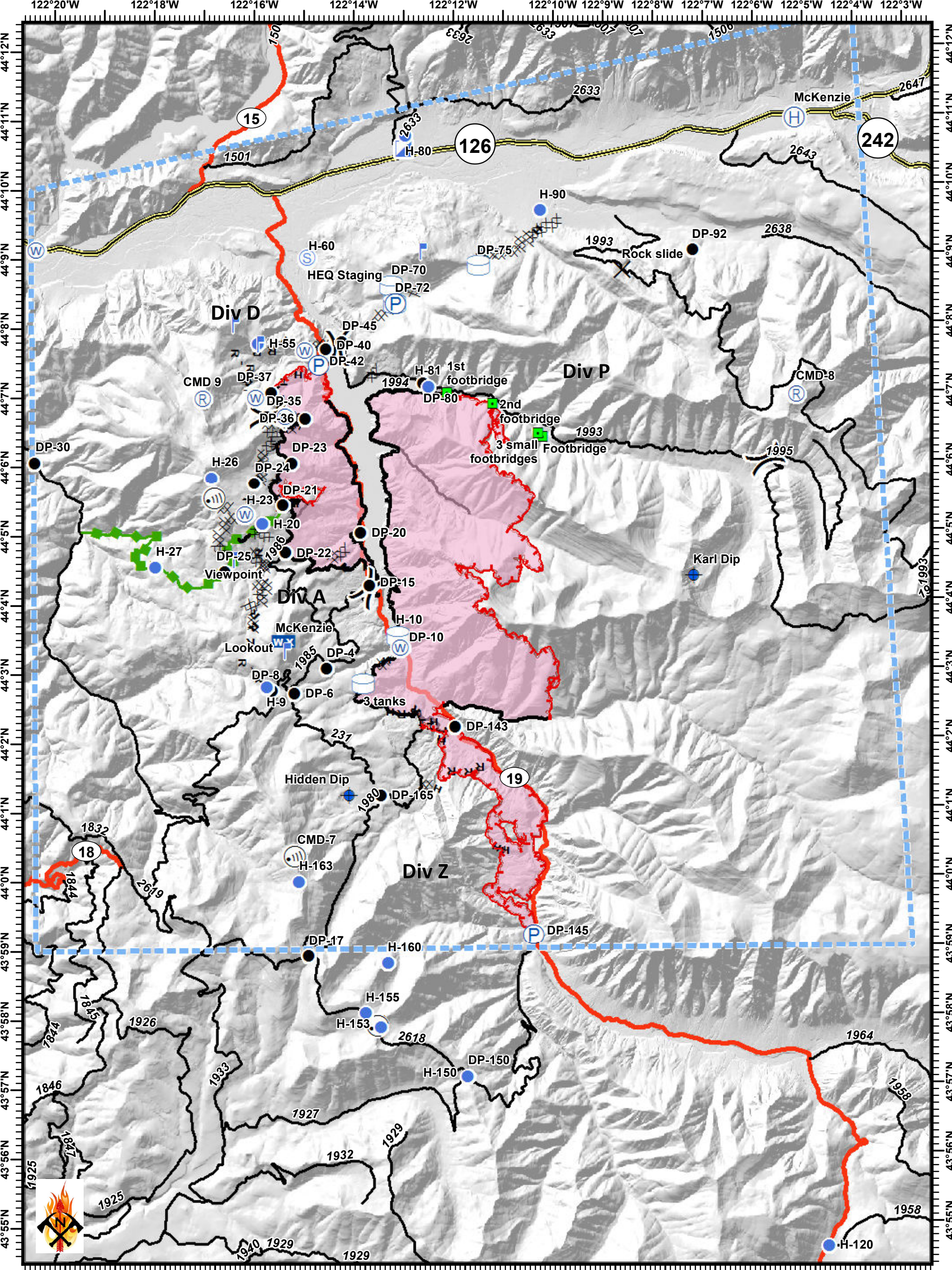
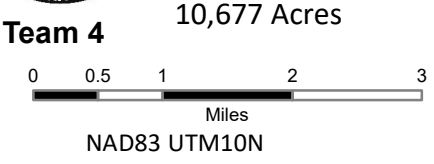


Terwilliger Fire - Pilot Map

09/09/2018



Terwilliger
OR-WIF-180227
 Fire perimeter as of
 09/07/2018 2330 hrs
 10,677 Acres



- | | | | | |
|-------------------------|----------------------------|---------------------------|--------------------------|------------------------------|
| ✕ Closure | 📶 Internet Access | 📍 Staging Area | 🔴 Uncontrolled Fire Edge | Ⓜ R - Road as Completed Line |
| 📍 Dip Site | 📍 Landmark | 📍 Water Source | 🔵 Completed Line | 📍 Completed Burnout |
| ● Drop Point | 📍 Lookout | 📍 Water Tank | 🔵 Completed Dozer Line | 📍 Planned Fire Line |
| 🚁 Helibase | 📍 Mobile Weather Unit (WX) | 📍 H - Completed Hand Line | 📍 Division Break | 📍 Escape Route |
| 📍 Helispot | 📍 Pump | 📍 Fire Perimeter | 📍 State Highway | 📍 Collector Road |
| 📍 Incident Command Post | Ⓜ Repeater | 📍 Arterial Road | 📍 Collector Road | |

