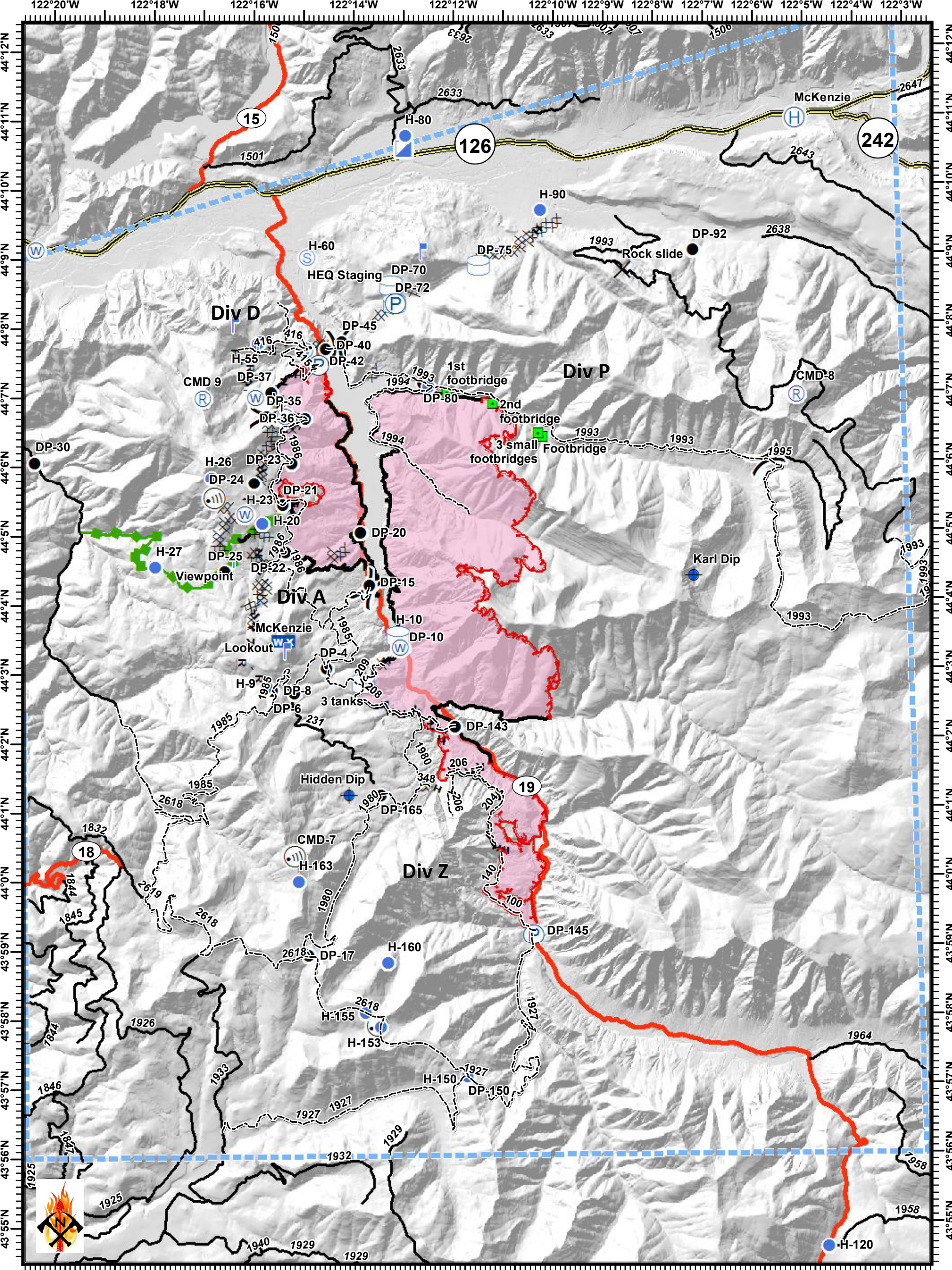
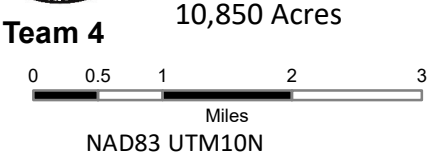


# Terwilliger Fire - Pilot Map

09/10/2018



**Terwilliger**  
**OR-WIF-180227**  
 Fire perimeter as of  
 09/08/2018 1732 hrs  
 10,850 Acres



- |                         |                       |                |                          |                              |
|-------------------------|-----------------------|----------------|--------------------------|------------------------------|
| ✕ Closure               | 📶 Internet Access     | 📍 Staging Area | 🔴 Uncontrolled Fire Edge | 🛣️ State Highway             |
| 📍 Dip Site              | 📍 Landmark            | 📍 Drop Point   | 🔵 TFR                    | 🛣️ Arterial Road             |
| 📍 Helibase              | 📍 Lookout             | 📍 Helispot     | 📍 Completed Line         | 🛣️ Collector Road            |
| 📍 Incident Command Post | 📍 Mobile Weather Unit | 📍 Pump         | 📍 Completed Dozer Line   | 📍 Emphasized_Routes          |
|                         | 📍 Repeater            | 📍 Repeater     | 📍 Water Source           | 📍 H - Completed Hand Line    |
|                         |                       |                | 📍 Water Tank             | 📍 R - Road as Completed Line |
|                         |                       |                | 📍 Division Break         | 📍 Completed Burnout          |
|                         |                       |                | 📍 Fire Perimeter         | 📍 Planned Fire Line          |
|                         |                       |                |                          | 📍 Escape Route               |

