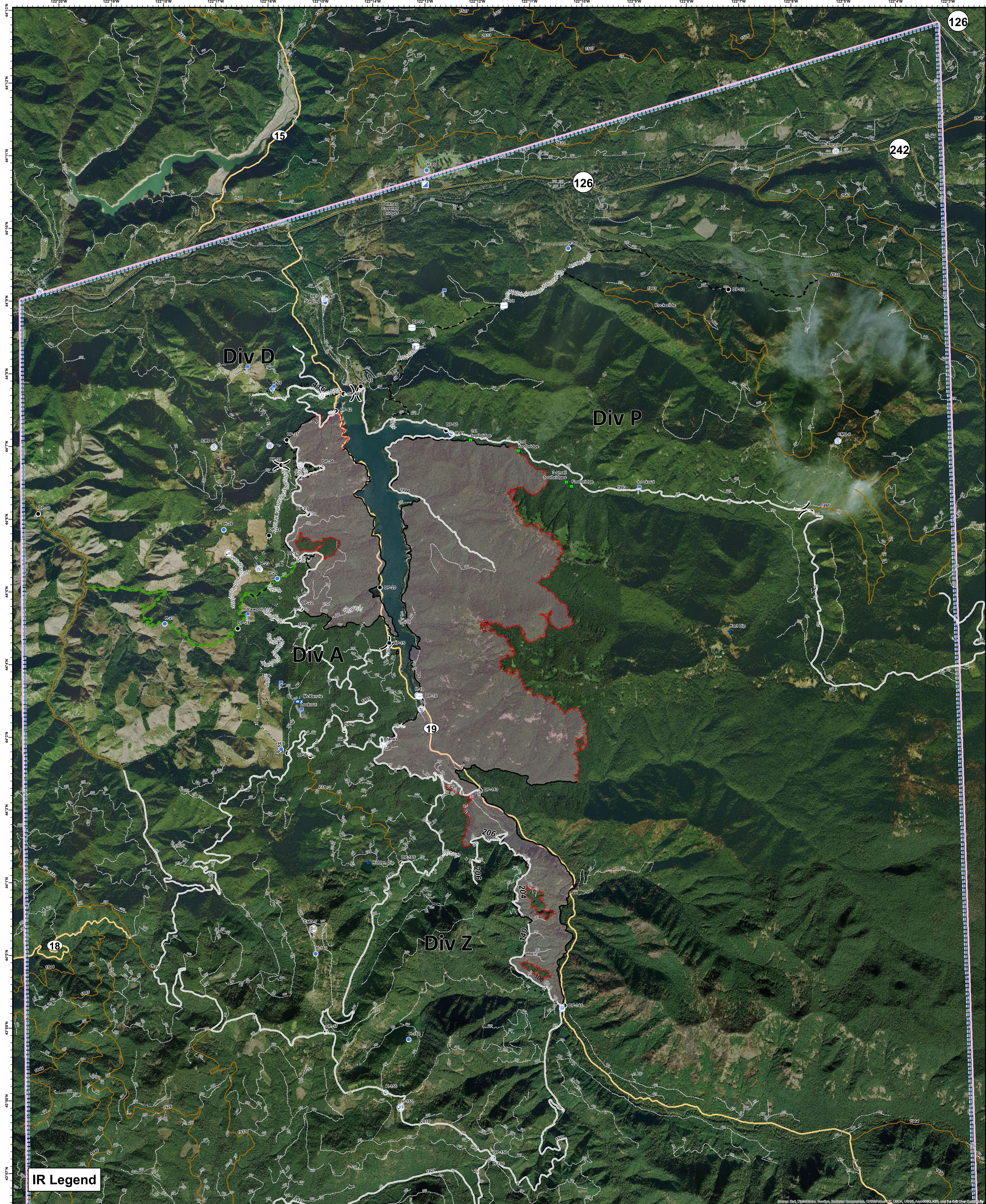


Terwilliger - Operations Orthophoto

09/11/2018



IR Legend

- | | | | |
|-------------------------|-----------------------|----------------------------------|---------------------------------|
| ✕ Closure | 📡 Mobile Weather Unit | 🔴 Uncontrolled Fire Edge | 🛣️ State Highway |
| 📍 Dip Site | 📍 Pump | 🚫 Temporary Flight Restriction | 🛣️ Arterial Road |
| ● Drop Point | 📡 Repeater | — Completed Line | 🛣️ Collector Road |
| 📍 Helibase | 📍 Staging Area | 🚧 Completed Dozer Line | 🛣️ Local Road |
| 📍 Helispot | 📍 Water Source | — H - H - Completed Hand Line | 🚫 Wildfire Daily Fire Perimeter |
| 📍 Incident Command Post | 📍 Water Tank | — R - R - Road as Completed Line | |
| 📡 Internet Access | 📍 Value at Risk | 🚧 Completed Burnout | |
| 📍 Landmark | ⎓ Division Break | ✕ Proposed Dozer Line | |
| 📍 Lookout | | — Planned Fire Line | |
| | | 🚧 Escape Route | |



Terwilliger

OR-WIF-180227

Fire perimeter as of
09/10/2018 2354 hrs
10,948 Acres

NAD83 UTM10N

