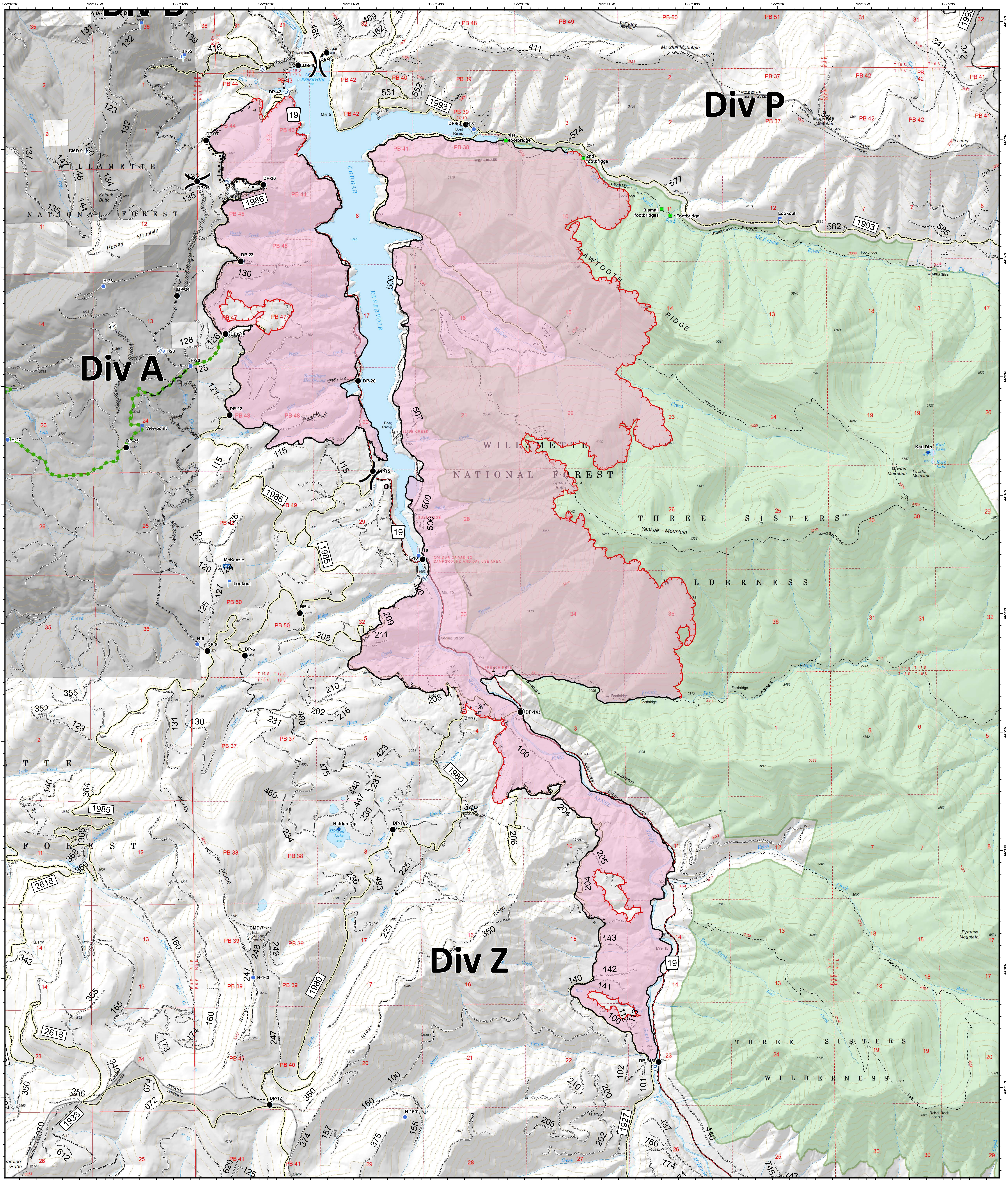


# Terwilliger - OPS Fire Area-Focus

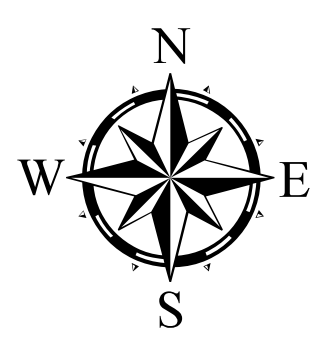
# 09/13/2018



## Terwilliger OR-WIF-180227

Fire perimeter as of  
09/10/2018 2354 hrs  
10,948 acres

Updated:  
Sep 12, 2018  
© 2204



- |                       |                  |                                |                     |                              |
|-----------------------|------------------|--------------------------------|---------------------|------------------------------|
| ✕ Closure             | Ⓟ Pump           | — Uncontrolled Fire Edge       | — State Highway     | — US Army Corps of Engineers |
| ◆ Dip Site            | Ⓡ Repeater       | — Temporary Flight Restriction | — Emphasized Routes | — US Forest Service          |
| ● Drop Point          | Ⓢ Staging Area   | — Completed Line               | — Arterial Road     | — Wilderness                 |
| ⊙ Helispot            | Ⓣ Water Source   | — Completed Dozer Line         | — Collector Road    |                              |
| Ⓜ Internet Access     | Ⓤ Water Tank     | — Completed Hand Line          | — Local Road        |                              |
| ■ Landmark            | Ⓥ Value at Risk  | — Road as Completed Line       | — Private Ownership |                              |
| Ⓛ Lookout             | Ⓦ Division Break | — Completed Burnout            |                     |                              |
| Ⓜ Mobile Weather Unit |                  | — Planned Fire Line            |                     |                              |
|                       |                  | — Escape Route                 |                     |                              |



0 0.35 0.7 1.4 Miles

NAD83 UTM10N