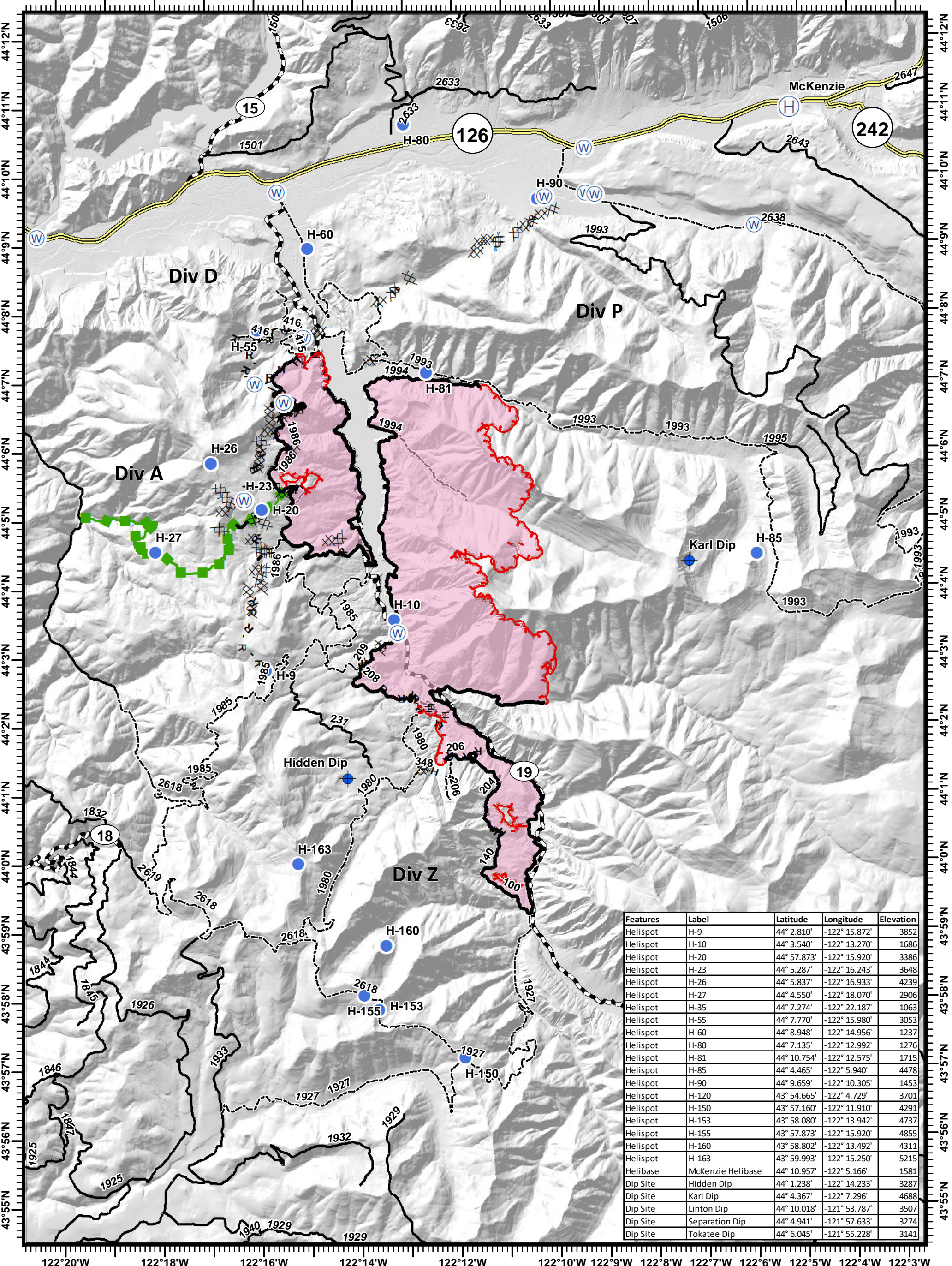


Terwilliger Fire - Pilot Map

09/14/2018

122°20'W 122°18'W 122°16'W 122°14'W 122°12'W 122°10'W 122°9'W 122°8'W 122°7'W 122°6'W 122°5'W 122°4'W 122°3'W



Features	Label	Latitude	Longitude	Elevation
Helispot	H-9	44° 2.810'	-122° 15.872'	3852
Helispot	H-10	44° 3.540'	-122° 13.270'	1686
Helispot	H-20	44° 57.873'	-122° 15.920'	3386
Helispot	H-23	44° 5.287'	-122° 16.243'	3648
Helispot	H-26	44° 5.837'	-122° 16.933'	4239
Helispot	H-27	44° 4.550'	-122° 18.070'	2906
Helispot	H-35	44° 7.274'	-122° 22.187'	1063
Helispot	H-55	44° 7.770'	-122° 15.980'	3053
Helispot	H-60	44° 8.948'	-122° 14.956'	1237
Helispot	H-80	44° 7.135'	-122° 12.992'	1276
Helispot	H-81	44° 10.754'	-122° 12.575'	1715
Helispot	H-85	44° 4.465'	-122° 5.940'	4478
Helispot	H-90	44° 9.659'	-122° 10.305'	1453
Helispot	H-120	43° 54.665'	-122° 4.729'	3701
Helispot	H-150	43° 57.160'	-122° 11.910'	4291
Helispot	H-153	43° 58.080'	-122° 13.942'	4737
Helispot	H-155	43° 57.873'	-122° 15.920'	4855
Helispot	H-160	43° 58.802'	-122° 13.492'	4311
Helispot	H-163	43° 59.993'	-122° 15.250'	5215
Helibase	McKenzie Helibase	44° 10.957'	-122° 5.166'	1581
Dip Site	Hidden Dip	44° 1.238'	-122° 14.233'	3287
Dip Site	Karl Dip	44° 4.367'	-122° 7.296'	4688
Dip Site	Linton Dip	44° 10.018'	-121° 53.787'	3507
Dip Site	Separation Dip	44° 4.941'	-121° 57.633'	3274
Dip Site	Tokatee Dip	44° 6.045'	-121° 55.228'	3141

Terwilliger
OR-WIF-180227
 Fire perimeter as of
 09/10/2018 2354 hrs
 10,948 Acres
 Updated:
 Sep 13, 2018
 @ 2308

- Dip Site
- Helibase
- Helispot
- Water Source
- Uncontrolled Fire Edge
- Completed Line
- Completed Dozer Line
- H - Completed Hand Line
- Completed Burnout
- Planned Fire Line
- Escape Route
- R - Road as Completed Line
- Completed Burnout
- Planned Fire Line
- Escape Route
- State Highway
- Emphasized Routes
- Arterial Road
- Collector Road



Miles
 NAD83 UTM10N