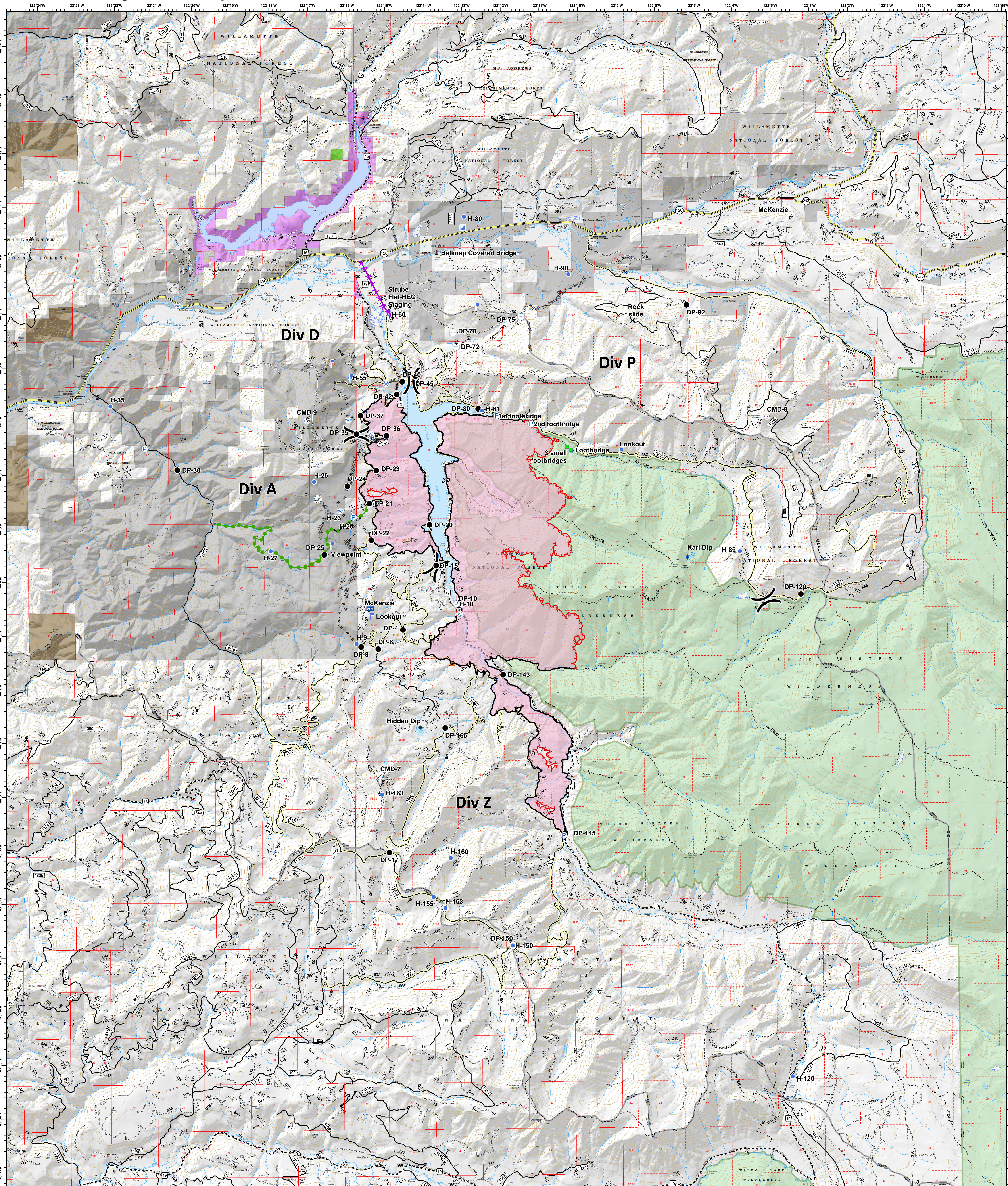


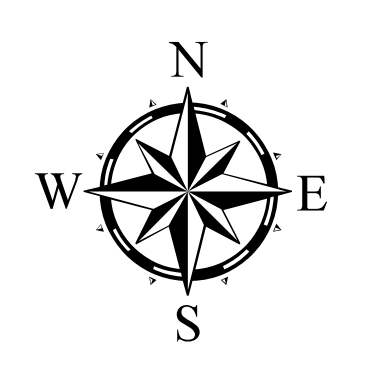
Terwilliger - Operations

09/18/2018



Terwilliger
OR-WIF-180227
 Fire perimeter as of
 09/14/2018 2338 hrs
 11,074 acres

Updated:
 Sep 17, 2018
 @ 2103



- | | | | | |
|-------------------------|-----------------------|--------------------------|---------------------------------|------------------------------------|
| ▲ Road Block | 📡 Mobile Weather Unit | 🔴 Uncontrolled Fire Edge | 🛣️ State Highway | 🌲 Oregon Department of State Lands |
| ✕ Closure | 🚰 Pump | — Completed Line | 🛤️ Emphasized Routes | 🏠 Private Industrial Ownership |
| ◆ Dip Site | 📡 Repeater | ⚡ Completed Dozer Line | 🛤️ Arterial Road | 🏠 Private Ownership |
| ● Drop Point | 📡 Staging Area | ⚡ Completed Hand Line | 🛤️ Collector Road | 🏠 US Army Corps of Engineers |
| ⊕ Helibase | 🚰 Water Source | ⚡ Road as Completed Line | 🛤️ Local Road | 🏠 US Forest Service |
| ⊕ Helispot | 🚰 Water Tank | ⚡ Completed Burnout | 🌲 Oregon Department of Forestry | 🌲 Wilderness |
| 📡 Incident Command Post | 🚰 Value at Risk | ⚡ Planned Fire Line | | |
| 📡 Internet Access | ⚡ Division Break | 🛤️ Escape Route | | |
| 📡 Landmark | | ⚡ Powerlines | | |
| 📡 Lookout | | | | |

