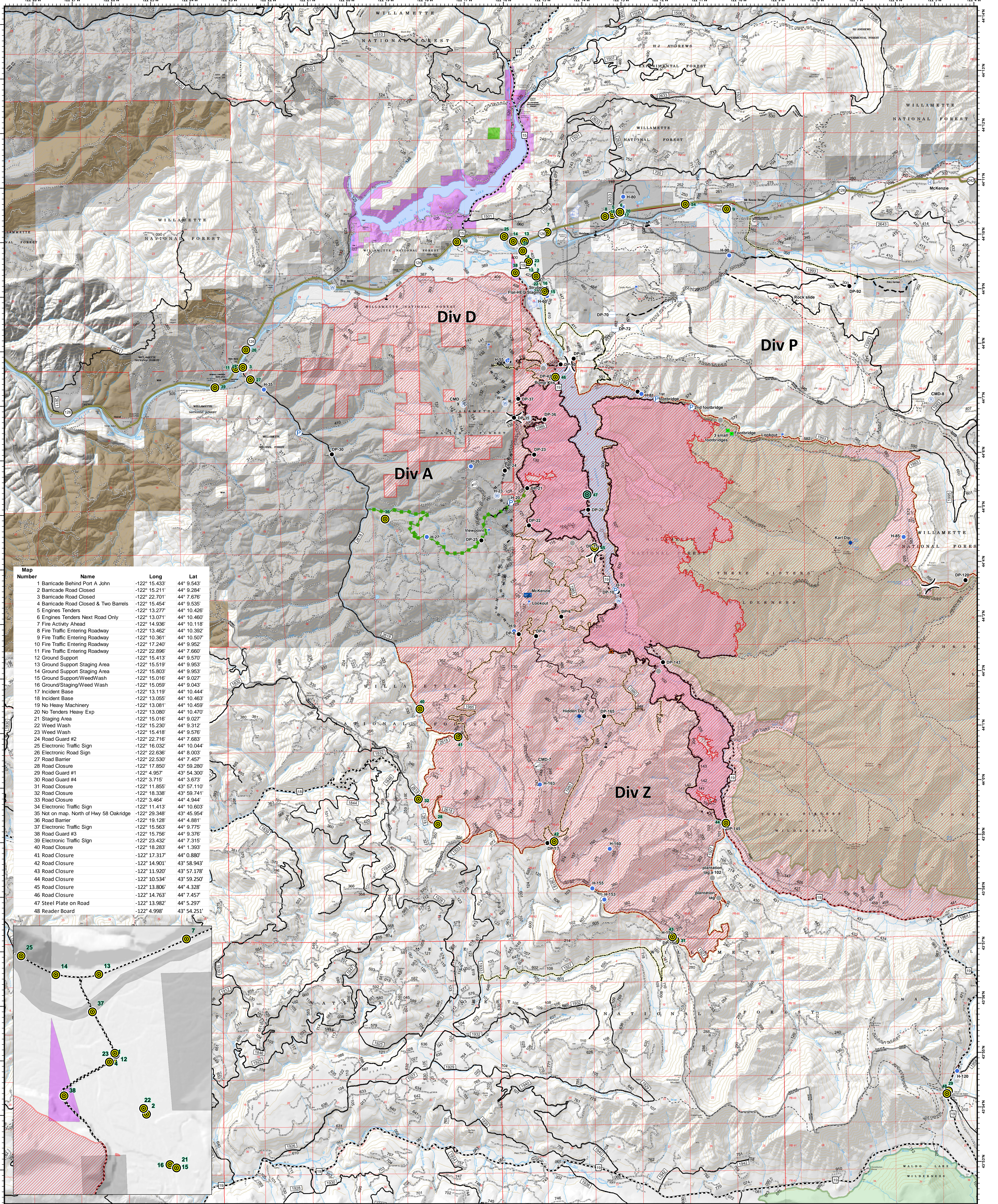
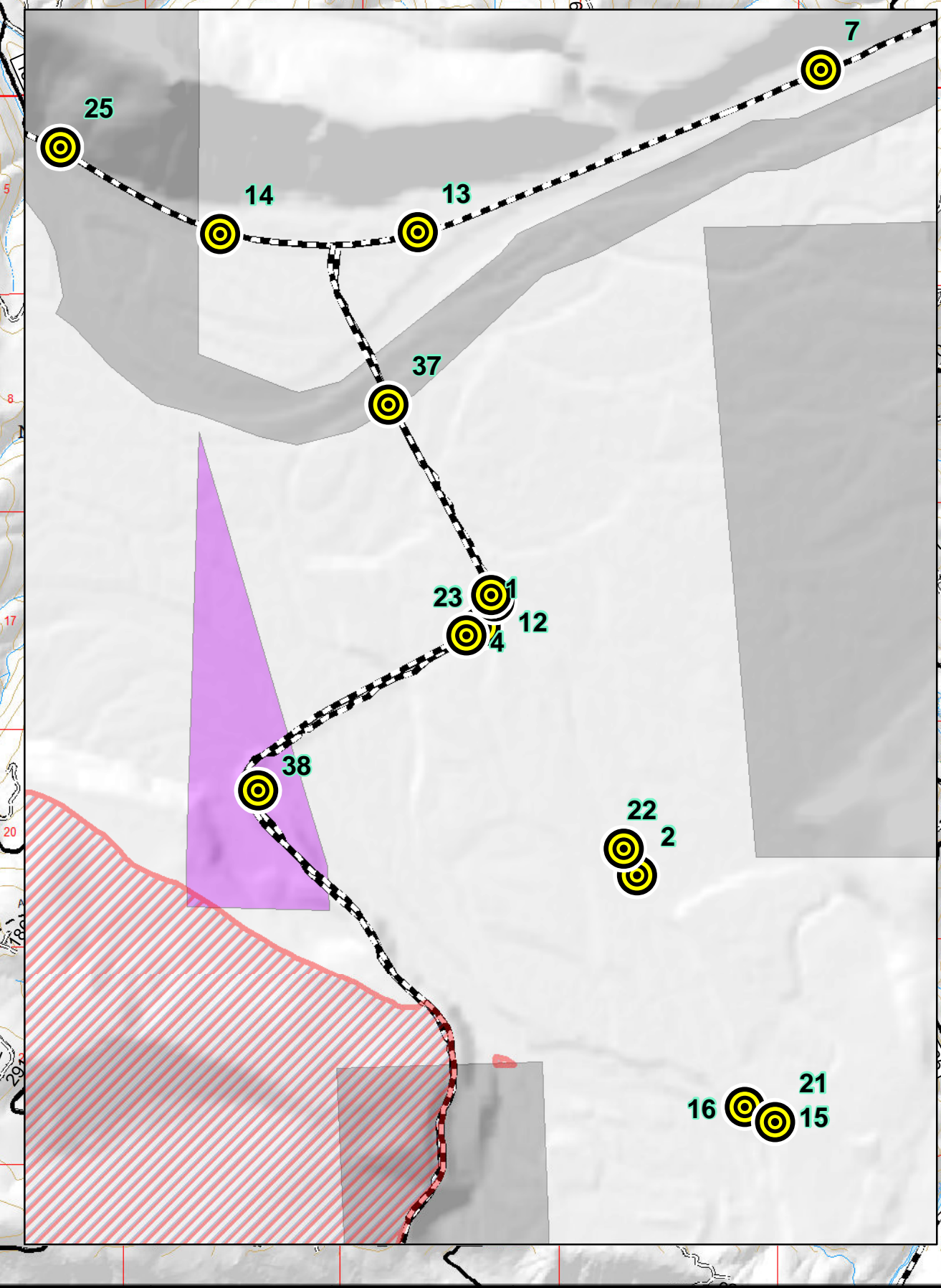


Terwilliger - Traffic Sign and Closure Locations

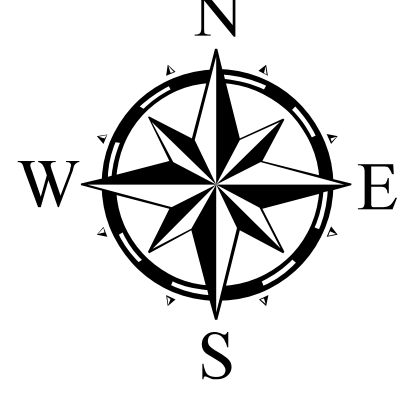
09/19/2018



Map Number	Name	Long	Lat
1	Barricade Behind Port A John	-122° 15.433'	44° 9.543'
2	Barricade Road Closed	-122° 15.211'	44° 9.284'
3	Barricade Road Closed	-122° 22.701'	44° 7.676'
4	Barricade Road Closed & Two Barrels	-122° 15.494'	44° 9.535'
5	Engines Tenders	-122° 13.277'	44° 10.428'
6	Engines Tenders Next Road Only	-122° 13.071'	44° 10.460'
7	Fire Activity Ahead	-122° 14.936'	44° 10.118'
8	Fire Traffic Entering Roadway	-122° 13.462'	44° 10.382'
9	Fire Traffic Entering Roadway	-122° 10.361'	44° 10.507'
10	Fire Traffic Entering Roadway	-122° 17.240'	44° 9.952'
11	Fire Traffic Entering Roadway	-122° 22.896'	44° 7.863'
12	Ground Support	-122° 15.413'	44° 9.570'
13	Ground Support Staging Area	-122° 15.519'	44° 9.953'
14	Ground Support Staging Area	-122° 15.803'	44° 9.953'
15	Ground Support/Weed Wash	-122° 15.016'	44° 9.027'
16	Ground/Staging/Weed Wash	-122° 15.059'	44° 9.043'
17	Incident Base	-122° 13.119'	44° 10.444'
18	Incident Base	-122° 13.055'	44° 10.463'
19	No Heavy Machinery	-122° 13.081'	44° 10.459'
20	No Tenders Heavy Exp	-122° 13.080'	44° 10.470'
21	Staging Area	-122° 15.016'	44° 9.027'
22	Weed Wash	-122° 15.230'	44° 9.312'
23	Weed Wash	-122° 15.418'	44° 9.576'
24	Road Guard #2	-122° 22.716'	44° 7.863'
25	Electronic Traffic Sign	-122° 16.032'	44° 10.044'
26	Electronic Road Sign	-122° 22.636'	44° 8.003'
27	Road Barrier	-122° 22.530'	44° 7.457'
28	Road Closure	-122° 17.850'	43° 59.280'
29	Road Guard #1	-122° 4.957'	43° 54.300'
30	Road Guard #4	-122° 3.715'	44° 3.673'
31	Road Closure	-122° 11.855'	43° 57.110'
32	Road Closure	-122° 18.338'	43° 59.741'
33	Road Closure	-122° 3.464'	44° 4.944'
34	Electronic Traffic Sign	-122° 11.413'	44° 10.603'
35	Not on map. North of Hwy 58 Oakridge	-122° 29.348'	43° 45.954'
36	Road Barrier	-122° 19.128'	44° 4.881'
37	Electronic Traffic Sign	-122° 15.563'	44° 9.775'
38	Road Guard #3	-122° 15.756'	44° 9.376'
39	Electronic Traffic Sign	-122° 23.432'	44° 7.315'
40	Road Closure	-122° 18.283'	44° 1.393'
41	Road Closure	-122° 17.317'	44° 0.880'
42	Road Closure	-122° 14.901'	43° 58.943'
43	Road Closure	-122° 11.920'	43° 57.178'
44	Road Closure	-122° 10.534'	43° 59.250'
45	Road Closure	-122° 13.806'	44° 4.328'
46	Road Closure	-122° 14.763'	44° 7.457'
47	Steel Plate on Road	-122° 13.982'	44° 5.297'
48	Reader Board	-122° 4.998'	43° 54.251'



Terwilliger
OR-WIF-180227
 Fire perimeter as of
 09/14/2018 2338 hrs
 11,082 Acres



- Traffic Sign
- Steel Plate on Road
- Closure
- Dip Site
- Drop Point
- Helibase
- Helispot
- Incident Command Post
- Internet Access
- Landmark
- Lookout
- Mobile Weather Unit
- Pump
- Repeater
- Staging Area
- Water Source
- Water Tank
- Value at Risk
- Other
- Division Break
- Uncontrolled Fire Edge
- Completed Line
- Completed Dozer Line
- Completed Hand Line
- Road as Completed Line
- Completed Burnout
- Proposed Dozer Line
- Planned Fire Line
- Escape Route
- ClosureArea
- Oregon Department of Forestry
- Oregon Department of State Lands
- Private Industrial Ownership
- Private Ownership
- US Army Corps of Engineers
- US Forest Service

