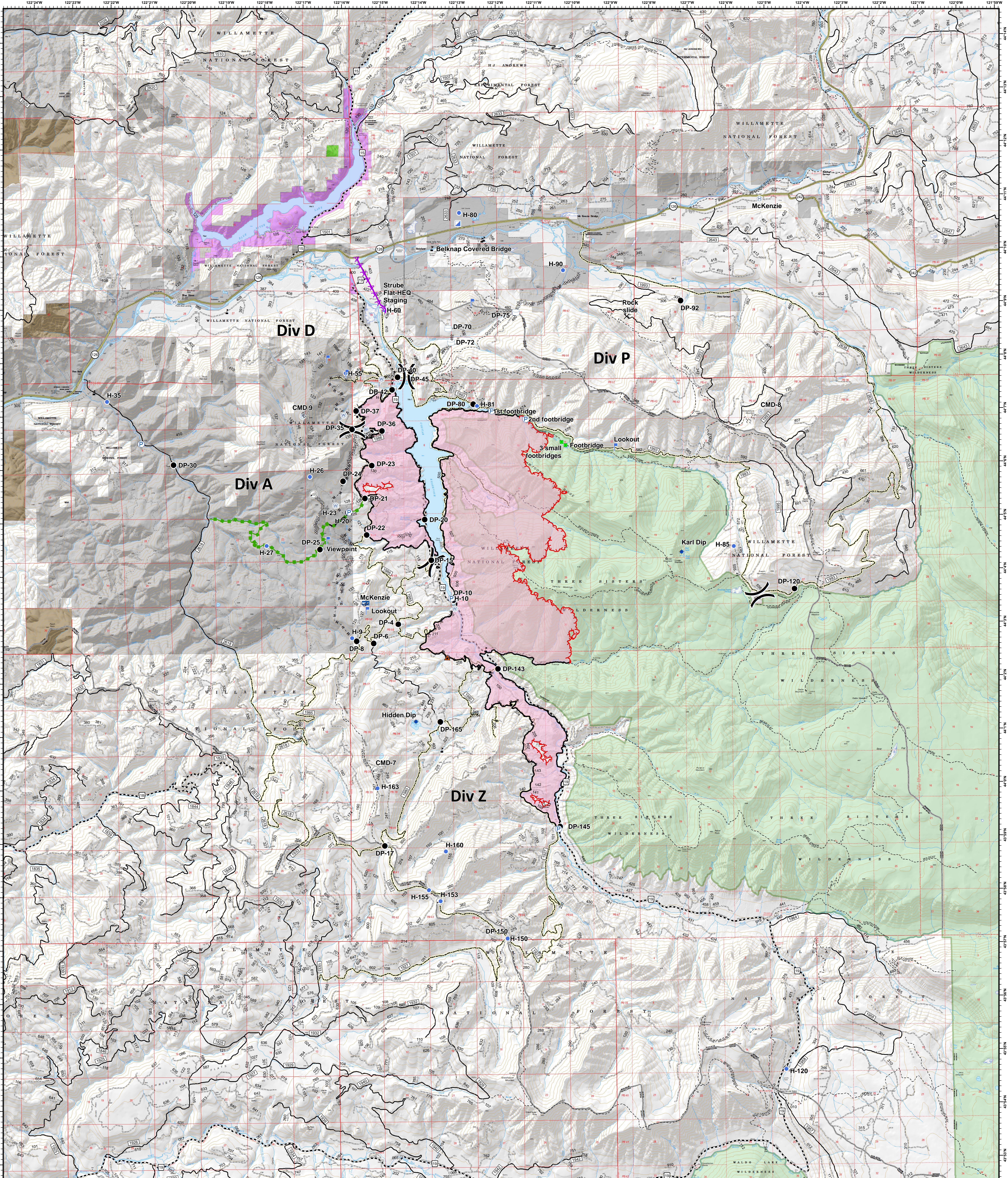


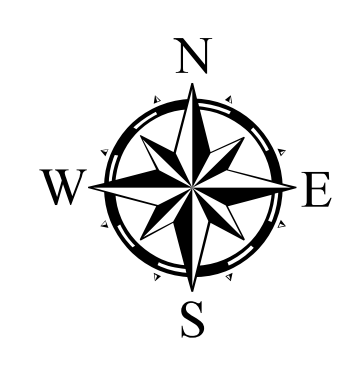
# Operations



**Terwilliger**  
**OR-WIF-180227**  
**09/20/2018**

Fire perimeter as of  
 09/14/2018 2338 hrs  
 11,082 acres

Updated:  
 Sep 19, 2018  
 © 2024



- |                         |                       |                          |                                 |                                    |
|-------------------------|-----------------------|--------------------------|---------------------------------|------------------------------------|
| ▲ Road Block            | 📶 Mobile Weather Unit | 🔴 Uncontrolled Fire Edge | 🛣️ State Highway                | 🌲 Oregon Department of State Lands |
| ✕ Closure               | 🚰 Pump                | — Completed Line         | 🛤️ Emphasized Routes            | 🏠 Private Industrial Ownership     |
| ♦ Dip Site              | 📡 Repeater            | ⚡ Completed Dozer Line   | 🛤️ Arterial Road                | 🏠 Private Ownership                |
| ● Drop Point            | 📍 Staging Area        | ⚡ Completed Hand Line    | 🛤️ Collector Road               | 🇺🇸 US Army Corps of Engineers      |
| ⊕ Helibase              | 💧 Water Source        | ⚡ Road as Completed Line | 🛤️ Local Road                   | 🇺🇸 US Forest Service               |
| ⊖ Helispot              | 💧 Water Tank          | ⚡ Completed Burnout      | 🟢 Oregon Department of Forestry | 🌲 Wilderness                       |
| 📍 Incident Command Post | ⚠️ Value at Risk      | ⚡ Planned Fire Line      |                                 |                                    |
| 📶 Internet Access       | ⚡ Escape Route        | ⚡ Powerlines             |                                 |                                    |
| 📍 Landmark              | ⚡ Division Break      |                          |                                 |                                    |
| 📍 Lookout               |                       |                          |                                 |                                    |

