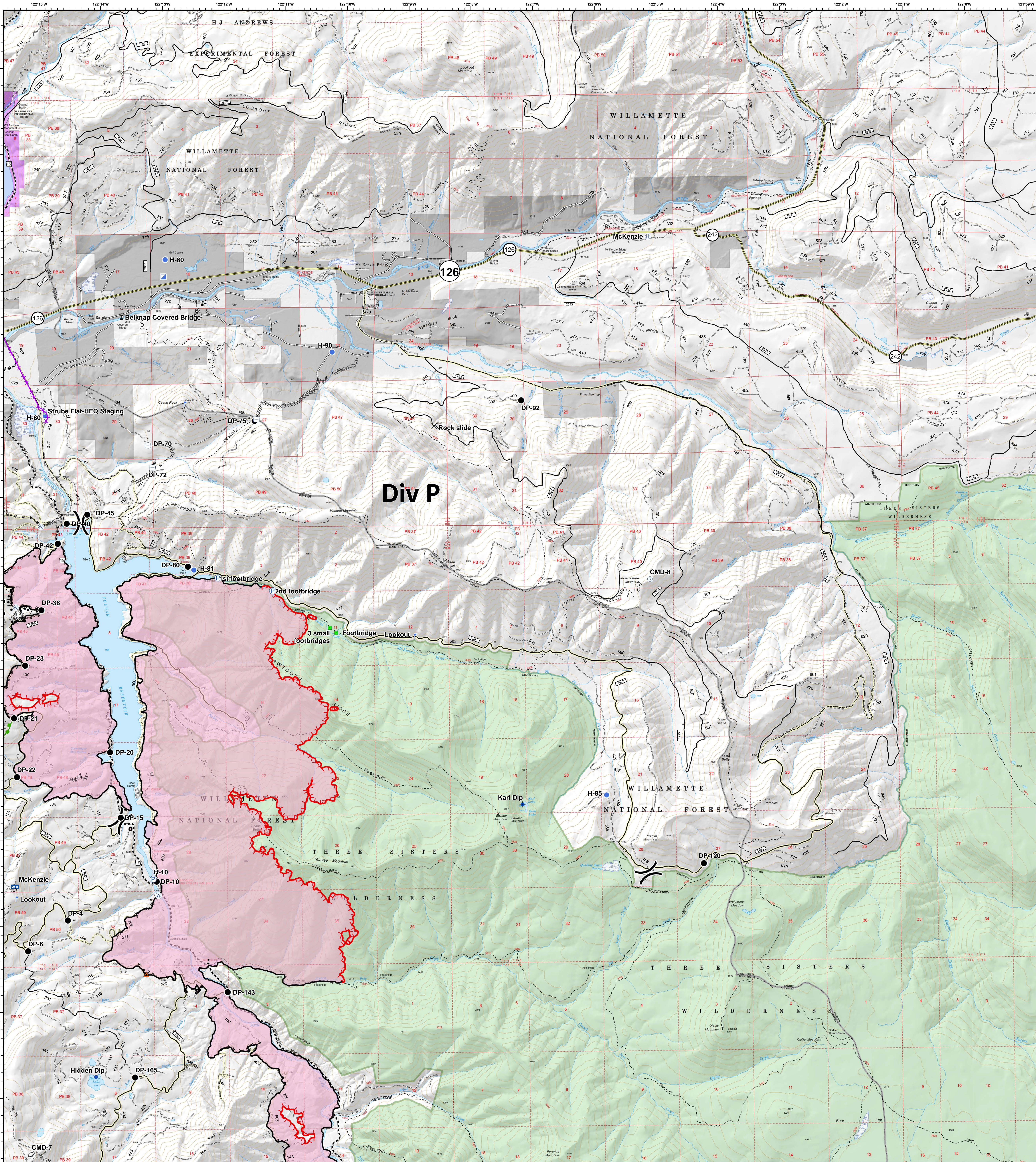


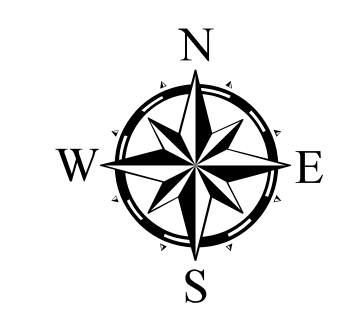
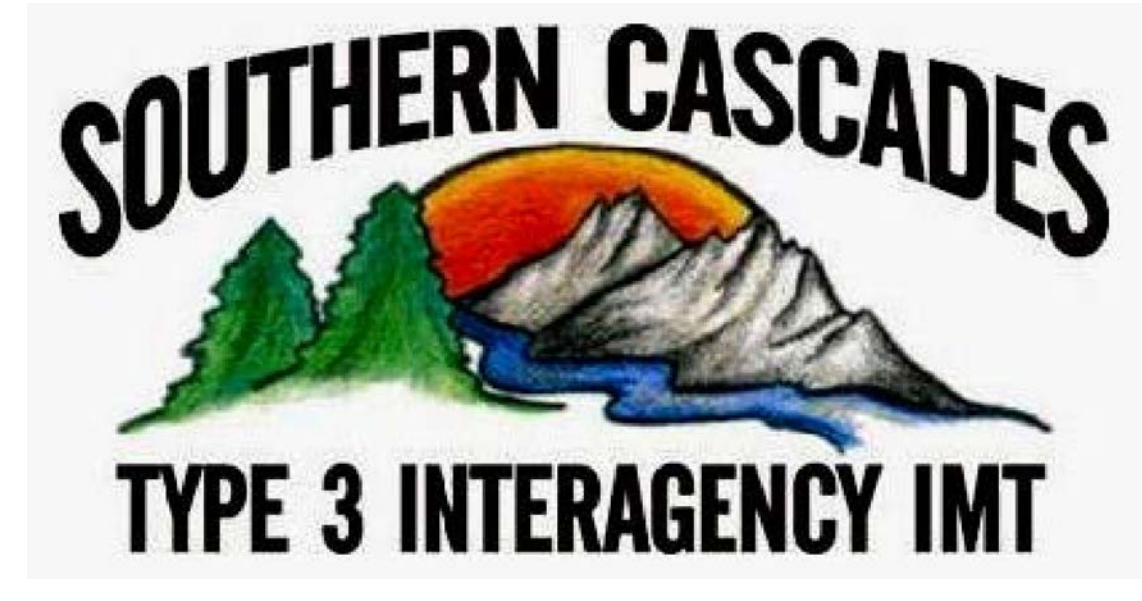
Operations Div P



Terwilliger OR-WIF-180227

Fire perimeter as of
09/14/2018 2338 hrs
11,082 acres

- | | | | | |
|-------------------------|-----------------------|-------------------------------|----------------------------------|------------------------------|
| ▲ Impassable Road | 📡 Mobile Weather Unit | 🔴 Uncontrolled Fire Edge | — R - R - Road as Completed Line | 🛣️ State Highway |
| ⓧ Closure | 📍 Pump | — Completed Line | 🛤️ Completed Burnout | 🛣️ Arterial Road |
| ● Dip Site | 📡 Repeater | 🚧 Completed Dozer Line | 🛤️ Escapes Route | 🛣️ Collector Road |
| ● Drop Point | 📍 Staging Area | — H - H - Completed Hand Line | ⚡ Powerlines | 🛣️ Local Road |
| 📡 Helibase | 💧 Water Source | | | 🏠 Private Ownership |
| 📡 Helispot | 🛢️ Water Tank | | | 👷 US Army Corps of Engineers |
| 📍 Incident Command Post | ⚠️ Value at Risk | | | 🌲 US Forest Service |
| 📡 Internet Access |) (Division Break | | | 🌲 Wilderness |
| 📍 Landmark | | | | |
| 📍 Lookout | | | | |



0 0.5 1 2 Miles
NAD83 UTM10N