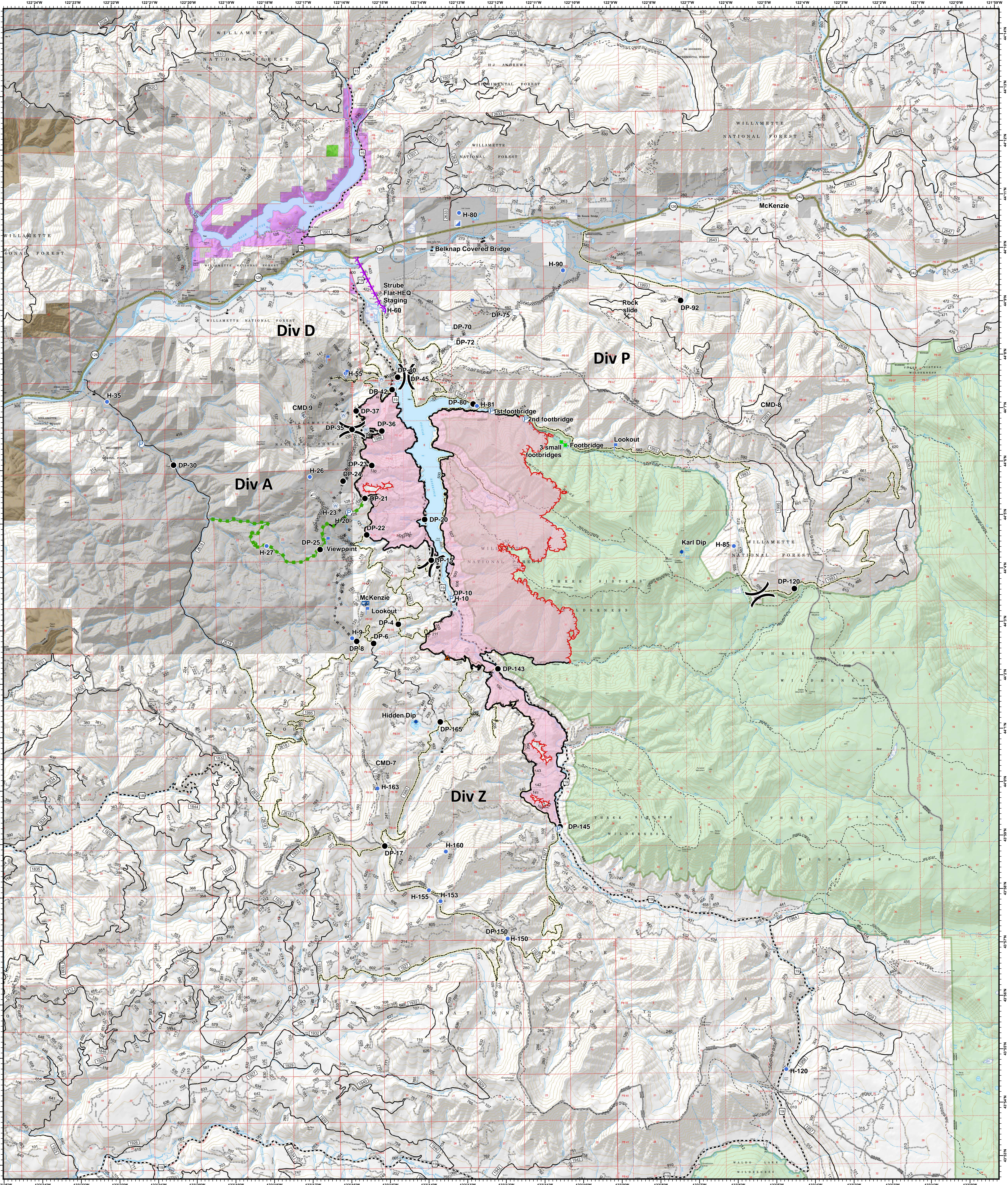


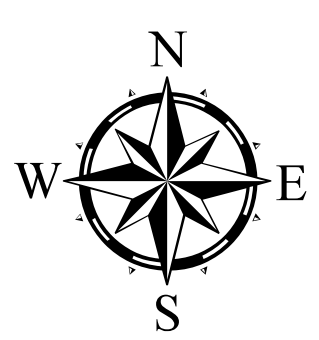
Operations



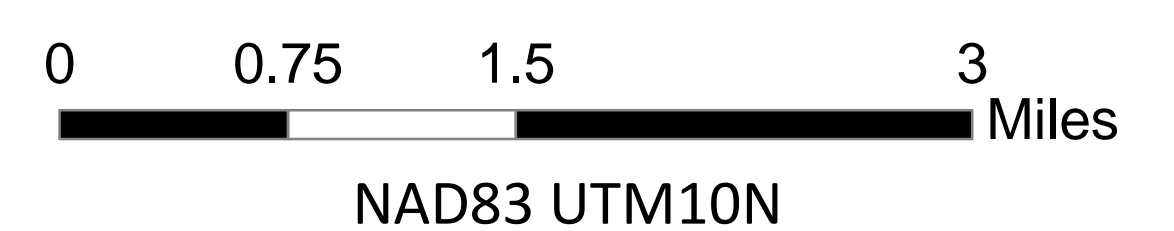
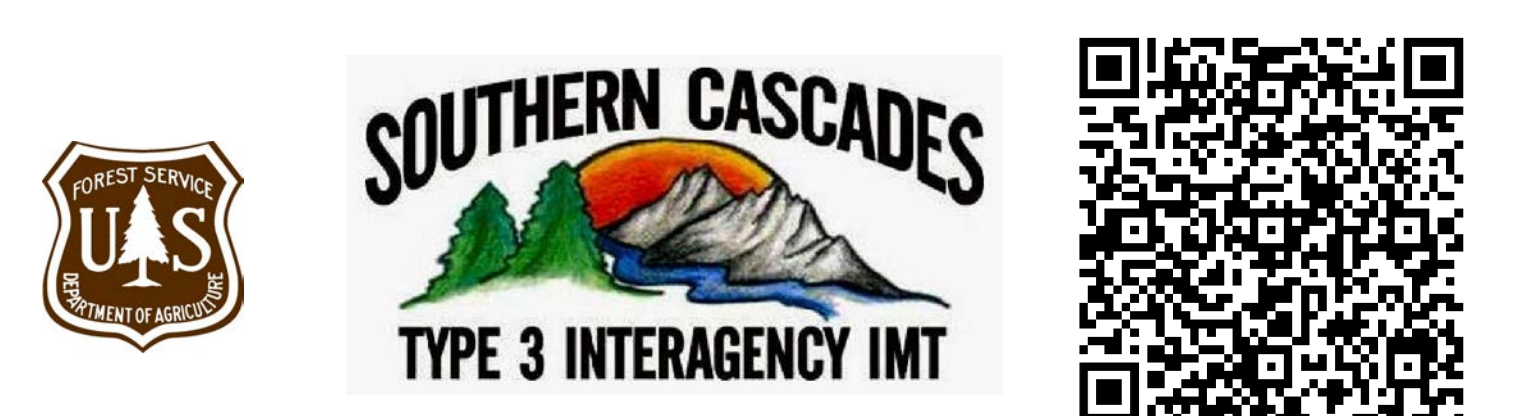
**Terwilliger
OR-WIF-180227**

Fire perimeter as of
09/14/2018 2338 hrs
11,082 acres

Updated:
Sep 20, 2018
@ 1222



- | | | | | |
|-------------------------|-----------------------|------------------------------------|---------------------------------|------------------------------------|
| ▲ Road Block | 📡 Mobile Weather Unit | 🔴 Uncontrolled Fire Edge | 🛣 State Highway | 🌲 Oregon Department of State Lands |
| ✕ Closure | 🚰 Pump | — Completed Line | 🛩 Emphasized Routes | 🏠 Private Industrial Ownership |
| ◆ Dip Site | 📡 Repeater | ⋯ Completed Dozer Line | ⋯ Arterial Road | 🏠 Private Ownership |
| ● Drop Point | 📡 Staging Area | — H - H - H Completed Hand Line | — Collector Road | 🇺🇸 US Army Corps of Engineers |
| ⊕ Helibase | 🚰 Water Source | — R - R - R Road as Completed Line | — Local Road | 🇺🇸 US Forest Service |
| ⊖ Helispot | 🚰 Water Tank | — Completed Burnout | 🟩 Oregon Department of Forestry | 🌲 Wilderness |
| 📡 Incident Command Post | ⚠ Value at Risk | — Planned Fire Line | | |
| 📡 Internet Access | ⎓ Division Break | 🟩 Escape Route | | |
| 📍 Landmark | | ⚡ Powerlines | | |
| 👁 Lookout | | | | |



NAD83 UTM10N