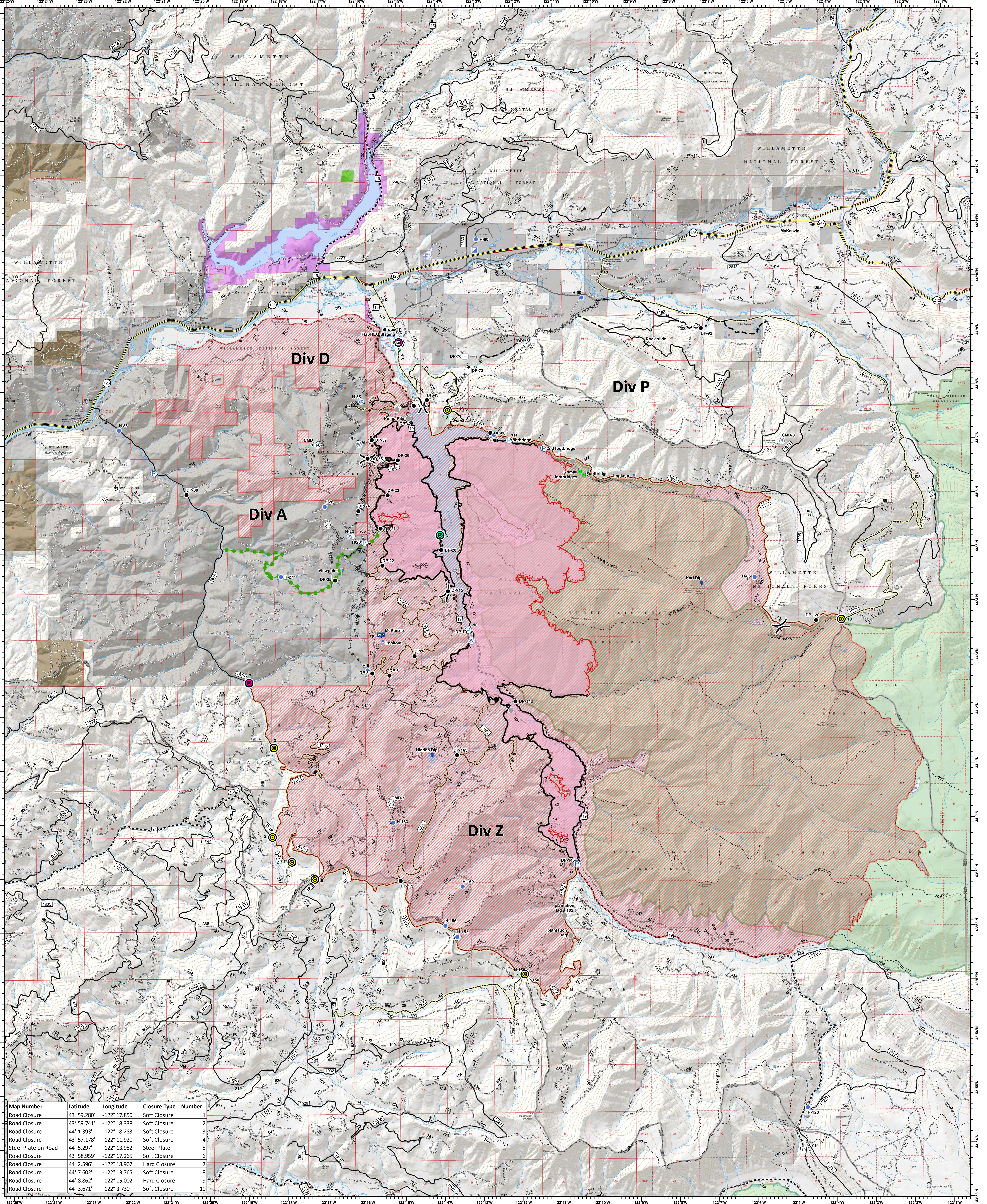


Traffic Sign and Closure Locations

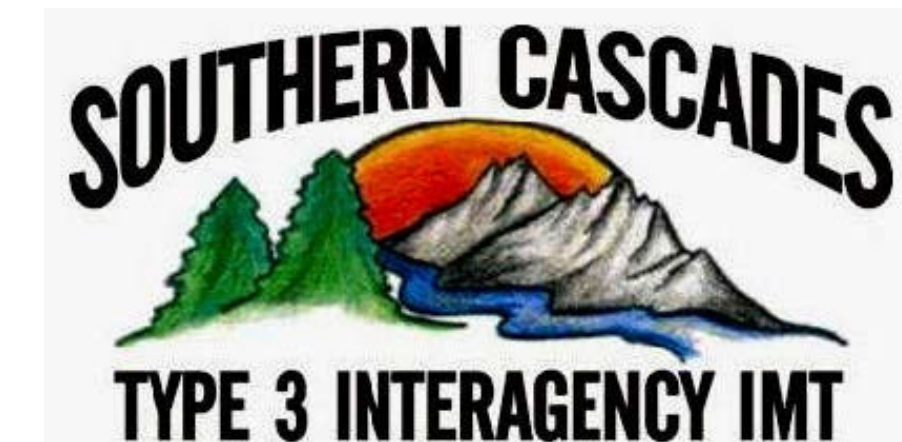
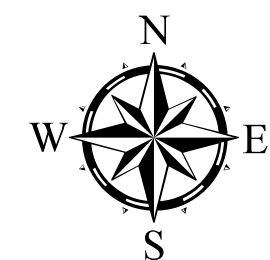


Map Number	Latitude	Longitude	Closure Type	Number
Road Closure	43° 59.280'	-122° 17.850'	Soft Closure	1
Road Closure	43° 59.741'	-122° 18.338'	Soft Closure	2
Road Closure	44° 1.393'	-122° 18.283'	Soft Closure	3
Road Closure	43° 57.178'	-122° 11.920'	Soft Closure	4
Steel Plate on Road	44° 5.297'	-122° 13.982'	Steel Plate	5
Road Closure	43° 58.959'	-122° 17.265'	Soft Closure	6
Road Closure	44° 2.596'	-122° 18.907'	Hard Closure	7
Road Closure	44° 7.602'	-122° 13.765'	Soft Closure	8
Road Closure	44° 8.862'	-122° 15.002'	Hard Closure	9
Road Closure	44° 3.671'	-122° 3.730'	Soft Closure	10

Terwilliger
OR-WIF-180227

Fire perimeter as of
09/14/2018 2338 hrs
11,082 Acres

- | | | | | |
|----------------------|-------------------------|------------------|--------------------------|------------------------------------|
| Road Closures | ✕ Closure | Ⓟ Pump | — Uncontrolled Fire Edge | ▨ ClosureArea |
| Ⓧ Hard Closure | Ⓡ Dip Site | Ⓢ Repeater | — Completed Line | ▨ Oregon Department of Forestry |
| Ⓨ Soft Closure | ● Drop Point | Ⓣ Staging Area | Ⓢ Completed Dozer Line | ▨ Oregon Department of State Lands |
| Ⓩ Steel Plate | Ⓤ Helibase | Ⓤ Water Source | Ⓢ Completed Hand Line | ▨ Private Industrial Ownership |
| | Ⓥ Helispot | Ⓤ Water Tank | Ⓢ Road as Completed Line | ▨ Private Ownership |
| | Ⓦ Incident Command Post | Ⓤ Value at Risk | Ⓢ Completed Burnout | ▨ US Army Corps of Engineers |
| | Ⓧ Internet Access | Ⓤ Other | Ⓢ Proposed Dozer Line | ▨ US Forest Service |
| | Ⓨ Landmark | Ⓤ Division Break | Ⓢ Planned Fire Line | |
| | Ⓩ Lookout | | Ⓢ Escape Route | |
| | Ⓧ Mobile Weather Unit | | | |



0 0.5 1 2 3 Miles
NAD83 UTM10N