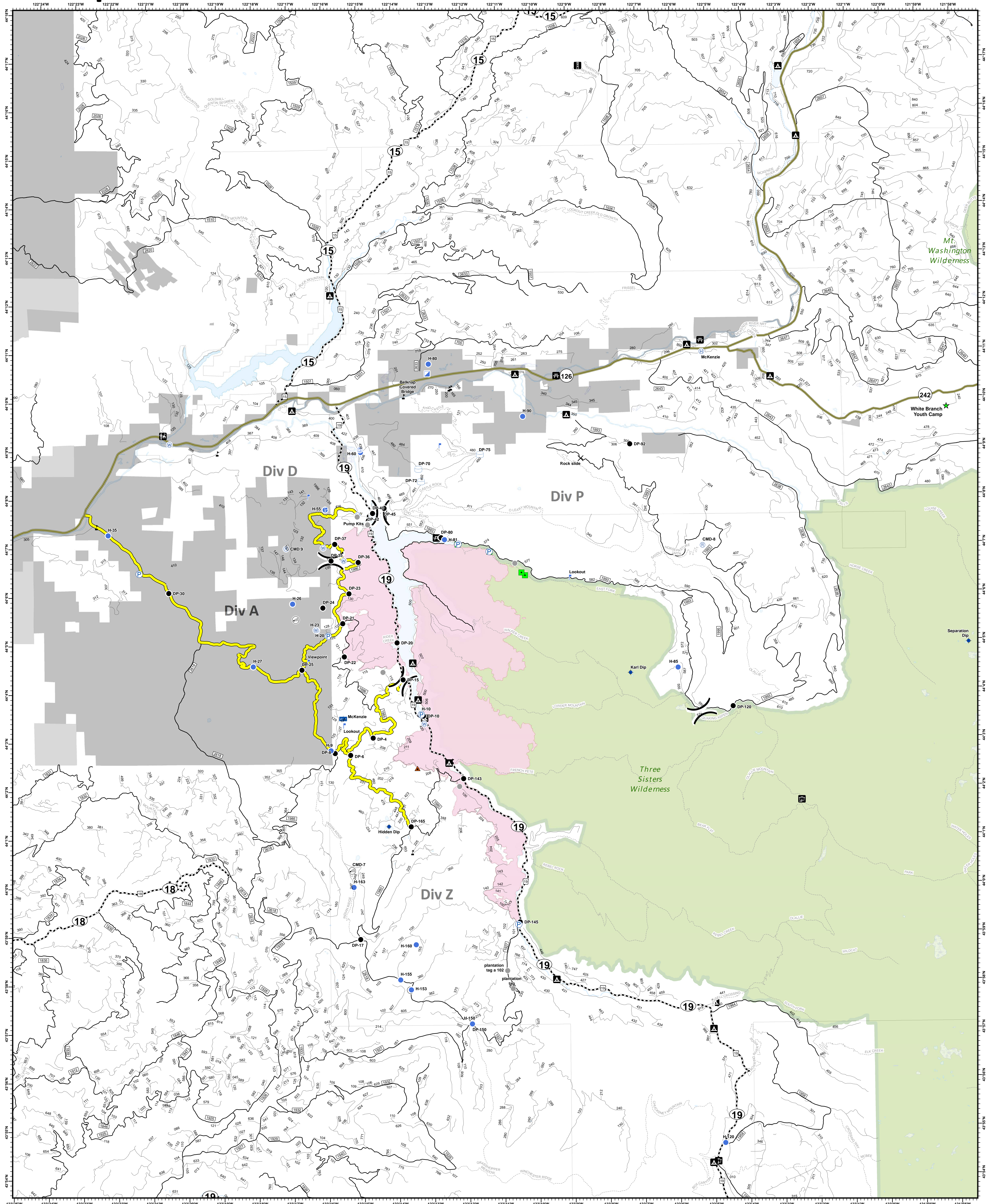
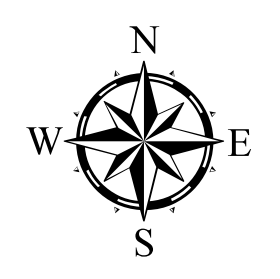


Transportation

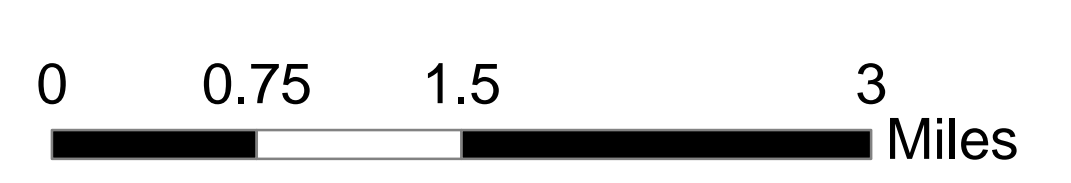
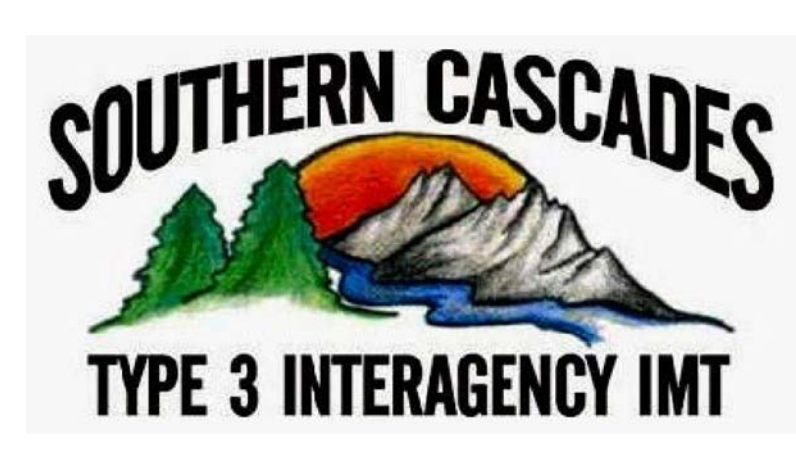


Terwilliger
Transportation
OR-WIF-180227



Fire perimeter as of
 09/14/2018 2338 hrs
 11,082 Acres

- | | | | | |
|-----------------------|---------------------|--------------------------|-------------------------|------------------------------|
| WhiteBranch_YouthCamp | Internet Access | Water Tank | Campground | Arterial Road |
| Impassable Road | Landmark | Value at Risk | Forest Service Facility | Collector Road |
| Closure | Lookout | Other | Lookout - Permanent | Local Road |
| Dip Site | Mobile Weather Unit | Division Break | Picnic Area | Private Industrial Ownership |
| Drop Point | Pump | Ranger District Office | Ranger District Office | Private Ownership |
| Helibase | Repeater | State Highway | State Highway | US Forest Service |
| Helispot | Staging Area | Trail, Wilderness | Wilderness | |
| Incident Command Post | Water Source | Primary_Transport_Routes | | |



NAD83 UTM10N