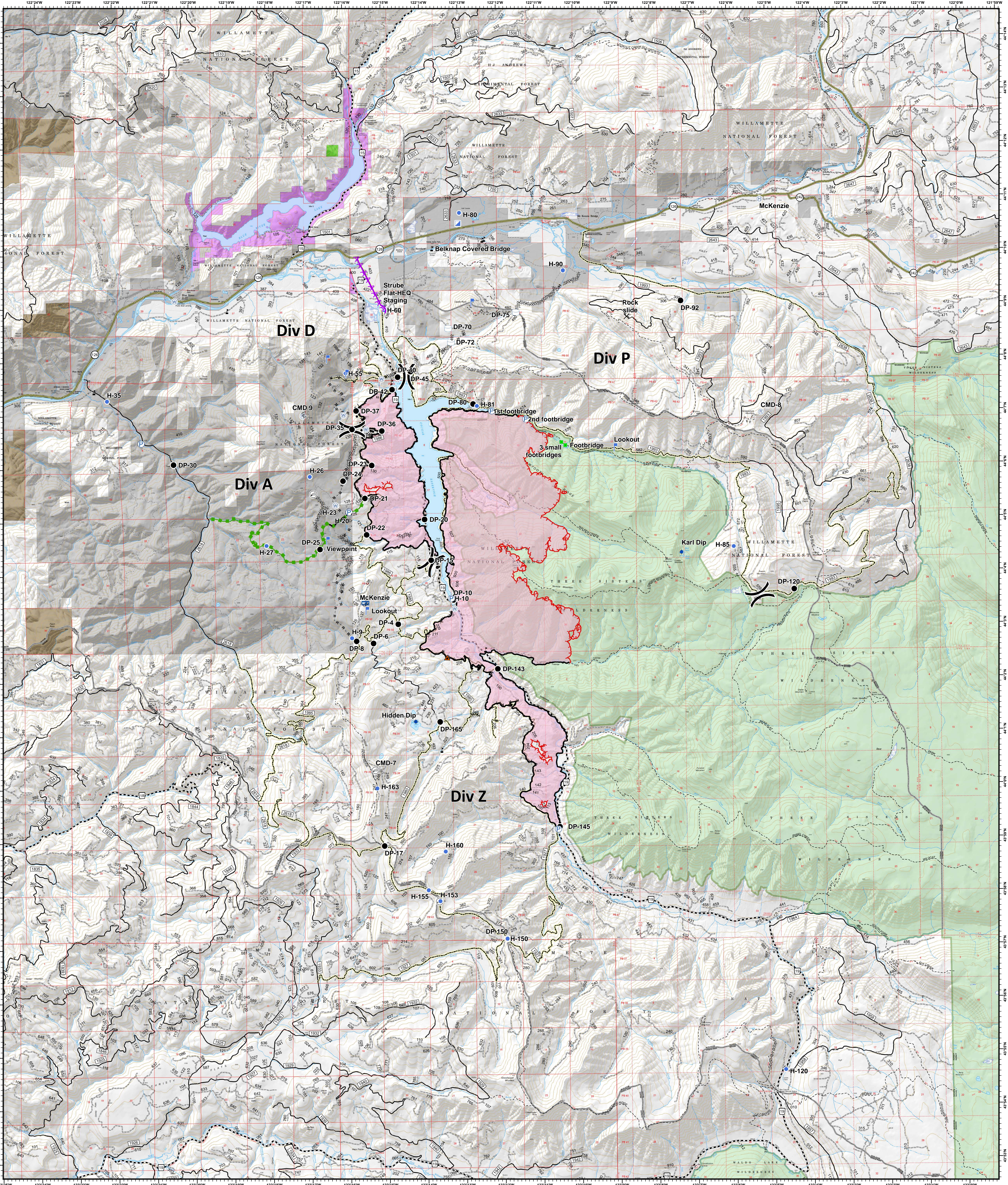
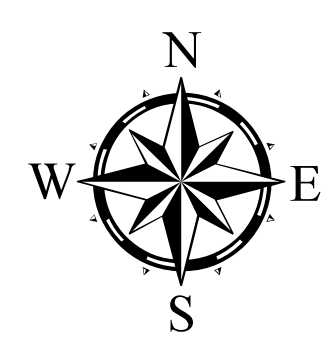


Operations

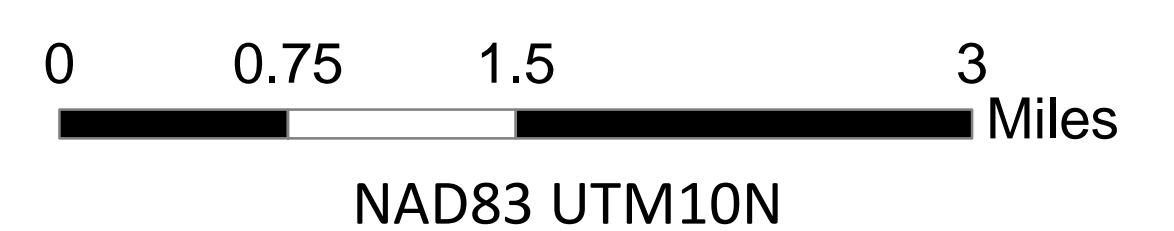


**Terwilliger
OR-WIF-180227**

Fire perimeter as of
09/21/2018, 1415 hrs
11,187 acres



- | | | | | |
|-------------------------|-----------------------|--------------------------|---------------------------------|------------------------------------|
| ▲ Road Block | 📡 Mobile Weather Unit | 🔴 Uncontrolled Fire Edge | 🛣 State Highway | 🏞 Oregon Department of State Lands |
| ✕ Closure | 🚰 Pump | — Completed Line | 🟡 Emphasized Routes | 🏠 Private Industrial Ownership |
| ◆ Dip Site | 📡 Repeater | ⋯ Completed Dozer Line | ⋯ Arterial Road | 🏠 Private Ownership |
| ● Drop Point | 📡 Staging Area | — Completed Hand Line | — Collector Road | 🇺🇸 US Army Corps of Engineers |
| ⊕ Helibase | 🚰 Water Source | ⋯ Road as Completed Line | — Local Road | 🇺🇸 US Forest Service |
| ⊕ Helispot | 🚰 Water Tank | ⋯ Completed Burnout | 🟢 Oregon Department of Forestry | 🌲 Wilderness |
| 📡 Incident Command Post | ⚠ Value at Risk | ⋯ Planned Fire Line | | |
| 📡 Internet Access | ⋯ Division Break | 🟢 Escape Route | | |
| 📍 Landmark | | ⚡ Powerlines | | |
| 👁 Lookout | | | | |



NAD83 UTM10N