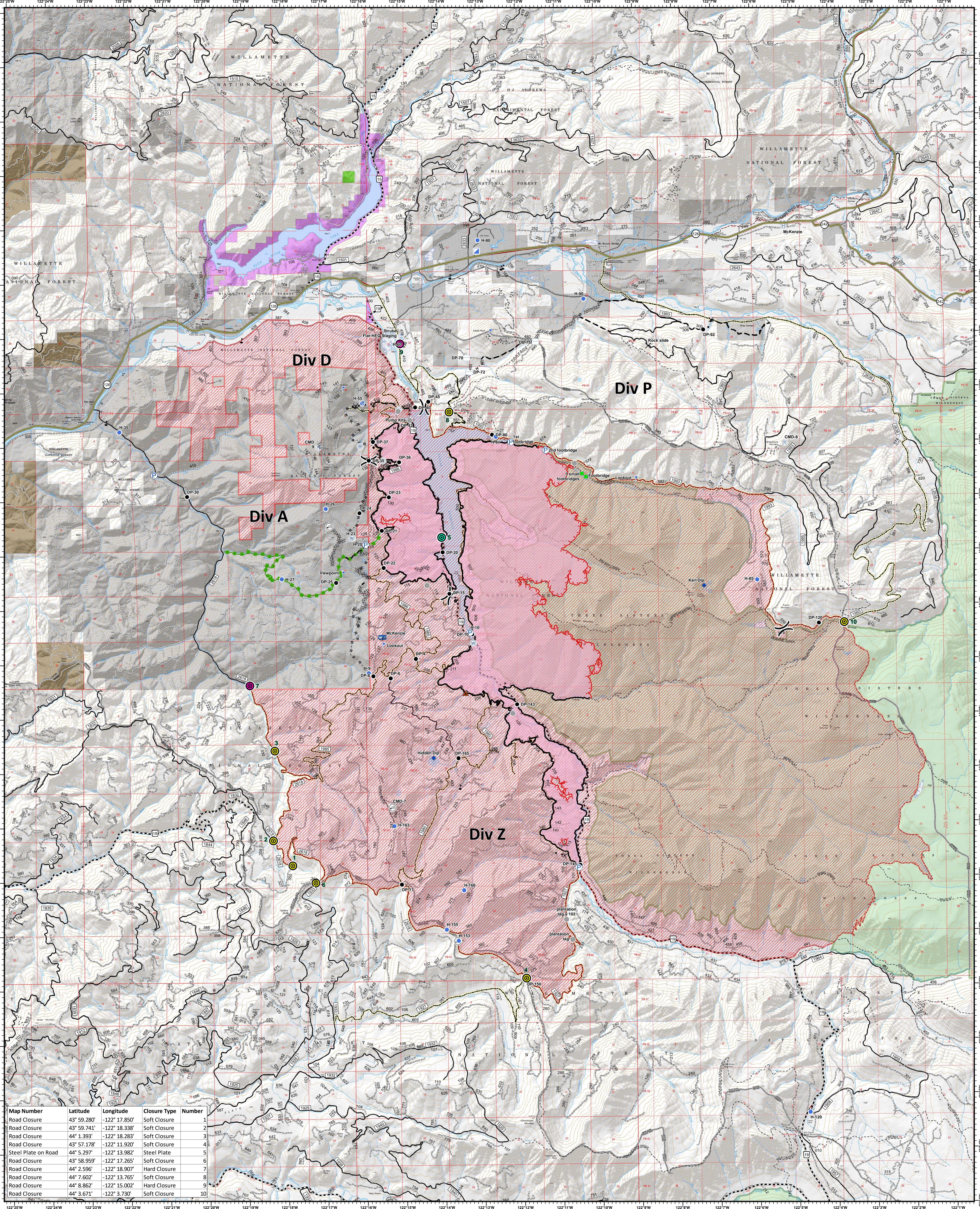


# Traffic Sign and Closure Locations

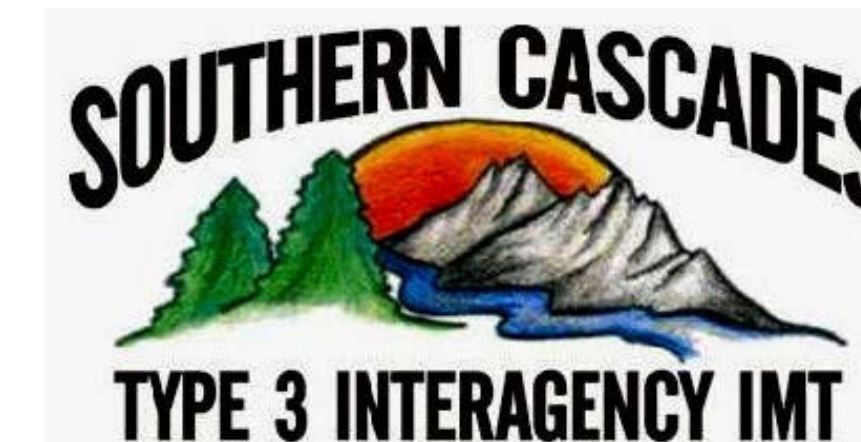
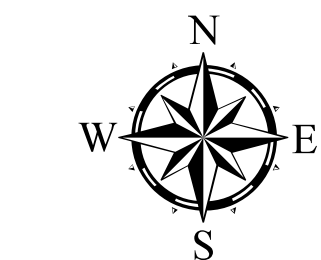


Map Number	Latitude	Longitude	Closure Type	Number
Road Closure	43° 59.280'	-122° 17.850'	Soft Closure	1
Road Closure	43° 59.741'	-122° 18.338'	Soft Closure	2
Road Closure	44° 1.393'	-122° 18.283'	Soft Closure	3
Road Closure	43° 57.178'	-122° 11.920'	Soft Closure	4
Steel Plate on Road	44° 5.297'	-122° 13.982'	Steel Plate	5
Road Closure	43° 58.959'	-122° 17.265'	Soft Closure	6
Road Closure	44° 2.596'	-122° 18.907'	Hard Closure	7
Road Closure	44° 7.602'	-122° 13.765'	Soft Closure	8
Road Closure	44° 8.862'	-122° 15.002'	Hard Closure	9
Road Closure	44° 3.671'	-122° 3.730'	Soft Closure	10

## Terwilliger OR-WIF-180227

Fire perimeter as of  
09/21/2018, 1415 hrs  
11,187 Acres

- |                      |                       |                |                        |                                  |
|----------------------|-----------------------|----------------|------------------------|----------------------------------|
| <b>Road Closures</b> | × Closure             | Pump           | Uncontrolled Fire Edge | ClosureArea                      |
| Hard Closure         | Dip Site              | Repeater       | Completed Line         | Oregon Department of Forestry    |
| Soft Closure         | Drop Point            | Staging Area   | Completed Dozer Line   | Oregon Department of State Lands |
| Steel Plate          | Helibase              | Water Source   | Completed Hand Line    | Private Industrial Ownership     |
|                      | Helispot              | Water Tank     | Road as Completed Line | Private Ownership                |
|                      | Incident Command Post | Value at Risk  | Completed Burnout      | US Army Corps of Engineers       |
|                      | Internet Access       | Other          | Proposed Dozer Line    | US Forest Service                |
|                      | Landmark              | Division Break | Planned Fire Line      |                                  |
|                      | Lookout               | Escape Route   |                        |                                  |
|                      | Mobile Weather Unit   |                |                        |                                  |



0 0.5 1 2 3 Miles  
NAD83 UTM10N