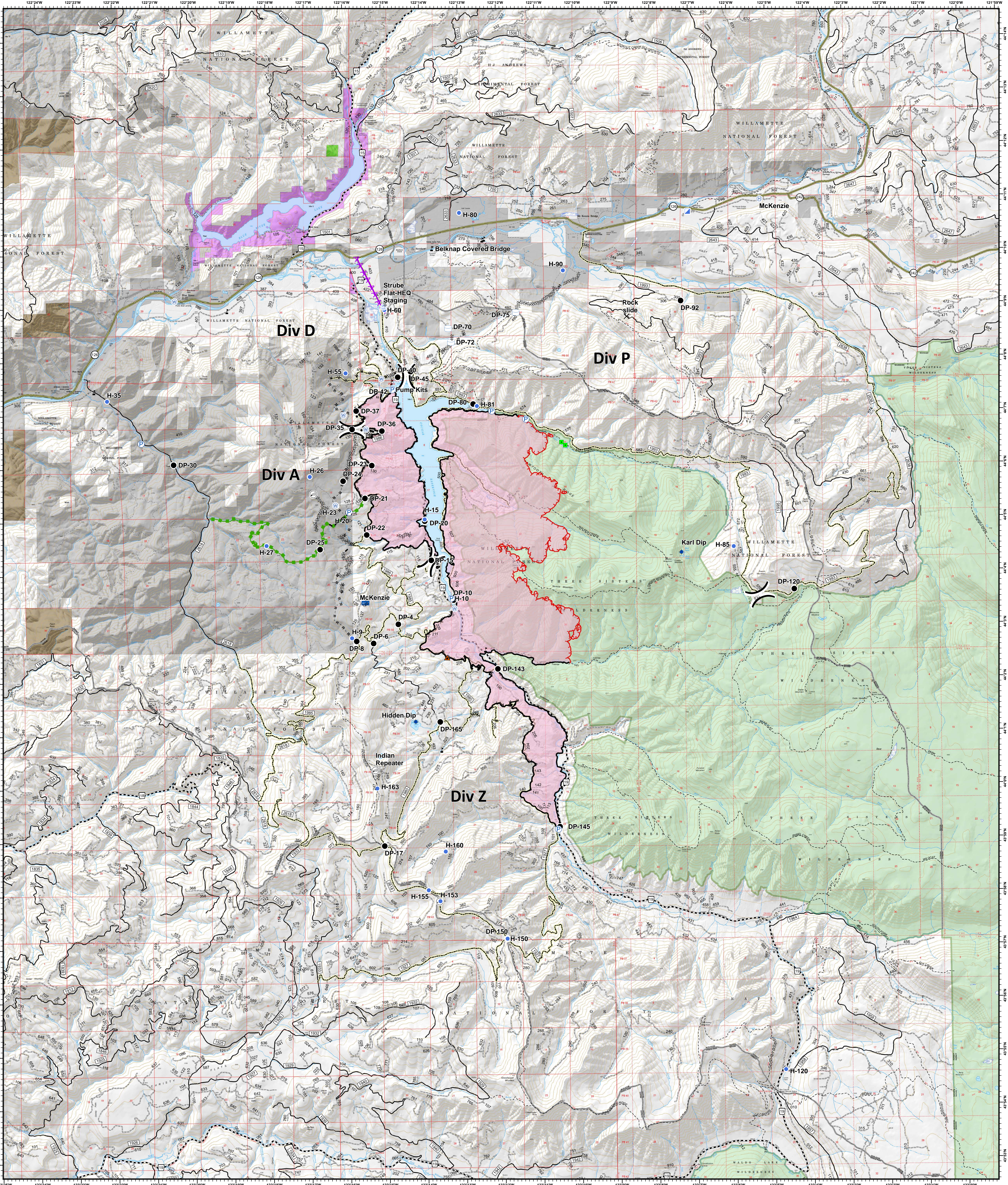
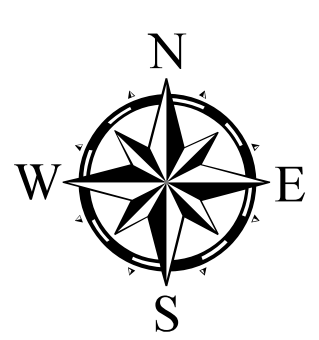


Operations



**Terwilliger
OR-WIF-180227**

Fire perimeter as of
09/21/2018, 1415 hrs
11,279 acres



- | | | | | |
|--|--|---|--|--|
| <ul style="list-style-type: none"> ▲ Footbridges ■ Road Block ✕ Closure ◆ Dip Site ● Drop Point ⊕ Helibase ⊙ Helispot Ⓜ Incident Command Post Ⓜ Internet Access | <ul style="list-style-type: none"> Ⓜ Mobile Weather Unit Ⓜ Pump Ⓜ Repeater Ⓜ Staging Area Ⓜ Water Source Ⓜ Water Tank Ⓜ Value at Risk Ⓜ Division Break | <ul style="list-style-type: none"> — Uncontrolled Fire Edge — Completed Line ⊘ Completed Dozer Line — Completed Hand Line — Road as Completed Line ⊘ Completed Burnout — Planned Fire Line — Escape Route — Powerlines | <ul style="list-style-type: none"> — State Highway — Emphasized Routes — Arterial Road — Collector Road — Local Road — Oregon Department of Forestry | <ul style="list-style-type: none"> — Oregon Department of State Lands — Private Industrial Ownership — Private Ownership — US Army Corps of Engineers — US Forest Service — Wilderness |
|--|--|---|--|--|

