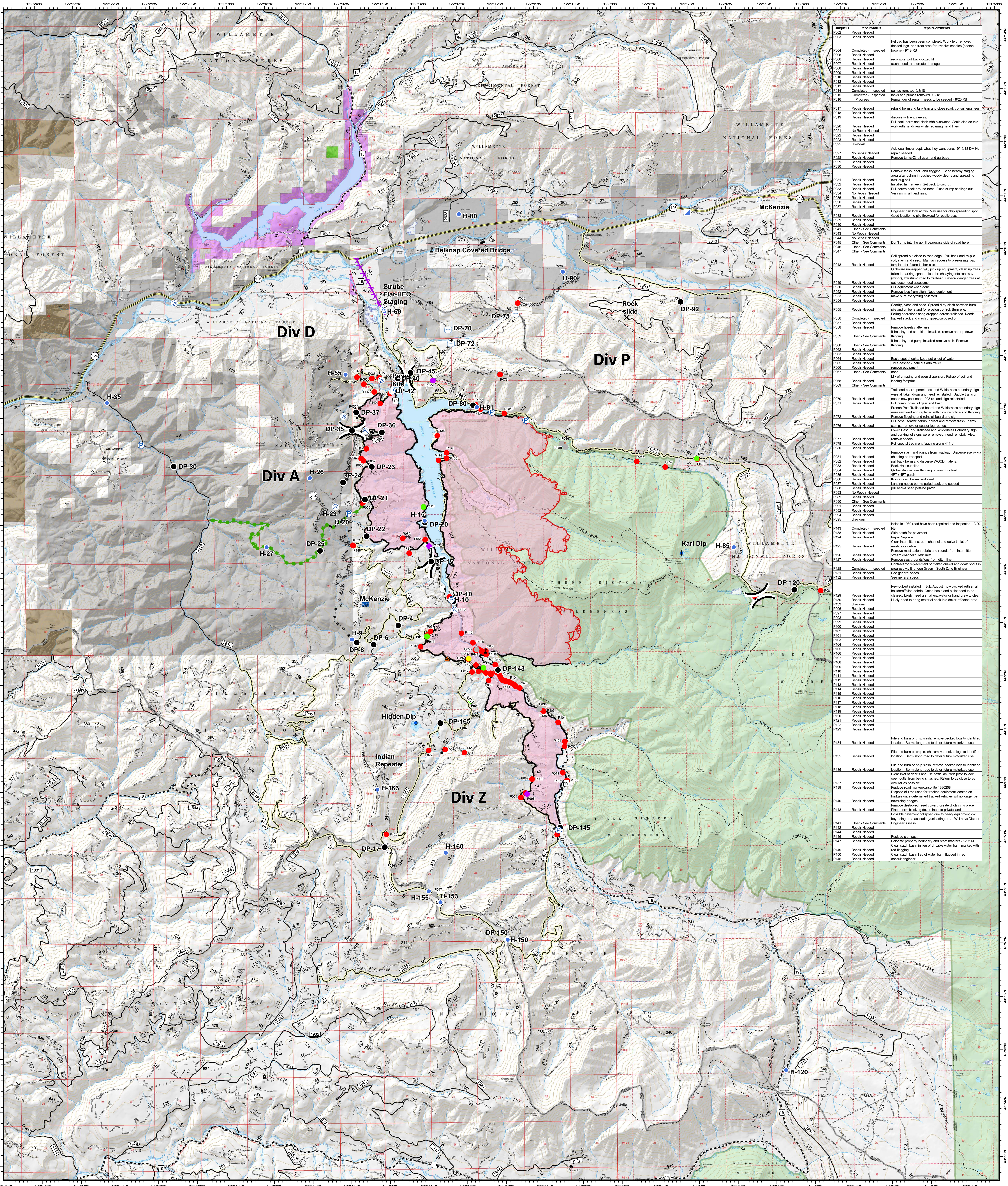


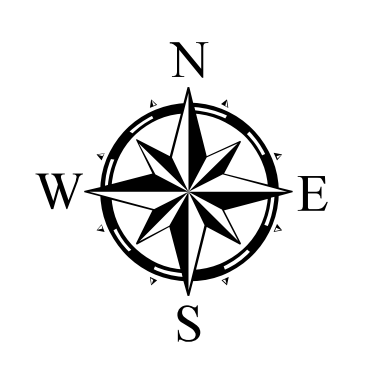
Repair - Points



Point ID	Repair Status	Repair Comments
DP-1	Repair Needed	Helped has been completed Work left: removed decked logs, and treat area for invasive species (scotch broom, 8/19/18)
DP-2	Repair Needed	reconnect, pull back down hill
DP-3	Repair Needed	stake, seed, and create drainage
DP-4	Repair Needed	
DP-5	Repair Needed	
DP-6	Repair Needed	
DP-7	Repair Needed	
DP-8	Repair Needed	
DP-9	Repair Needed	
DP-10	Repair Needed	
DP-11	Repair Needed	
DP-12	Repair Needed	
DP-13	Repair Needed	
DP-14	Completed - Inspected	curves removed 8/18/18
DP-15	Completed - Inspected	logs and stumps removed 8/18/18
DP-16	In Progress	Remainder of repair, needs to be seeded - 8/20/18
DP-17	Repair Needed	refill berm and tank trap and close road, consult engineer
DP-18	Repair Needed	
DP-19	Repair Needed	discuss with engineering
DP-20	Repair Needed	Pull back berm and slash with excavator. Could also do this work with handrow while repairing hand line
DP-21	Repair Needed	
DP-22	Repair Needed	
DP-23	Repair Needed	
DP-24	Repair Needed	
DP-25	Repair Needed	
DP-26	Repair Needed	
DP-27	Repair Needed	
DP-28	Repair Needed	
DP-29	Repair Needed	
DP-30	Repair Needed	
DP-31	Repair Needed	
DP-32	Repair Needed	
DP-33	Repair Needed	
DP-34	Repair Needed	
DP-35	Repair Needed	
DP-36	Repair Needed	
DP-37	Repair Needed	
DP-38	Repair Needed	
DP-39	Repair Needed	
DP-40	Repair Needed	
DP-41	Repair Needed	
DP-42	Repair Needed	
DP-43	Repair Needed	
DP-44	Repair Needed	
DP-45	Repair Needed	
DP-46	Repair Needed	
DP-47	Repair Needed	
DP-48	Repair Needed	
DP-49	Repair Needed	
DP-50	Repair Needed	
DP-51	Repair Needed	
DP-52	Repair Needed	
DP-53	Repair Needed	
DP-54	Repair Needed	
DP-55	Repair Needed	
DP-56	Repair Needed	
DP-57	Repair Needed	
DP-58	Repair Needed	
DP-59	Repair Needed	
DP-60	Repair Needed	
DP-61	Repair Needed	
DP-62	Repair Needed	
DP-63	Repair Needed	
DP-64	Repair Needed	
DP-65	Repair Needed	
DP-66	Repair Needed	
DP-67	Repair Needed	
DP-68	Repair Needed	
DP-69	Repair Needed	
DP-70	Repair Needed	
DP-71	Repair Needed	
DP-72	Repair Needed	
DP-73	Repair Needed	
DP-74	Repair Needed	
DP-75	Repair Needed	
DP-76	Repair Needed	
DP-77	Repair Needed	
DP-78	Repair Needed	
DP-79	Repair Needed	
DP-80	Repair Needed	
DP-81	Repair Needed	
DP-82	Repair Needed	
DP-83	Repair Needed	
DP-84	Repair Needed	
DP-85	Repair Needed	
DP-86	Repair Needed	
DP-87	Repair Needed	
DP-88	Repair Needed	
DP-89	Repair Needed	
DP-90	Repair Needed	
DP-91	Repair Needed	
DP-92	Repair Needed	
DP-93	Repair Needed	
DP-94	Repair Needed	
DP-95	Repair Needed	
DP-96	Repair Needed	
DP-97	Repair Needed	
DP-98	Repair Needed	
DP-99	Repair Needed	
DP-100	Repair Needed	
DP-101	Repair Needed	
DP-102	Repair Needed	
DP-103	Repair Needed	
DP-104	Repair Needed	
DP-105	Repair Needed	
DP-106	Repair Needed	
DP-107	Repair Needed	
DP-108	Repair Needed	
DP-109	Repair Needed	
DP-110	Repair Needed	
DP-111	Repair Needed	
DP-112	Repair Needed	
DP-113	Repair Needed	
DP-114	Repair Needed	
DP-115	Repair Needed	
DP-116	Repair Needed	
DP-117	Repair Needed	
DP-118	Repair Needed	
DP-119	Repair Needed	
DP-120	Repair Needed	
DP-121	Repair Needed	
DP-122	Repair Needed	
DP-123	Repair Needed	
DP-124	Repair Needed	
DP-125	Repair Needed	
DP-126	Repair Needed	
DP-127	Repair Needed	
DP-128	Repair Needed	
DP-129	Repair Needed	
DP-130	Repair Needed	
DP-131	Repair Needed	
DP-132	Repair Needed	
DP-133	Repair Needed	
DP-134	Repair Needed	
DP-135	Repair Needed	
DP-136	Repair Needed	
DP-137	Repair Needed	
DP-138	Repair Needed	
DP-139	Repair Needed	
DP-140	Repair Needed	
DP-141	Repair Needed	
DP-142	Repair Needed	
DP-143	Repair Needed	
DP-144	Repair Needed	
DP-145	Repair Needed	
DP-146	Repair Needed	
DP-147	Repair Needed	
DP-148	Repair Needed	
DP-149	Repair Needed	
DP-150	Repair Needed	
DP-151	Repair Needed	
DP-152	Repair Needed	
DP-153	Repair Needed	
DP-154	Repair Needed	
DP-155	Repair Needed	
DP-156	Repair Needed	
DP-157	Repair Needed	
DP-158	Repair Needed	
DP-159	Repair Needed	
DP-160	Repair Needed	
DP-161	Repair Needed	
DP-162	Repair Needed	
DP-163	Repair Needed	
DP-164	Repair Needed	
DP-165	Repair Needed	

**Terwilliger
OR-WIF-180227**

Fire perimeter as of
09/21/2018, 1415 hrs
11,279 acres



- ▲ Footbridge
- Road Block
- X Closure
- + Dip Site
- Drop Point
- ⊕ Helibase
- ⊕ Helispot
- ⊕ Incident Command Post
- ⊕ Internet Access
- P Mobile Weather Unit
- P Pump
- R Repeater
- S Staging Area
- W Water Source
- W Water Tank
- V Value at Risk
-) Division Break
- Uncontrolled Fire Edge
- Completed Line
- - - Completed Dozer Line
- - - Completed Hand Line
- - - Road as Completed Line
- - - Completed Burnout
- - - Planned Fire Line
- - - Escape Route
- - - Powerlines
- State Highway
- Emphasized Routes
- Arterial Road
- Collector Road
- Local Road
- Oregon Department of Forestry
- Oregon Department of State Lands
- Private Industrial Ownership
- Private Ownership
- US Army Corps of Engineers
- US Forest Service
- Wilderness

0 0.75 1.5 3 Miles

NAD83 UTM10N