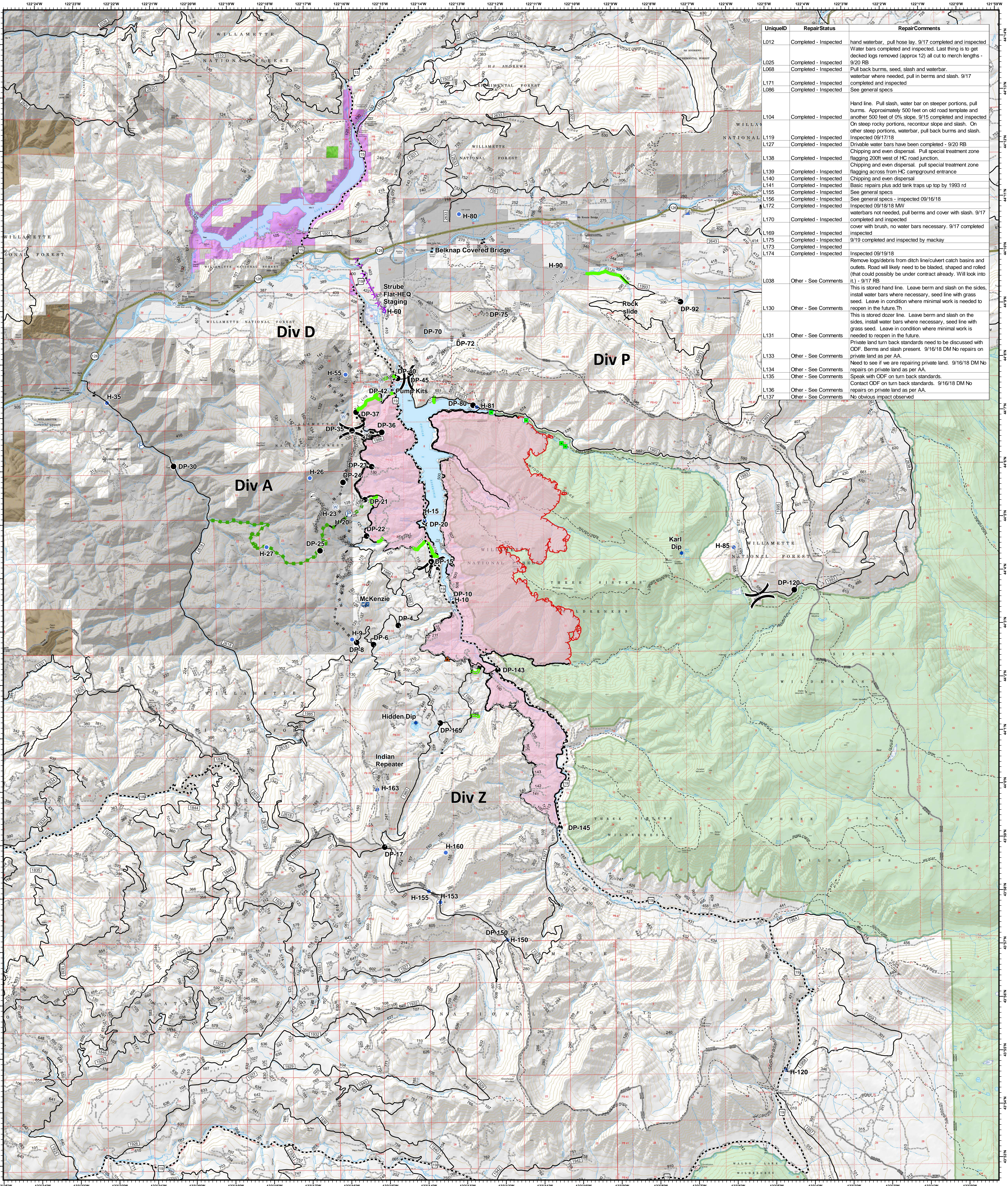


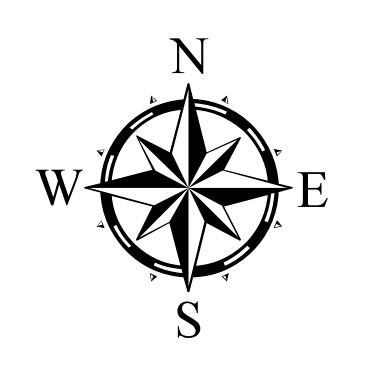
# Repair - Completed & Other



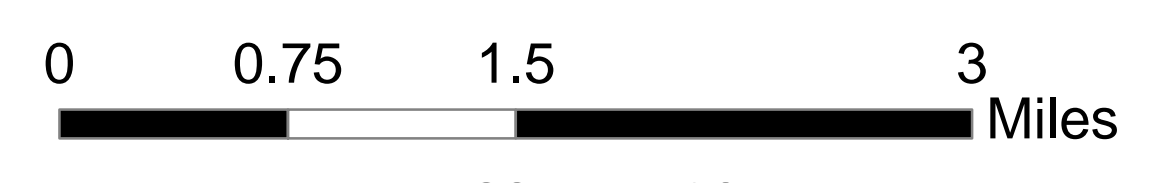
UniqueID	Repair Status	Repair Comments
L012	Completed - Inspected	hand waterbar, pull hose lay. 9/17 completed and inspected. Water bars completed and inspected. Last thing is to get decked logs removed (approx 12) all cut to merch lengths - 9/20 RB
L025	Completed - Inspected	Pull back burns, seed, slash and waterbar.
L068	Completed - Inspected	waterbar where needed, pull in berms and slash. 9/17 completed and inspected
L171	Completed - Inspected	See general specs
L086	Completed - Inspected	
L104	Completed - Inspected	Hand line. Pull slash, water bar on steeper portions, pull burms. Approximately 500 feet on old road template and another 500 feet of 0% slope. 9/15 completed and inspected. On steep rocky portions, recontour slope and slash. On other steep portions, waterbar, pull back burms and slash.
L119	Completed - Inspected	Inspected 09/17/18
L127	Completed - Inspected	Driveable water bars have been completed - 9/20 RB
L138	Completed - Inspected	Chipping and even dispersal. Pull special treatment zone flagging 200ft west of HC road junction.
L139	Completed - Inspected	Chipping across from HC campground entrance
L140	Completed - Inspected	Chipping and even dispersal
L141	Completed - Inspected	Basic repairs plus add tank traps up top by 1993 rd
L155	Completed - Inspected	See general specs
L156	Completed - Inspected	See general specs - inspected 09/16/18
L172	Completed - Inspected	Inspected 09/18/18 MM
L170	Completed - Inspected	waterbars not needed, pull burms and cover with slash. 9/17 completed and inspected
L169	Completed - Inspected	cover with brush, no water bars necessary. 9/17 completed and inspected
L175	Completed - Inspected	9/19 completed and inspected by mackay
L173	Completed - Inspected	
L174	Completed - Inspected	Inspected 09/19/18
L038	Other - See Comments	Remove logs/debris from ditch line/culvert catch basins and outlets. Road will likely need to be bladed, shaped and rolled (that could possibly be under contract already. Will look into it) - 9/17 RB
L130	Other - See Comments	This is stored hand line. Leave berm and slash on the sides, install water bars where necessary, seed line with grass seed. Leave in condition where minimal work is needed to reopen in the future. Th
L131	Other - See Comments	This is stored dozer line. Leave berm and slash on the sides, install water bars where necessary, seed line with grass seed. Leave in condition where minimal work is needed to reopen in the future.
L133	Other - See Comments	Private land turn back standards need to be discussed with ODF. Berms and slash present. 9/16/18 DM No repairs on private land as per AA.
L134	Other - See Comments	Need to see if we are repairing private land. 9/16/18 DM No repairs on private land as per AA.
L135	Other - See Comments	Speak with ODF on turn back standards.
L136	Other - See Comments	Contact ODF on turn back standards. 9/16/18 DM No repairs on private land as per AA.
L137	Other - See Comments	No obvious impact observed

**Terwilliger**  
**OR-WIF-180227**

Fire perimeter as of  
09/21/2018, 1415 hrs  
11,279 acres



- ▲ Footbridges
- Road Block
- X Closure
- + Dip Site
- Drop Point
- ⊕ Helibase
- ⊙ Helispot
- Ⓜ Incident Command Post
- Ⓜ Internet Access
- P Mobile Weather Unit
- P Pump
- R Repeater
- S Staging Area
- W Water Source
- W Water Tank
- V Value at Risk
- ) Division Break
- Uncontrolled Fire Edge
- Completed Line
- - - Completed Dozer Line
- - - Completed Hand Line
- - - Road as Completed Line
- - - Completed Burnout
- - - Planned Fire Line
- - - Escape Route
- - - Powerlines
- State Highway
- Emphasized Routes
- Arterial Road
- Collector Road
- Local Road
- Oregon Department of Forestry
- Private Department of State Lands
- Private Industrial Ownership
- Private Ownership
- US Army Corps of Engineers
- US Forest Service
- Wilderness



NAD83 UTM10N

