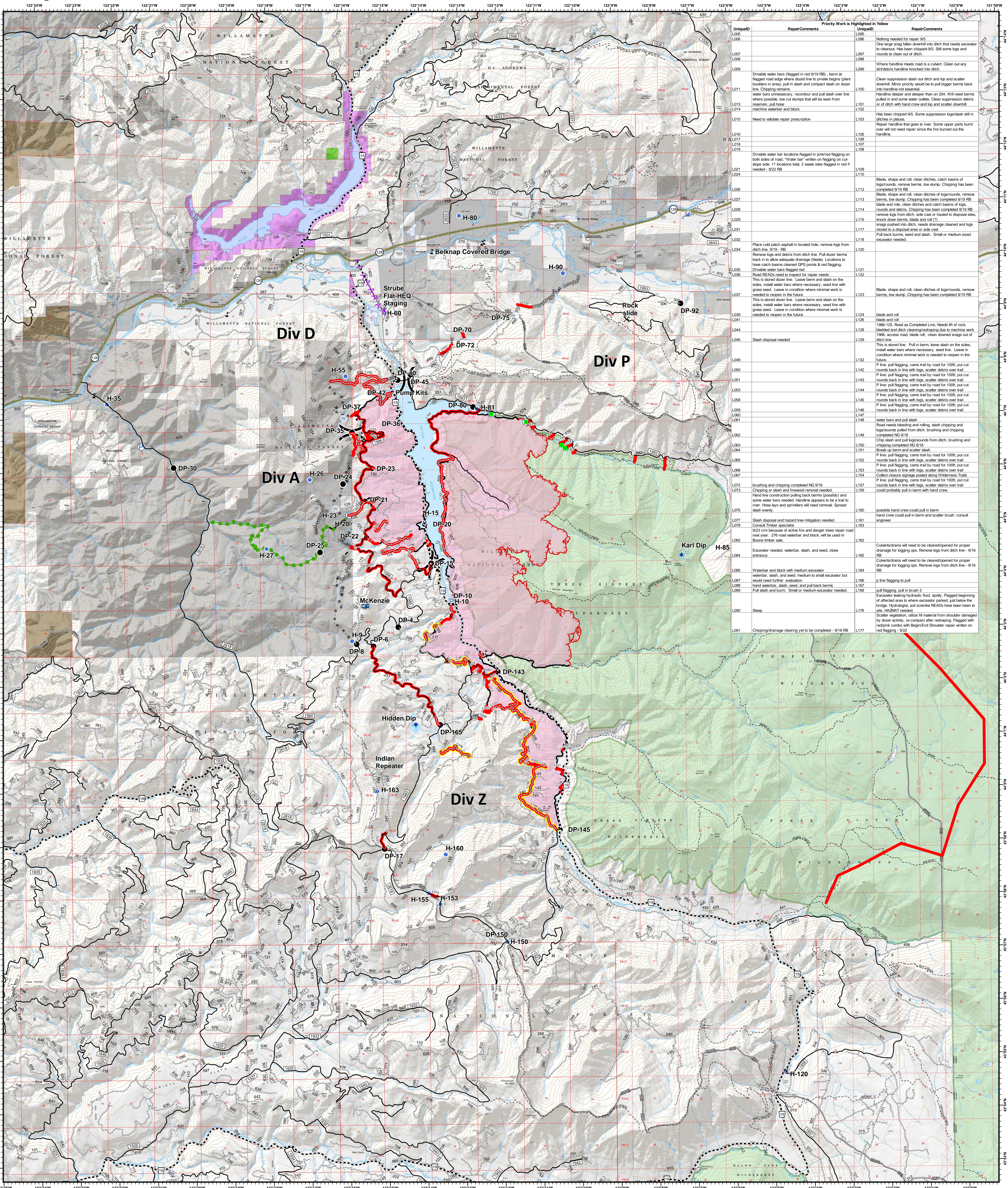


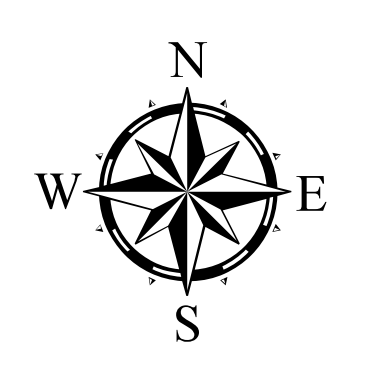
# Repair - Needed



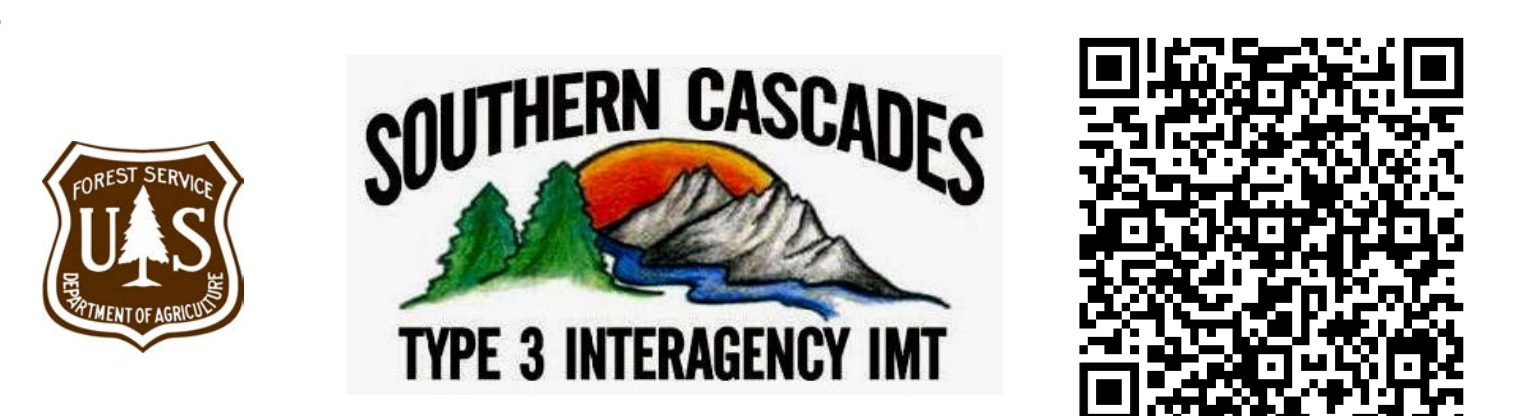
UniqueID	RepairComments	UniqueID	RepairComments
L005		L095	Nothing needed for repair 9/5
L006		L096	One large snag fallen down into ditch that needs excavator to clearout. Has been chipped 9/5. Still some logs and rounds to clean out of ditch.
L007		L097	
L008		L098	
L009	Drivable water bars (flagged in red 9/19 RB) berm at flagged road edge where dozer line to private begins (plant boulders in area); pull in slash and compact slash on dozer line. Chipping remains	L099	Where handline meets road is a culvert. Clean out any dirt/debris handline knocked into ditch
L010	water bars unnecessary, recontour and pull slash over line where possible, low cut stumps that will be seen from reservoir, pull hose	L100	Clean suppression slash out ditch and top and scatter debris. Minor priority would be to pull bigger berms back into handline-root essential.
L011	machine waterbar and block.	L101	Handline deeper and steeper than on 204. Will need berms pulled in and some water outlets. Clean suppression ruts or of ditch with hand crew and log and scatter downhills
L012		L102	
L013		L103	Has been chipped 9/5. Some suppression logs still in ditches in places
L014		L104	Repair handline that goes to river. Some upper parts burnt over will not need repair since the line burned out the handline.
L015	Need to validate repair prescription	L105	
L016		L106	
L017		L107	
L018		L108	
L019		L109	
L020	Drivable water bar locations flagged in pink/red flagging on both sides of road. "Water bar" written on flagging on out slope side. 11 locations total, 2 water sites flagged in red if needed - 9/22 RB	L110	
L021		L111	Blade, shape and roll, clean ditches, catch basins of logs/rounds, remove berms, low stumps. Chipping has been completed 9/19 RB
L022		L112	Blade, shape and roll, clean ditches of logs/rounds, remove berms, low stumps. Chipping has been completed 9/19 RB
L023		L113	Blade and roll, clean ditches and catch basins of logs, rounds and debris. Chipping has been completed 9/19 RB
L024		L114	remove logs from ditch, side cast or haul to disposal site, knock down berms, blade and roll (?)
L025		L115	snag pushed into ditch, needs drainage cleaned and logs moved to a disposal area or side cast
L026		L116	Pull back berms, seed and slash. Small or medium sized excavator needed
L027		L117	
L028		L118	
L029		L119	
L030		L120	
L031	Place cold patch asphalt in located hole, remove logs from ditch line. 9/19 RB	L121	
L032		L122	
L033	Remove logs and debris from ditch line. Pull dozer berms back in to allow adequate drainage (blade). Locations to have catch basins cleared (DPS points & red flagging). Drivable water bars flagged red	L123	Blade, shape and roll, clean ditches of logs/rounds, remove berms, low stumps. Chipping has been completed 9/19 RB
L034	Road READs need to inspect for repair needs	L124	blade and roll
L035	This is stored dozer line. Leave berm and slash on the sides, install water bars where necessary, seed line with grass seed. Leave in condition where minimal work is needed to reopen in the future.	L125	blade and roll
L036	This is stored dozer line. Leave berm and slash on the sides, install water bars where necessary, seed line with grass seed. Leave in condition where minimal work is needed to reopen in the future.	L126	1986 access road, blade roll, clean downed snags out of ditch line
L037		L127	This is stored line. Pull in berm, leave slash on the sides, install water bars where necessary, seed line. Leave in condition where minimal work is needed to reopen in the future.
L038		L128	P line, pull flagging, came trail by road for 100ft, put out rounds back in line with logs, scatter debris over trail
L039		L129	P line, pull flagging, came trail by road for 100ft, put out rounds back in line with logs, scatter debris over trail
L040		L130	P line, pull flagging, came trail by road for 100ft, put out rounds back in line with logs, scatter debris over trail
L041		L131	P line, pull flagging, came trail by road for 100ft, put out rounds back in line with logs, scatter debris over trail
L042		L132	P line, pull flagging, came trail by road for 100ft, put out rounds back in line with logs, scatter debris over trail
L043		L133	P line, pull flagging, came trail by road for 100ft, put out rounds back in line with logs, scatter debris over trail
L044		L134	P line, pull flagging, came trail by road for 100ft, put out rounds back in line with logs, scatter debris over trail
L045		L135	P line, pull flagging, came trail by road for 100ft, put out rounds back in line with logs, scatter debris over trail
L046		L136	P line, pull flagging, came trail by road for 100ft, put out rounds back in line with logs, scatter debris over trail
L047		L137	P line, pull flagging, came trail by road for 100ft, put out rounds back in line with logs, scatter debris over trail
L048		L138	P line, pull flagging, came trail by road for 100ft, put out rounds back in line with logs, scatter debris over trail
L049		L139	P line, pull flagging, came trail by road for 100ft, put out rounds back in line with logs, scatter debris over trail
L050		L140	P line, pull flagging, came trail by road for 100ft, put out rounds back in line with logs, scatter debris over trail
L051		L141	P line, pull flagging, came trail by road for 100ft, put out rounds back in line with logs, scatter debris over trail
L052		L142	P line, pull flagging, came trail by road for 100ft, put out rounds back in line with logs, scatter debris over trail
L053		L143	P line, pull flagging, came trail by road for 100ft, put out rounds back in line with logs, scatter debris over trail
L054		L144	P line, pull flagging, came trail by road for 100ft, put out rounds back in line with logs, scatter debris over trail
L055		L145	P line, pull flagging, came trail by road for 100ft, put out rounds back in line with logs, scatter debris over trail
L056		L146	P line, pull flagging, came trail by road for 100ft, put out rounds back in line with logs, scatter debris over trail
L057		L147	P line, pull flagging, came trail by road for 100ft, put out rounds back in line with logs, scatter debris over trail
L058		L148	P line, pull flagging, came trail by road for 100ft, put out rounds back in line with logs, scatter debris over trail
L059		L149	water bars and pull slash
L060		L150	Road needs bleeding and rolling, slash chipping and logs/rounds pulled from ditch, brushing and chipping completed 9/19 RB
L061		L151	Break up berm and scatter slash
L062		L152	P line, pull flagging, came trail by road for 100ft, put out rounds back in line with logs, scatter debris over trail
L063		L153	P line, pull flagging, came trail by road for 100ft, put out rounds back in line with logs, scatter debris over trail
L064		L154	P line, pull flagging, came trail by road for 100ft, put out rounds back in line with logs, scatter debris over trail
L065		L155	P line, pull flagging, came trail by road for 100ft, put out rounds back in line with logs, scatter debris over trail
L066		L156	P line, pull flagging, came trail by road for 100ft, put out rounds back in line with logs, scatter debris over trail
L067		L157	P line, pull flagging, came trail by road for 100ft, put out rounds back in line with logs, scatter debris over trail
L068		L158	P line, pull flagging, came trail by road for 100ft, put out rounds back in line with logs, scatter debris over trail
L069		L159	P line, pull flagging, came trail by road for 100ft, put out rounds back in line with logs, scatter debris over trail
L070		L160	possible hand crew could pull in berm
L071		L161	hand crew could pull in berm and scatter brush, consult engineer
L072	brushing and chipping completed 9/19 RB	L162	
L073	Chipping or slash and firewood removal needed	L163	
L074	Hand line construction pulling back berms (possibly) and some water bars needed. Handline appears to be a trail to river. Hole logs and stumps will need removal. Spread slash evenly.	L164	
L075		L165	
L076		L166	
L077	Slash disposal and hazard tree mitigation needed.	L167	
L078	Consult Timber specialist	L168	
L079	923 m because of active fire and danger trees repair road next year. 276 road waterbar and block, will be used in Boone timber sale.	L169	
L080		L170	
L081		L171	
L082		L172	
L083		L173	
L084	Excavator needed, waterbar, slash, and seed, close entrance.	L174	
L085		L175	
L086	Waterbar and block with medium excavator	L176	
L087	waterbar, slash, and seed, medium to small excavator but would need further evaluation	L177	
L088	hand waterbar, slash, seed, and pull back berms		
L089	Pull slash and berms. Small or medium excavator needed.		
L090			
L091			
L092			
L093			
L094			
L095			
L096			
L097			
L098			
L099			
L100			
L101			
L102			
L103			
L104			
L105			
L106			
L107			
L108			
L109			
L110			
L111			
L112			
L113			
L114			
L115			
L116			
L117			
L118			
L119			
L120			
L121			
L122			
L123			
L124			
L125			
L126			
L127			
L128			
L129			
L130			
L131			
L132			
L133			
L134			
L135			
L136			
L137			
L138			
L139			
L140			
L141			
L142			
L143			
L144			
L145			
L146			
L147			
L148			
L149			
L150			
L151			
L152			
L153			
L154			
L155			
L156			
L157			
L158			
L159			
L160			
L161			
L162			
L163			
L164			
L165			
L166			
L167			
L168			
L169			
L170			
L171			
L172			
L173			
L174			
L175			
L176			
L177			

**Terwilliger**  
**OR-WIF-180227**

Fire perimeter as of  
09/21/2018, 1415 hrs  
11,279 acres



- ▲ Footbridge
- Road Block
- X Closure
- + Dip Site
- Drop Point
- ⊕ Helibase
- ⊕ Helispot
- ⊕ Incident Command Post
- ⊕ Internet Access
- P Mobile Weather Unit
- P Pump
- R Repeater
- R Staging Area
- R Water Source
- R Water Tank
- R Value at Risk
- R Division Break
- Uncontrolled Fire Edge
- Completed Line
- Completed Dozer Line
- Completed Hand Line
- Road as Completed Line
- Completed Burnout
- Planned Fire Line
- Escape Route
- Powerlines
- State Highway
- Emphasized Routes
- Arterial Road
- Collector Road
- Local Road
- Oregon Department of Forestry
- Oregon Department of State Lands
- Private Industrial Ownership
- Private Ownership
- US Army Corps of Engineers
- US Forest Service
- Wilderness



0 0.75 1.5 3 Miles  
NAD83 UTM10N