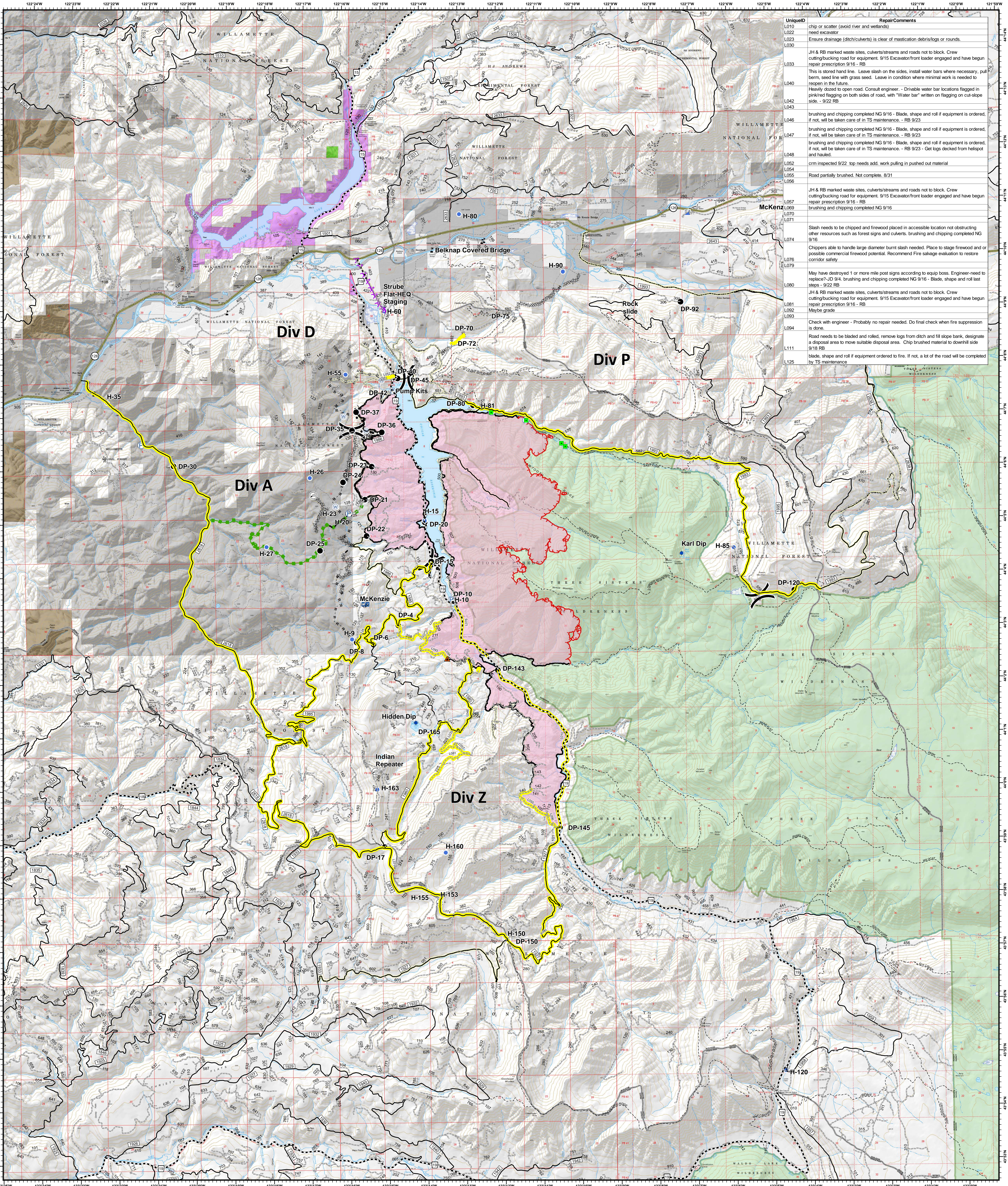
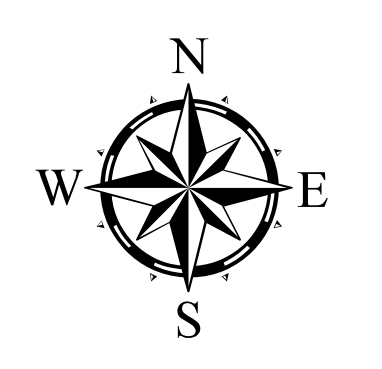


Repair - In Progress



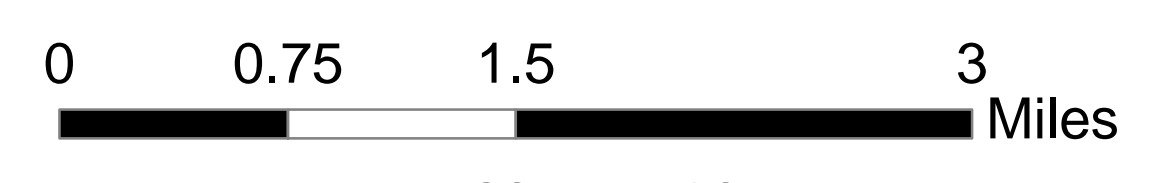
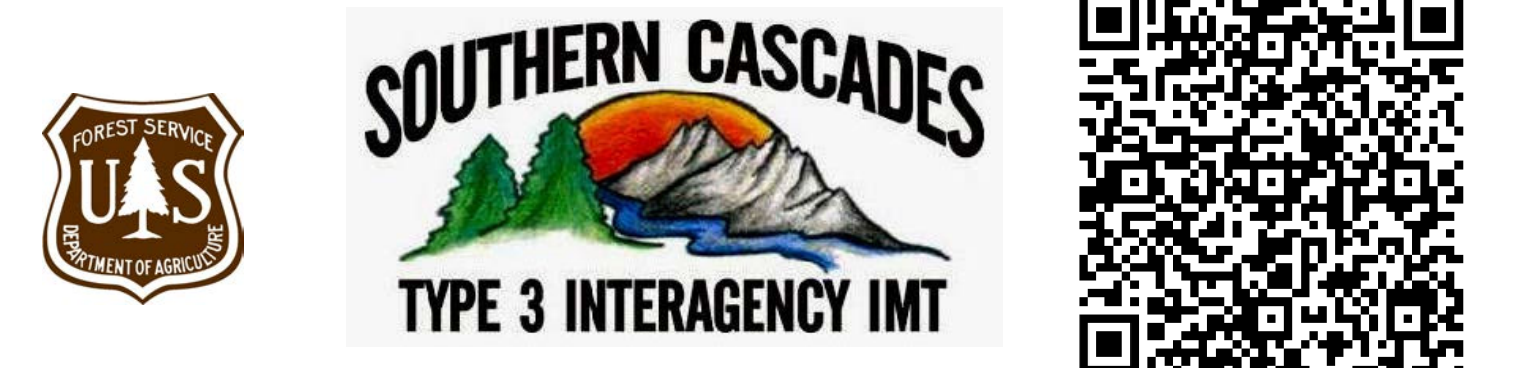
Uniqued	Repair Comments
L010	chip or scatter (avoid river and wetlands) need excavator
L022	Ensure drainage (ditch/culverts) is clear of mastication debris/logs or rounds.
L030	JH & RB marked waste sites, culverts/streams and roads not to block. Crew cutting/bucking road for equipment. 9/15 Excavator/front loader engaged and have begun repair prescription 9/16 - RB
L033	This is stored hand line. Leave slash on the sides, install water bars where necessary, pull berm, seed line with grass seed. Leave in condition where minimal work is needed to happen in the future.
L040	Heavily staked to open road. Consult engineer. - Drivable water bar locations flagged in pink/red flagging on both sides of road, with "Water bar" written on flagging on cut-slope side. - 9/22 RB
L042	brushing and chipping completed NG 9/16 - Blade, shape and roll if equipment is ordered, if not, will be taken care of in TS maintenance. - RB 9/23
L043	brushing and chipping completed NG 9/16 - Blade, shape and roll if equipment is ordered, if not, will be taken care of in TS maintenance. - RB 9/23
L046	brushing and chipping completed NG 9/16 - Blade, shape and roll if equipment is ordered, if not, will be taken care of in TS maintenance. - RB 9/23 - Get logs decked from helispot and hauled.
L052	crm inspected 9/22 top needs add. work pulling in pushed out material
L054	Road partially brushed. Not complete. 8/31
L055	JH & RB marked waste sites, culverts/streams and roads not to block. Crew cutting/bucking road for equipment. 9/15 Excavator/front loader engaged and have begun repair prescription 9/16 - RB
L057	brushing and chipping completed NG 9/16
L059	
L070	Slash needs to be chipped and firewood placed in accessible location not obstructing other resources such as forest signs and culverts, brushing and chipping completed NG 9/16
L071	
L074	Operators able to handle large diameter burnt slash needed. Place to stage firewood and/or possible commercial firewood potential. Recommend Fire salvage evaluation to restore corridor safety
L076	
L079	
L080	May have destroyed 1 or more mile post signs according to equip boss. Engineer-need to replace. JD 9/14, brushing and chipping completed NG 9/16 - Blade, shape and roll last steps. 9/22 RB
L081	JH & RB marked waste sites, culverts/streams and roads not to block. Crew cutting/bucking road for equipment. 9/15 Excavator/front loader engaged and have begun repair prescription 9/16 - RB
L082	May be grade
L083	
L094	Check with engineer - Probably no repair needed. Do final check when fire suppression is done.
L111	Road needs to be bladed and rolled, remove logs from ditch and fill slope bank, designate a disposal area to move suitable disposal area. Chip brushed material to downhill side
L125	blade, shape and roll if equipment ordered to fire. If not, a lot of the road will be completed by TS maintenance

Terwilliger
OR-WIF-180227



Fire perimeter as of
09/21/2018, 1415 hrs
11,279 acres

- ▲ Footbridges
- Road Block
- X Closure
- + Dip Site
- Drop Point
- ⊕ Helibase
- ⊕ Helispot
- ⊕ Incident Command Post
- ⊕ Internet Access
- P Mobile Weather Unit
- P Pump
- R Repeater
- S Staging Area
- W Water Source
- W Water Tank
- V Value at Risk
-) Division Break
- Uncontrolled Fire Edge
- Completed Line
- - - Completed Dozer Line
- - - Completed Hand Line
- - - Road as Completed Line
- - - Completed Burnout
- - - Planned Fire Line
- - - Escape Route
- - - Powerlines
- State Highway
- Emphasized Routes
- Arterial Road
- Collector Road
- Local Road
- Oregon Department of Forestry
- Private Department of State Lands
- Private Industrial Ownership
- Private Ownership
- US Army Corps of Engineers
- US Forest Service
- Wilderness



NAD83 UTM10N

