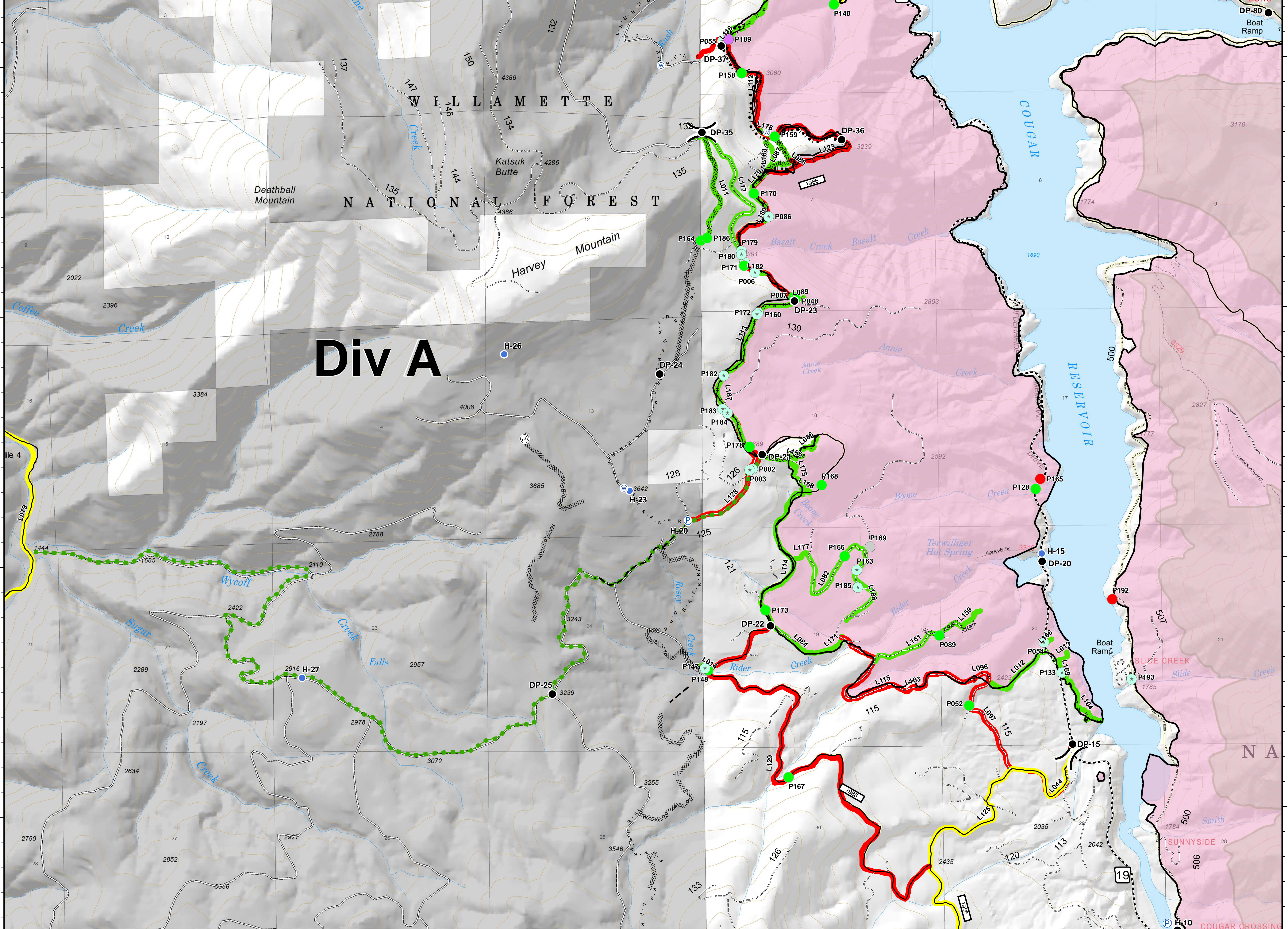


Div A/D - Repair Status

UniqueID	Comments	RepairStatus	RepairComments
P002	log landing, clearing	District Repair	
P003	Needs repair prescription	District Repair	
P006	old rock pit, dozed open	District Repair	
P054	burned guard rail post	District Repair	recontour, pull back dozed fill
P055	Landing that is used for log decks and processing. Also used for staging / drop point. 3-4 Mule train load of fire WOOD or pulp logs.	District Repair	Scarify, slash and seed. Spread dirty slash between burn pile and timber stand for erosion control. Burn pile.
P085	Dozer caused Asphalt FAILURE needs patch	District Repair	4FT x 4FT patch in asphalt. Dozer caused failure. Task order, Kenny Gabriel
P086	Knock down berms and seed	District Repair	Knock down berms and seed
P087	Landing needs berms pulled back and seeded	District Repair	Landing needs berms pulled back and seeded
P133		District Repair	
P147	Property boundary markers damaged during dozer line construction	District Repair	Relocate property boundary and reset markers - 9/22 RB
P160	Large diameter merch logs need to be cut to length then hauled out - 9/24 RB	District Repair	Large diameter merch logs need to be cut to length then hauled out - 9/24 RB
P163	Repair with excavator	District Repair	Excavator needed to repair burnout in road bed. Excavate and re-compact - 9/25 RB
P165	Replace damaged sign post - burnt up	Repair Needed	Replace damaged sign post - burnt up. Rough Road an 10 MPH sign in good condition
P172	Harvester damaged MP 5 carsonite	District Repair	MP 5 carsonite needs to be replaced - 9/28 RB
P174	Take to dump	District Repair	Haul tires and destroyed culvert to dump
P179		District Repair	
P180		District Repair	
P182		District Repair	
P183		District Repair	
P184		District Repair	
P185		District Repair	Trees felled by dozer need to be removed from ditch
P192	Dispersed use site burned over and damaged. Barriers moved. Replace barriers. Seed burned area. Repair site.	Repair Needed	
P193	Damaged guard rail. Repair.	District Repair	
L036	Heavy brushing on north side of road. Brush piled on south side.	Repair Needed	Road READs need to inspect for repair needs
L088	short, steep dozed line	Repair Needed	hand waterbar, slash, seed, and pull back berms complete 10/1 LM
L090	Part of road is fire line.	Repair Needed	Nothing needed for repair 9/5
L097		Repair Needed	One large snag fallen downhill into ditch that needs excavator to cleanout. Has been chipped-9/5. Still some logs and rounds to clean out of ditch.
L103		Repair Needed	Has been chipped 9/5. Some suppression logs/slash still in ditches in places.
L112	brush break using harvester, road completed as line	Repair Needed	Blade, shape and roll, clean ditches, catch basins of logs/rounds, remove berms, low stump. Chipping has been completed 9/19 RB
L113	brush brake using harvester for road completed as line	Repair Needed	Blade, shape and roll, clean ditches of logs/rounds, remove berms, low stump. Chipping has been completed 9/19 RB ditch clean-up & berm removal complete 10/1 LM
L115	has been brushed, chipped and snagged	Repair Needed	remove logs from ditch, side cast or hauled to disposal sites, spread chips, knock down berms, blade and roll (?) priority spots flagged in pink or orange LM
L123	road 1986 heavily used as completed line	Repair Needed	Blade, shape and roll, clean ditches of logs/rounds, remove berms, low stump. Chipping has been completed 9/19 RB
L128	Brush break using Harvester	Repair Needed	1986-125, Road as Completed Line, Needs lift of rock, bladed and ditch cleaning/reshaping due to machine work - 9/12 JH. Also needs dozer berms knocked down/shoulder repair work-completed - 10/1 LM
L129	heavy use road for access	Repair Needed	1986, access road, blade roll, clean downed snags out of ditch line.

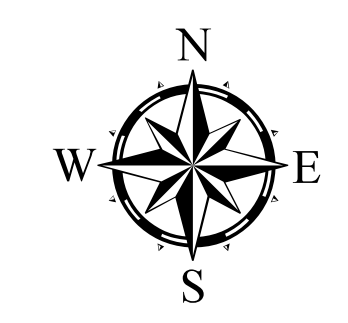
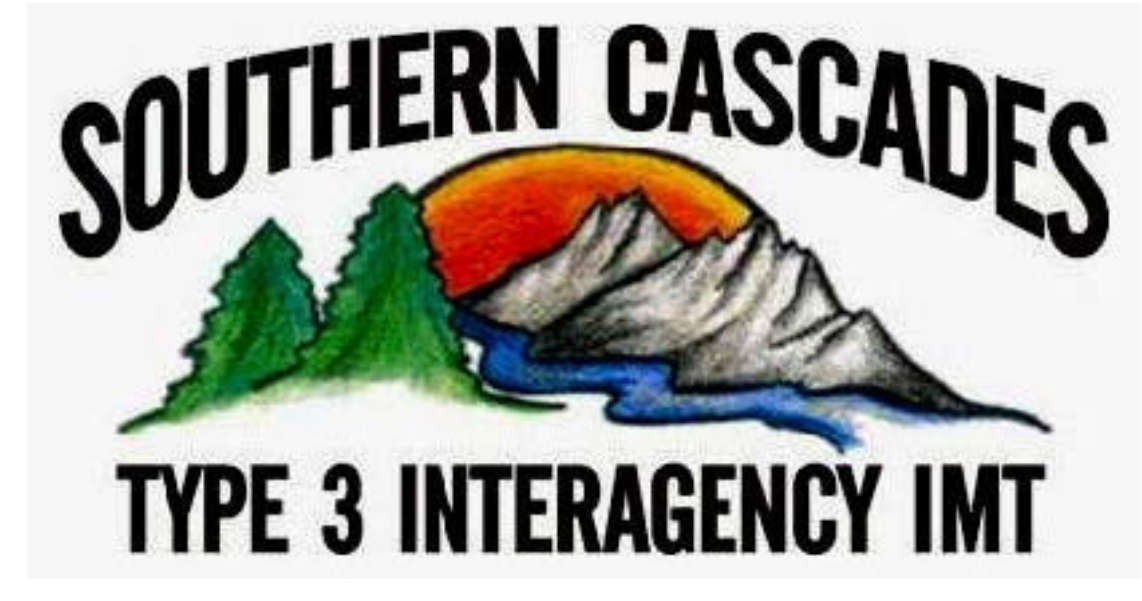


Terwilliger OR-WIF-180227

Fire perimeter as of 10/04/2018, 2227 hrs
11,555 acres

Updated: Oct 08, 2018 @ 21:13

- | | | | | |
|-------------------------|-------------------|--------------------------|------------------------|---------------------|
| Repair Status | ● Drop Point | ○ Water Tank | — Completed Line | — State Highway |
| ● District Repair | ● Helispot | ⚠ Value at Risk | ⊘ Completed Dozer Line | --- Arterial Road |
| ● Completed - Inspected | Ⓜ Internet Access | ⌋ Division Break | ⊘ Completed Hand Line | --- Collector Road |
| ● Repair Needed | Ⓟ Pump | ⊘ Road as Completed Line | ⊘ Completed Burnout | --- Local Road |
| ● Other - See Comments | Ⓢ Staging Area | ⊘ Planned Fire Line | ⊘ Escape Route | ■ Private Ownership |
| ● Unknown | Ⓣ Water Source | ⊘ Powerlines | ⊘ Wilderness | ■ US Forest Service |
| — Completed - Inspected | | | | |
| — In Progress | | | | |
| — Repair Needed | | | | |
| — Other - See Comments | | | | |



0 0.25 0.5 1 Miles

NAD83 UTM10N