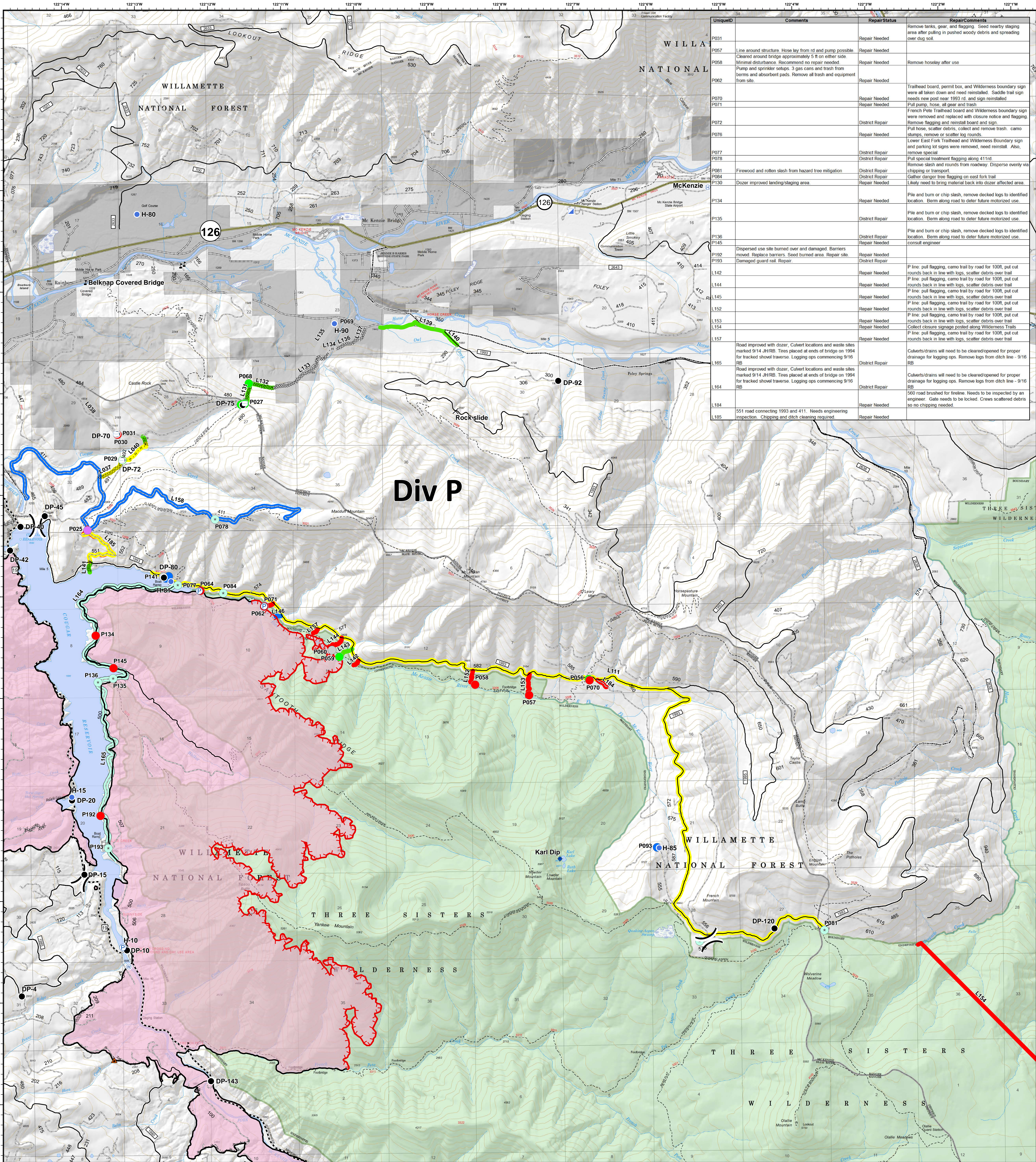


Div P - Repair Status



UniqueID	Comments	RepairStatus	RepairComments
P031		Repair Needed	Remove tanks, gear, and flagging. Seed nearby staging area after pulling in pushed woody debris and spreading over dug slot.
P057	Line around structure. Hose lay from rd and pump possible. Cleared around bridge approximately 5 ft on either side. Minimal disturbance. Recommend no repair needed.	Repair Needed	
P068	Pump and sprinkler setups. 3 gas cans and trash from berms and absorbent pads. Remove all trash and equipment from site.	Repair Needed	Remove hoses after use.
P062		Repair Needed	Trailhead board, permit box, and Wilderness boundary sign were all taken down and need reinstated. Saddle trail sign needs new post near 1993 rd. and sign reinstated.
P070		Repair Needed	Pull pump, hose, all gear and trash.
P071		Repair Needed	French Pole Trailhead board and Wilderness boundary sign were removed and replaced with closure notice and flagging. Remove flagging and reinstall board and sign.
P072		District Repair	
P076		Repair Needed	Pull hose, scatter debris, collect and remove trash. Camo stumps, remove or scatter log rounds.
P077		District Repair	Lower East Fork Trailhead and Wilderness Boundary sign and parking lot signs were removed, need reinstal. Also, remove special.
P078		District Repair	Pull special treatment flagging along 411 rd.
P081	Firewood and rotten slash from hazard tree mitigation.	District Repair	Remove slash and rounds from roadway. Disperse evenly via chipping or transport.
P084		District Repair	Gather danger tree flagging on east fork trail.
P130	Dozer improved landing/staging area.	Repair Needed	Likely need to bring material back into dozer affected area.
P134		Repair Needed	Pile and burn or chip slash, remove decked logs to identified location. Berm along road to deter future motorized use.
P135		District Repair	Pile and burn or chip slash, remove decked logs to identified location. Berm along road to deter future motorized use.
P136		District Repair	Pile and burn or chip slash, remove decked logs to identified location. Berm along road to deter future motorized use.
P145		Repair Needed	Pile and burn or chip slash, remove decked logs to identified location. Berm along road to deter future motorized use.
P192	Dispersed use site burned over and damaged. Barriers moved. Replace barriers. Seed burned area. Repair site.	Repair Needed	
P193	Damaged guard rail. Repair.	District Repair	
L142		Repair Needed	P line: pull flagging, camo trail by road for 100ft, put cut rounds back in line with logs, scatter debris over trail.
L144		Repair Needed	P line: pull flagging, camo trail by road for 100ft, put cut rounds back in line with logs, scatter debris over trail.
L145		Repair Needed	P line: pull flagging, camo trail by road for 100ft, put cut rounds back in line with logs, scatter debris over trail.
L152		Repair Needed	P line: pull flagging, camo trail by road for 100ft, put cut rounds back in line with logs, scatter debris over trail.
L153		Repair Needed	P line: pull flagging, camo trail by road for 100ft, put cut rounds back in line with logs, scatter debris over trail.
L154		Repair Needed	Collect closure signage posted along Wilderness Trails.
L157		Repair Needed	P line: pull flagging, camo trail by road for 100ft, put cut rounds back in line with logs, scatter debris over trail.
L165	Road improved with dozer. Culvert locations and waste sites marked 914 JH/RB. Tires placed at ends of bridge on 1994 for tracked shovel traverse. Logging ops commencing 9/16 RB.	District Repair	Culverts/drains will need to be cleared/opened for proper drainage for logging ops. Remove logs from ditch line - 9/16 RB.
L164	Road improved with dozer. Culvert locations and waste sites marked 914 JH/RB. Tires placed at ends of bridge on 1994 for tracked shovel traverse. Logging ops commencing 9/16 RB.	District Repair	Culverts/drains will need to be cleared/opened for proper drainage for logging ops. Remove logs from ditch line - 9/16 RB.
L184	560 road brushed for fireline. Needs to be inspected by an engineer. Gate needs to be locked. Crews scattered debris so no chipping needed.	Repair Needed	
L185	551 road connecting 1993 and 411. Needs engineering inspection. Chipping and ditch cleaning required.	Repair Needed	

Terwilliger
OR-WIF-180227
 Fire perimeter as of
 10/04/2018, 2227 hrs
 11,555 acres

- Repair Status**
- District Repair
 - Completed - Inspected
 - Repair Needed
 - No Repair Needed
 - Other - See Comments
 - Unknown
 - Completed - Inspected
 - In Progress
 - Repair Needed
 - No Repair Needed
 - Other - See Comments
- Other Symbols**
- ▲ Impassable Road
 - × Closure
 - ◆ Dip Site
 - Drop Point
 - ⊕ Helibase
 - Helispot
 - ⚡ Incident Command Post
 - ⚡ Uncontrolled Fire Edge
 - ⊕ Pump
 - ⊕ Water Source
 - ⊕ Water Tank
 - ⊕ Value at Risk
 -) (Division Break
 - Completed Line
 - ⊘ Completed Dozer Line
 - Completed Hand Line
 - Road as Completed Line
 - Arterial Road
 - Collector Road
 - Local Road
 - State Highway
 - Private Ownership
 - US Forest Service

SOUTHERN CASCADES
TYPE 3 INTERAGENCY IMT

Scale: 0 0.5 1 2 Miles
 NAD83 UTM10N

Updated:
 Oct 08, 2018
 @ 2224