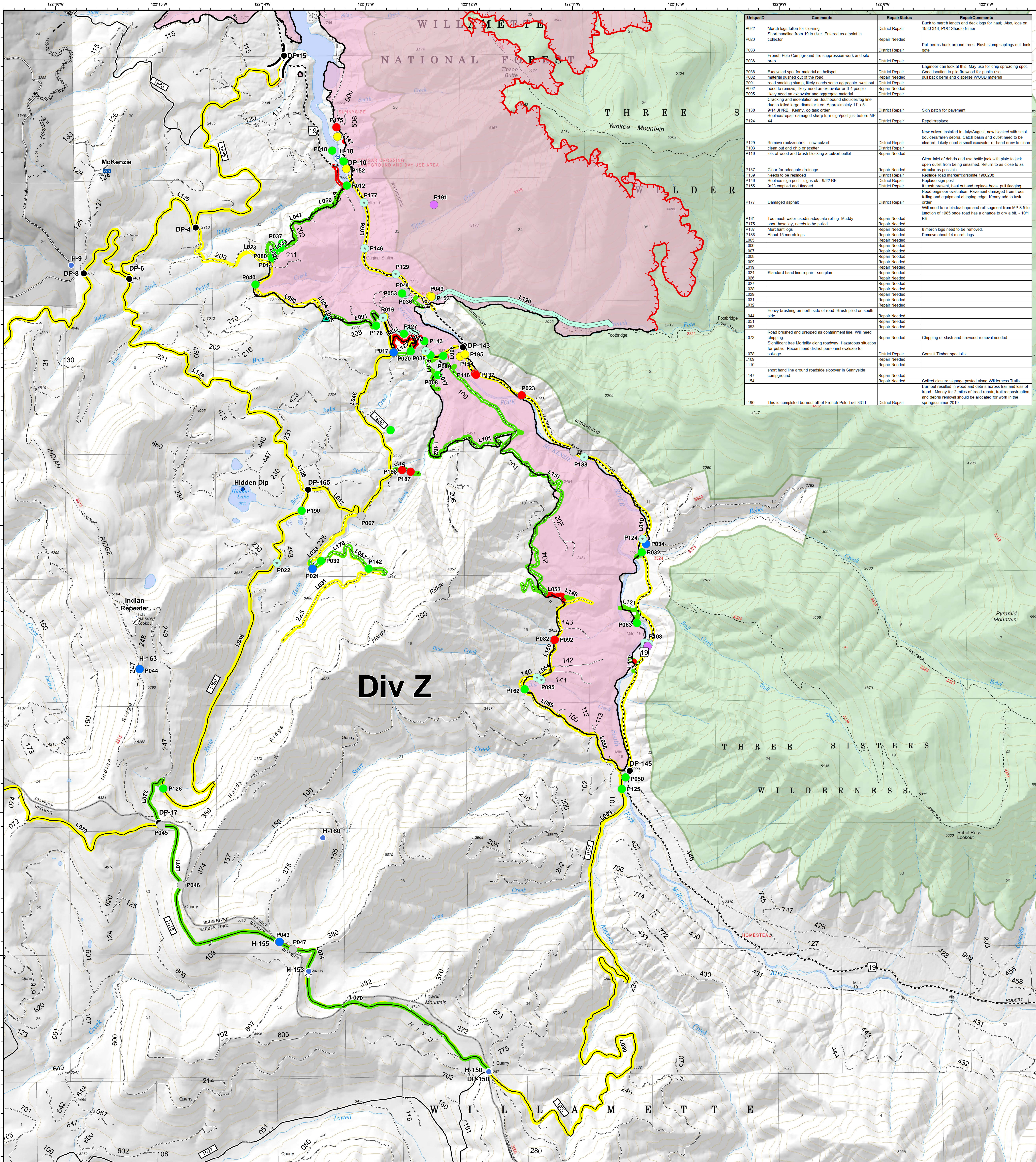


Div Z - Repair Status



UniqueID	Comments	RepairStatus	RepairComments
P022	Merch logs fallen for clearing	District Repair	Back to merch length and dock logs for haul. Also, logs on 1980 348. POC Shadie Nemer
P023	Short handline from 19 to river. Entered as a point in collector	Repair Needed	
P033	French Pete Campground fire suppression work and site prep	District Repair	
P036		District Repair	
P038	Excavated spot for material on helispot	District Repair	Engineer can look at this. May use for chip spreading spot
P039	medical patch out of the road	Repair Needed	Good location to pile firewood for public use
P091	road smoking stump, likely needs some aggregate, w/eshout need to remove, likely need an excavator or 3-4 people	District Repair	pull back berm and disperse WOOD material
P092	likely need an excavator and aggregate material	Repair Needed	
P095		District Repair	
P138	Cracking and indentation on Southbound shoulder/fog line due to felled large diameter tree. Approximately 11' x 5' - 9' x 14' JWBK. Kenny, do task order	District Repair	
P124	Replace/repair damaged sharp turn signpost just before MP 44	District Repair	Skin patch for pavement
P129	Remove rocks/debris - new culvert	District Repair	Repair/replace
P103	clean out and chip or scatter	District Repair	New culvert installed in July/August, now blocked with small boulders/fallen debris. Catch basin and outlet need to be cleared. Likely need a small excavator or hand crew to clean
P116	lots of wood and brush blocking a culvert outlet	Repair Needed	
P137	Clear for adequate drainage	Repair Needed	Clear inlet of debris and use bottle jack with plate to jack open outlet from being smashed. Return to as close to as circular as possible
P139	Needs to be replaced	District Repair	Replace road marker/corsonite 1980208
P148	Replace sign post - signs ok - 9/22 RB	District Repair	Replace sign post
P155	9/23 emptied and flagged	District Repair	if trash present, haul out and replace bags, pull flagging
P177	Damaged asphalt	District Repair	Need engineer evaluation. Pavement damaged from trees falling and equipment chipping edge, Kenny add to task order
P181	Too much water used/inadequate rolling. Muddy	Repair Needed	Will need to re-blade/shape and roll segment from MP 8.5 to junction of 1985 once road has a chance to dry a bit - 10/1 RB
P175	short hose lay, needs to be pulled	Repair Needed	
P187	Merchant logs	Repair Needed	8 merch logs need to be removed
P188	About 15 merch logs	Repair Needed	Remove about 14 merch logs
L005		Repair Needed	
L006		Repair Needed	
L007		Repair Needed	
L008		Repair Needed	
L009		Repair Needed	
L019		Repair Needed	
L024	Standard hand line repair - see plan	Repair Needed	
L027		Repair Needed	
L028		Repair Needed	
L029		Repair Needed	
L031		Repair Needed	
L032		Repair Needed	
L044	Heavy brushing on north side of road. Brush piled on south side	Repair Needed	
L051		Repair Needed	
L053		Repair Needed	
L073	Road brushed and propped as containment line. Will need chipping	Repair Needed	Chipping or slash and firewood removal needed
L078	Significant tree Mortality along roadway. Hazardous situation for public. Recommend district personnel evaluate for salvage	District Repair	Consult Timber specialist
L109		Repair Needed	
L110	short hand line around roadside slipover in Sunnyside	Repair Needed	
L147	campground	Repair Needed	
L154		Repair Needed	Collect closure signage posted along Wilderness Trails
L190	This is completed burnout off of French Pete Trail 3311	District Repair	Burnout resulted in wood and debris across trail and loss of trail. Money for 2 miles of trail repair, trail reconstruction, and debris removal should be allocated for work in the spring/summer 2019

Terwilliger OR-WIF-180227

Fire perimeter as of 10/04/2018, 2227 hrs
11,555 acres

Updated: Oct 08, 2018 @ 2238

- | | | | | |
|-----------------------|---------------------|----------------|------------------------|------------------------|
| Repair Status | Impassable Road | Repeater | Uncontrolled Fire Edge | Completed Hand Line |
| District Repair | Dip Site | Water Source | Completed Line | Road as Completed Line |
| Completed - Inspected | Drop Point | Value at Risk | Completed Dozer Line | Planned Fire Line |
| In Progress | Helispot | Division Break | | Arterial Road |
| Repair Needed | Internet Access | | | Collector Road |
| No Repair Needed | Mobile Weather Unit | | | Local Road |
| Other - See Comments | Pump | | | Private Ownership |
| Unknown | | | | US Forest Service |
| Completed - Inspected | | | | Wilderness |
| District Repair | | | | |
| In Progress | | | | |
| Repair Needed | | | | |

TYPE 3 INTERAGENCY IMT

NAD83 UTM10N