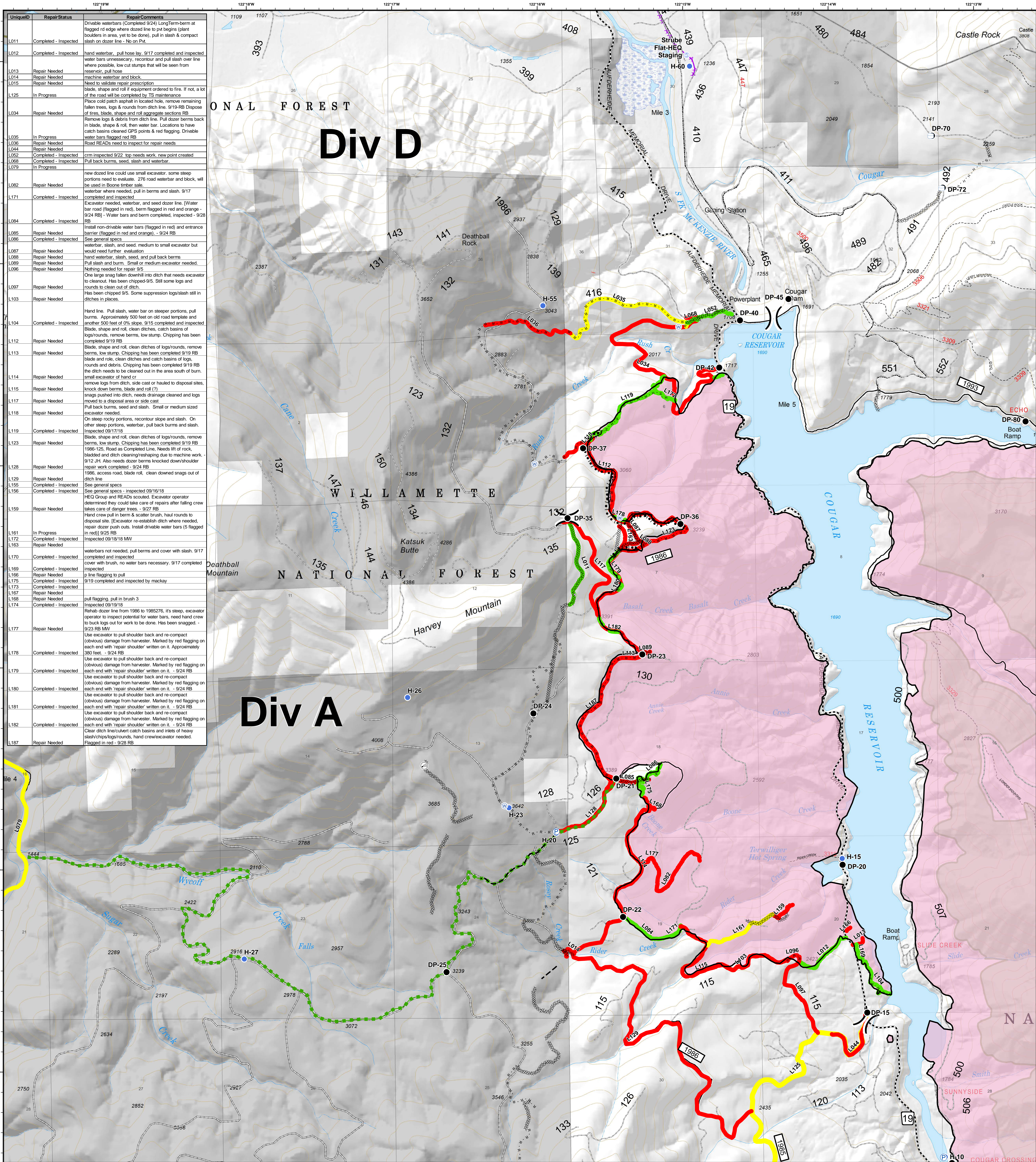


Div A/D - Line Repair Status



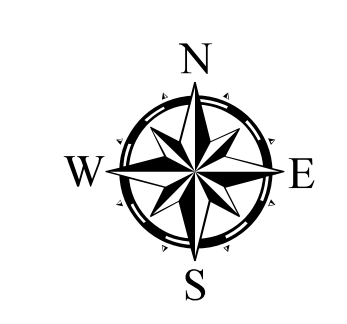
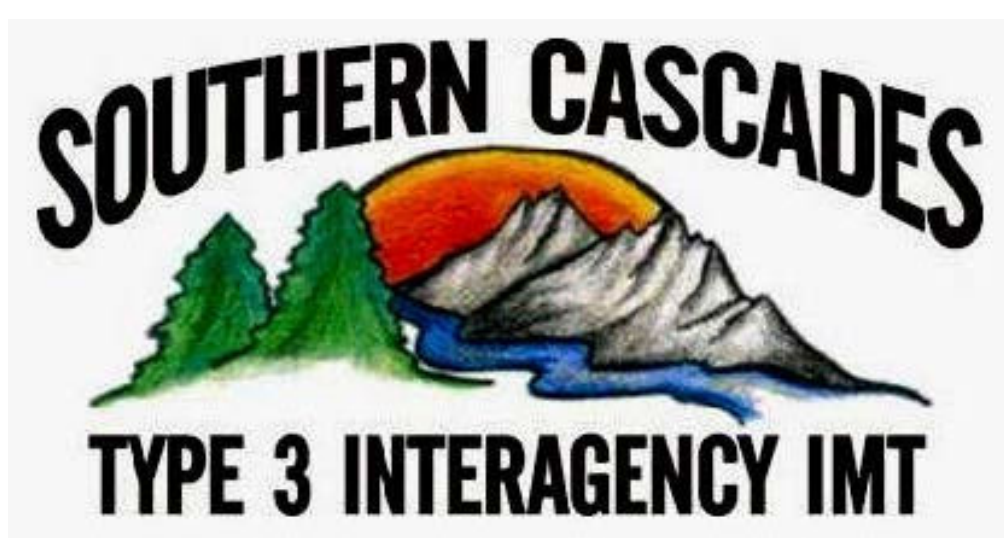
UniqueID	RepairStatus	RepairComments
L011	Completed - Inspected	Driveable waterbars (Completed 9/24) Long-Term berm at flagged rd edge where dozer line to put begins (plant boulders in area, yet to be done), pull in slash & compact slash on dozer line - No on Pkt.
L012	Completed - Inspected	hand waterbar, pull hose lay, 9/17 completed and inspected
L013	Repair Needed	water bars unnecessary, recontour and pull slash over line where possible, low cut stumps that will be seen from reservoir, pull hose
L014	Repair Needed	machine waterbar and block
L015	Repair Needed	Need to validate repair prescription
L125	In Progress	blade, shape and roll if equipment ordered to fire, if not, a lot of the road will be completed by TS maintenance
L034	Repair Needed	Place cold patch asphalt in localized, remove remaining fallen trees, logs & rounds from ditch line, 9/19-RB Dispose of tires, blade, shape and roll aggregate sections RB
L035	In Progress	Remove logs & debris from ditch line. Pull dozer berms back in blade, shape & roll, then water bar. Locations to have catch basins cleaned GPS points & red flagging. Driveable water bars flagged red RB
L036	Repair Needed	Road READs need to inspect for repair needs
L044	Repair Needed	crim inspected 9/22 top needs work, new point created
L068	Completed - Inspected	Pull back berms, seed, slash and waterbar.
L079	In Progress	new dozed line could use small excavator, some steep portions need to evaluate, 276 road waterbar and block, will be used in Boone timber sale.
L082	Repair Needed	waterbar where needed, pull in berms and slash, 9/17 completed and inspected
L171	Completed - Inspected	Excavator needed, waterbar, and seed dozer line. [Water bar road (flagged in red), berm flagged in red and orange - 9/24 RB] - Water bars and berm completed, inspected - 9/28 RB
L084	Completed - Inspected	Install non-driveable water bars (flagged in red) and entrance barrier (flagged in red and orange) - 9/24 RB
L085	Repair Needed	See general specs
L086	Completed - Inspected	waterbar, slash, and seed, medium to small excavator but would need further evaluation
L087	Repair Needed	hand waterbar, slash, seed, and pull back berms
L088	Repair Needed	Pull slash and berm. Small or medium excavator needed.
L089	Repair Needed	Nothing needed for repair 9/5
L096	Repair Needed	One large fallen down into ditch that needs excavator to clearout. Has been chipped 9/5. Still some logs and rounds to clean out of ditch.
L097	Repair Needed	Has been chipped 9/5. Some suppression logs/slash still in ditches in places.
L103	Repair Needed	Hand line. Pull slash, water bar on steeper portions, pull berms. Approximately 500 feet on old road template and another 500 feet of 0% slope, 9/15 completed and inspected
L104	Completed - Inspected	Blade, shape and roll, clean ditches, catch basins of logs/rounds, remove berms, low stump. Chipping has been completed 9/19 RB
L112	Repair Needed	Blade, shape and roll, clean ditches of logs/rounds, remove berms, low stump. Chipping has been completed 9/19 RB
L113	Repair Needed	blade and role, clean ditches and catch basins of logs, rounds and debris. Chipping has been completed 9/19 RB
L114	Repair Needed	the ditch needs to be cleaned out in the area south of burn. small excavator or hand or
L115	Repair Needed	remove logs from ditch, side cast or hauled to disposal sites, knock down berms, blade and roll (?)
L117	Repair Needed	snags pushed into ditch, needs drainage cleaned and logs moved to a disposal area or side cast
L118	Repair Needed	Pull back berms, seed and slash. Small or medium sized excavator needed.
L119	Completed - Inspected	On steep rocky portions, recontour slope and slash. On other steep portions, waterbar, pull back berms and slash. Inspected 09/17/18.
L123	Repair Needed	Blade, shape and roll, clean ditches of logs/rounds, remove berms, low stump. Chipping has been completed 9/19 RB
L128	Repair Needed	1986-126, Road as Completed Line, Needs lift of rock, bladed and ditch cleaning/reshaping due to machine work - 9/12 JH. Also needs dozer berms knocked down/shoulder repair work completed - 9/24 RB
L129	Repair Needed	1986, access road, blade roll, clean down snags out of ditch line
L155	Completed - Inspected	See general specs
L156	Completed - Inspected	HEQ Group and READs scouted. Excavator operator determined they could take care of repairs after falling crew takes care of danger trees. - 9/27 RB
L159	Repair Needed	Hand crew pull in berm & scatter brush, haul rounds to disposal site. [Excavator re-establish ditch where needed, repair dozer path outs. Install driveable water bars (5 flagged in red) 9/25 RB
L161	In Progress	Inspected 09/18/18 MW
L172	Completed - Inspected	waterbars not needed, pull berms and cover with slash, 9/17 completed and inspected
L163	Repair Needed	cover with brush, no water bars necessary, 9/17 completed
L170	Completed - Inspected	inspected
L169	Completed - Inspected	line flagging to pull
L176	Completed - Inspected	9/19 completed and inspected by mackay
L173	Completed - Inspected	
L167	Repair Needed	pull flagging, pull in brush 3
L168	Repair Needed	inspected 09/19/18
L174	Completed - Inspected	Rehab dozer line from 1986 to 1985276, it's steep, excavator operator to inspect potential for water bars, need hand crew to buck logs out for work to be done. Has been snagged. - 9/23 RB MW
L177	Repair Needed	Use excavator to pull shoulder back and re-compact (obvious) damage from harvester. Marked by red flagging on each end with 'repair shoulder' written on it. Approximately 380 feet. - 9/24 RB
L178	Completed - Inspected	Use excavator to pull shoulder back and re-compact (obvious) damage from harvester. Marked by red flagging on each end with 'repair shoulder' written on it. - 9/24 RB
L179	Completed - Inspected	Use excavator to pull shoulder back and re-compact (obvious) damage from harvester. Marked by red flagging on each end with 'repair shoulder' written on it. - 9/24 RB
L180	Completed - Inspected	Use excavator to pull shoulder back and re-compact (obvious) damage from harvester. Marked by red flagging on each end with 'repair shoulder' written on it. - 9/24 RB
L181	Completed - Inspected	Use excavator to pull shoulder back and re-compact (obvious) damage from harvester. Marked by red flagging on each end with 'repair shoulder' written on it. - 9/24 RB
L182	Completed - Inspected	Use excavator to pull shoulder back and re-compact (obvious) damage from harvester. Marked by red flagging on each end with 'repair shoulder' written on it. - 9/24 RB
L188	Completed - Inspected	Clear ditch line/obvious catch basins and inlet of heavy slash/chips/logs/rounds, hand crew/excavator needed. Flagged in red - 9/28 RB
L187	Repair Needed	Flagged in red - 9/28 RB

Terwilliger OR-WIF-180227

Fire perimeter as of 09/27/2018, 2027 hrs
11,445 acres

- Repair Status**
- Completed - Inspected
 - Completed - Ready for Inspection
 - In Progress
 - No Repair Needed
 - Other - See Comments
 - Unknown
 - Repair Needed

- Impassable Road
- Drop Point
- Helispot
- Internet Access
- Pump
- Staging Area
- Water Source
- Water Tank
- Value at Risk
- Division Break
- Completed Line
- Completed Dozer Line
- Completed Hand Line
- Road as Completed Line
- Completed Burnout
- Planned Fire Line
- Escape Route
- Arterial Road
- Collector Road
- Local Road
- Powerlines
- State Highway
- Private Ownership
- US Forest Service
- Wilderness



0 0.25 0.5 1 Miles
NAD83 UTM10N

Updated: Sep 30, 2018 @ 1514