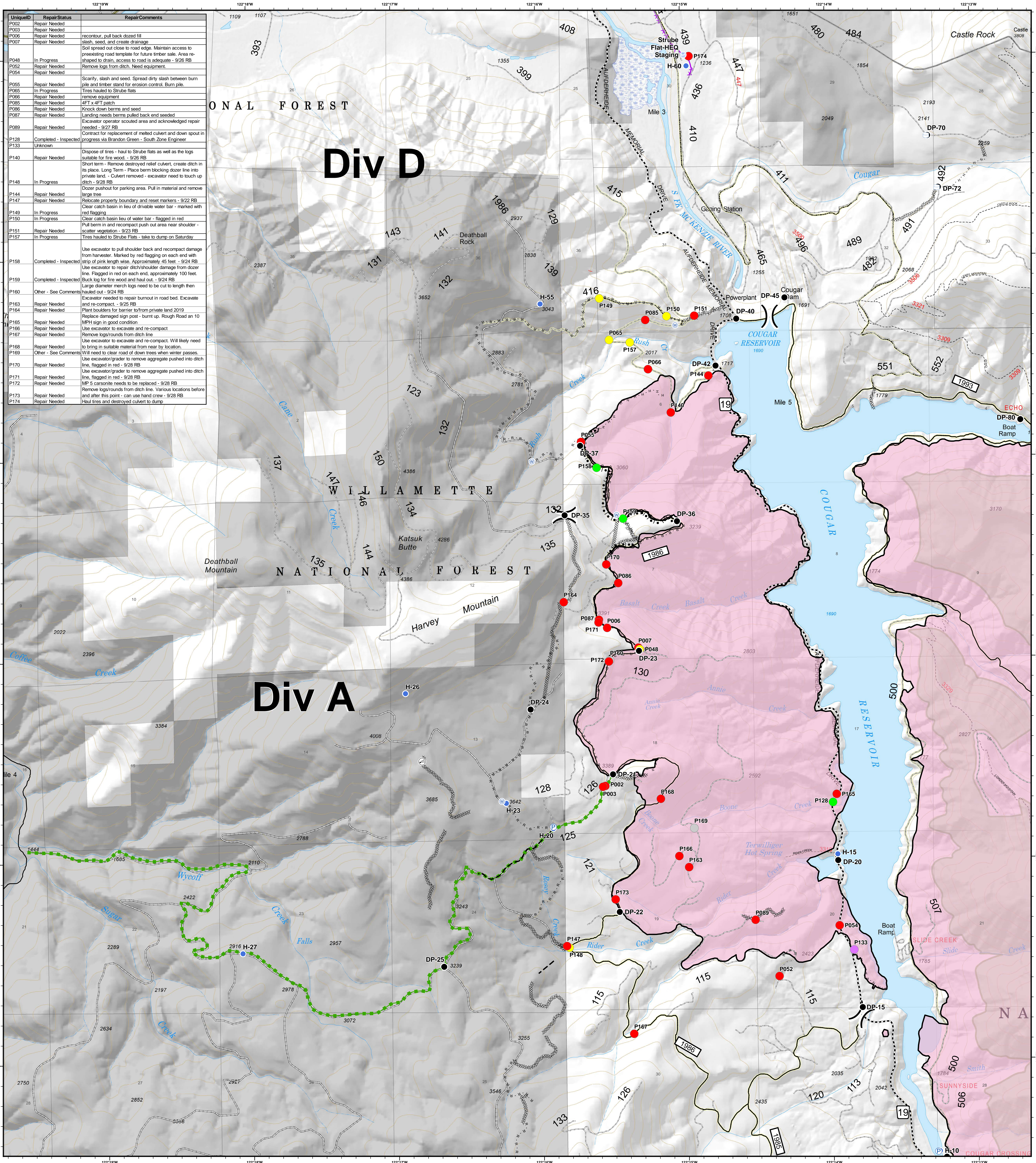


Div A/D - Point Repair Status




UniqueID	Repair Status	Repair Comments
P002	Repair Needed	
P003	Repair Needed	
P006	Repair Needed	recontour, pull back dozed fill
P007	Repair Needed	slash, seed, and create drainage
P048	In Progress	Soil spread out close to road edge. Maintain access to preceding road template for future timber sale. Area re-shaped to drain, access to road is adequate - 9/26 RB
P052	Repair Needed	Remove logs from ditch. Need equipment.
P054	Repair Needed	
P055	Repair Needed	Scarify, slash and seed. Spread dirty slash between burn pile and timber stand for erosion control. Burn pile.
P065	In Progress	Tires hauled to Strube flats
P066	Repair Needed	remove equipment
P085	Repair Needed	4FT x 4FT patch
P086	Repair Needed	Knock down berms and seed
P087	Repair Needed	Landing needs berms pulled back and seeded
P089	Repair Needed	Excavator operator scouted area and acknowledged repair needed - 9/27 RB
P128	Completed - Inspected	Contract for replacement of metal culvert and down spout in progress via Brandon Green - South Zone Engineer
P133	Unknown	
P140	Repair Needed	Dispose of tires - haul to Strube flats as well as the logs suitable for fire wood. - 9/26 RB
P148	In Progress	Short term - Remove destroyed relief culvert, create ditch in its place. Long Term - Place berm blocking dozer line into private land. - Culvert removed - excavator need to touch up ditch - 9/28 RB
P144	Repair Needed	Dozer pushout for parking area. Pull in material and remove large trees
P147	Repair Needed	Relocate property boundary and reset markers - 9/22 RB
P149	In Progress	Clear catch basin in lieu of drivable water bar - marked with red flagging
P150	In Progress	Clear catch basin in lieu of water bar - flagged in red
P151	Repair Needed	Put berm in and recompact push out area near shoulder - scatter vegetation - 9/23 RB
P157	In Progress	Tires hauled to Strube Flats - take to dump on Saturday
P158	Completed - Inspected	Use excavator to pull shoulder back and recompact damage from harvester. Marked by red flagging on each end with strip of pink length wise. Approximately 45 feet - 9/24 RB
P159	Completed - Inspected	Use excavator to repair ditch/shoulder damage from dozer line. Flagged in red on each end, approximately 100 feet. Buck log for fire wood and haul out. - 9/24 RB
P160	Other - See Comments	Large diameter merch logs need to be cut to length then hauled out - 9/24 RB
P163	Repair Needed	Excavator needed to repair burnout in road bed. Excavate and recompact. - 9/25 RB
P164	Repair Needed	Plant boulders for barrier to/from private land 2019
P165	Repair Needed	Replace damaged sign post - burnt up. Rough Road an 10 MPH sign in good condition
P166	Repair Needed	Use excavator to excavate and re-compact
P167	Repair Needed	Remove logs/rounds from ditch line
P168	Repair Needed	Use excavator to excavate and re-compact. Will likely need to bring in suitable material from near by location.
P169	Other - See Comments	Will need to clear road of down trees when winter passes. Use excavator/grader to remove aggregate pushed into ditch line, flagged in red - 9/28 RB
P170	Repair Needed	Use excavator/grader to remove aggregate pushed into ditch line, flagged in red - 9/28 RB
P171	Repair Needed	Use excavator/grader to remove aggregate pushed into ditch line, flagged in red - 9/28 RB
P172	Repair Needed	MP 5 carsonite needs to be replaced - 9/28 RB
P173	Repair Needed	Remove logs/rounds from ditch line. Various locations before and after this point. can use hand crew - 9/28 RB
P174	Repair Needed	Haul tires and destroyed culvert to dump

Terwilliger OR-WIF-180227

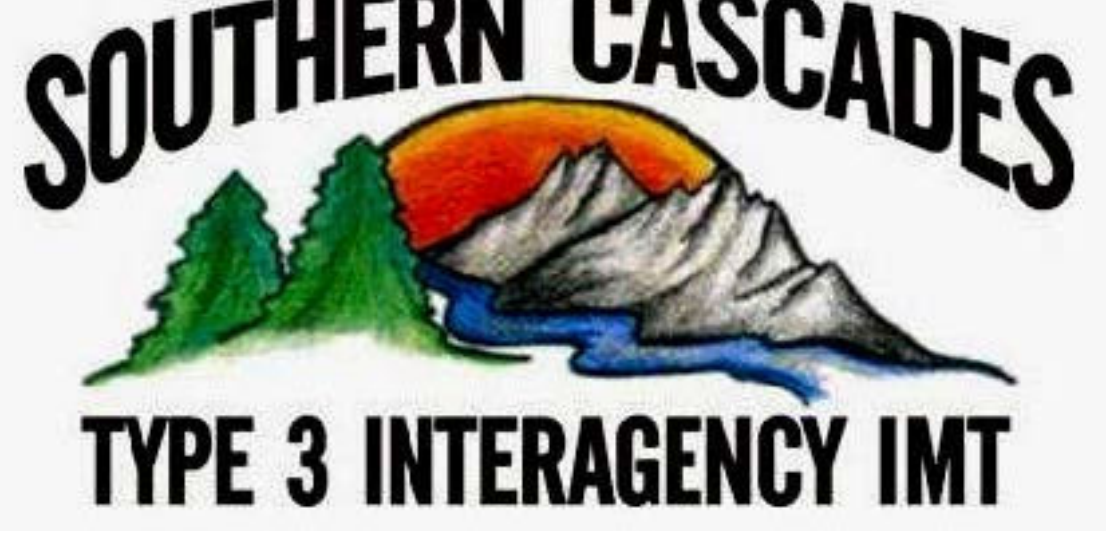
Fire perimeter as of
09/27/2018, 2027 hrs
11,445 acres

Updated:
Sep 30, 2018
@ 1530


- | | | | |
|-------------------------|-------------------|--------------------------|------------------------|
| Repair Status | ● Drop Point | ⊕ Water Tank | — Completed Line |
| ● Completed - Inspected | ● Helispot | ⊕ Value at Risk | ⊘ Completed Dozer Line |
| ● In Progress | ⊕ Internet Access | ⊕ Division Break | ⊘ Completed Hand Line |
| ● Other - See Comments | ⊕ Pump | ⊕ Road as Completed Line | ⊘ Completed Burnout |
| ● Unknown | ⊕ Staging Area | ⊕ Planned Fire Line | ⊕ Escape Route |
| ● Repair Needed | ⊕ Water Source | ⊕ Powerlines | |

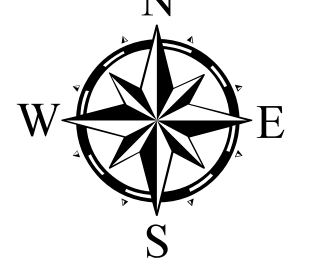


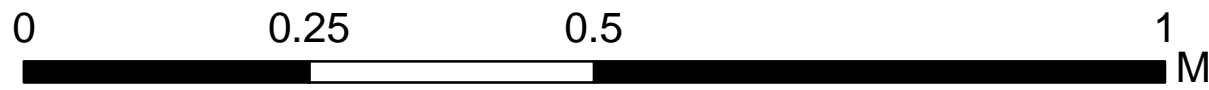
FOREST SERVICE
U.S. DEPARTMENT OF AGRICULTURE



SOUTHERN CASCADES
TYPE 3 INTERAGENCY IMT







0 0.25 0.5 1 Miles

NAD83 UTM10N