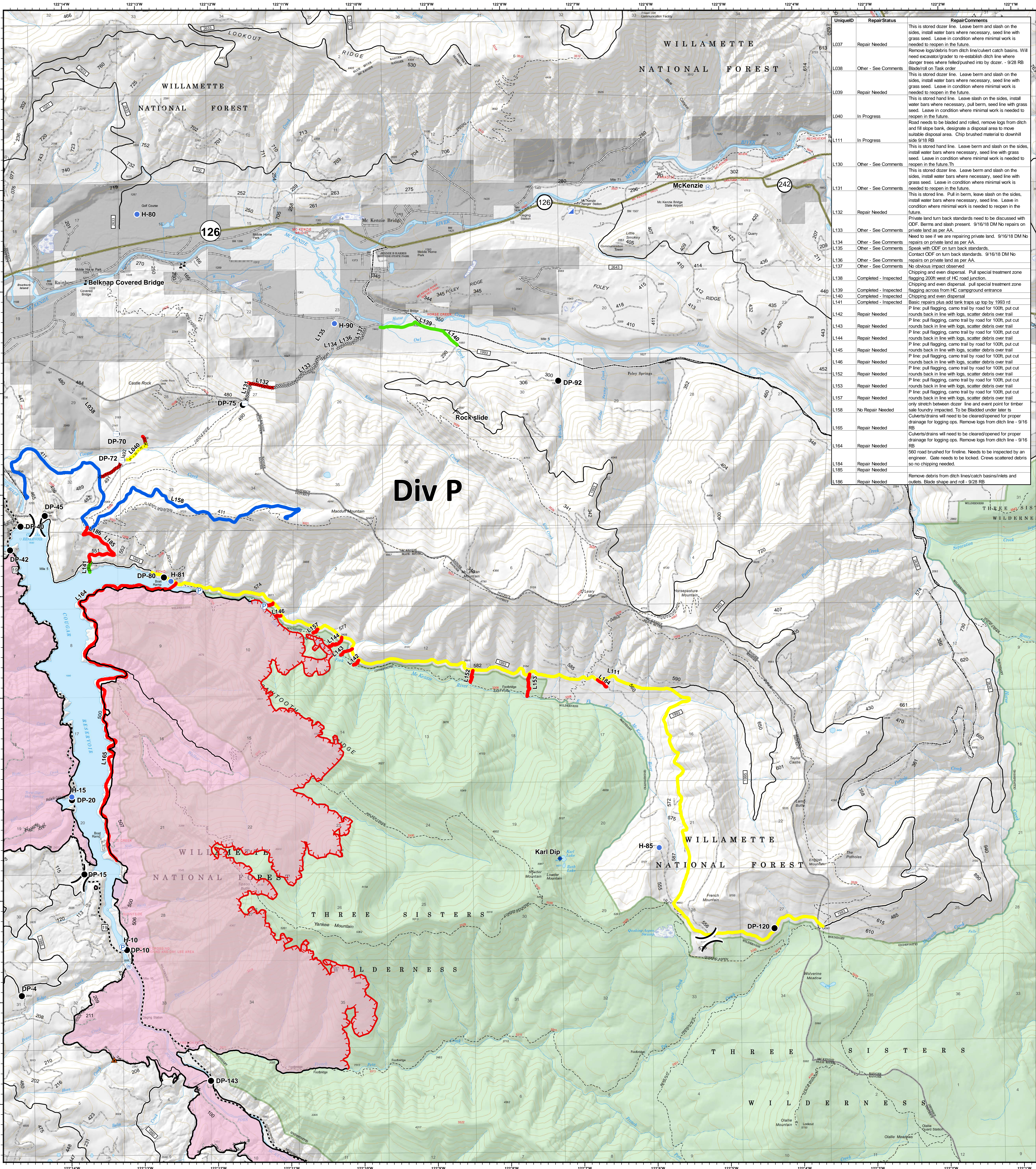


Div P - Line Repair Status



UniqueID	RepairStatus	RepairComments
L037	Repair Needed	This is stored dozer line. Leave berm and slash on the sides, install water bars where necessary, seed line with grass seed. Leave in condition where minimal work is needed to reopen in the future.
L038	Other - See Comments	
L039	Repair Needed	This is stored dozer line. Leave berm and slash on the sides, install water bars where necessary, seed line with grass seed. Leave in condition where minimal work is needed to reopen in the future.
L040	In Progress	This is stored hand line. Leave slash on the sides, install water bars where necessary, pull berm, seed line with grass seed. Leave in condition where minimal work is needed to reopen in the future.
L111	In Progress	Road needs to be bladed and rolled, remove logs from ditch and fill slope bank, designate a disposal area to move suitable disposal area. Chip brushed material to downhill side 9/28 RB
L130	Other - See Comments	This is stored hand line. Leave berm and slash on the sides, install water bars where necessary, seed line with grass seed. Leave in condition where minimal work is needed to reopen in the future.
L131	Other - See Comments	This is stored dozer line. Leave berm and slash on the sides, install water bars where necessary, seed line with grass seed. Leave in condition where minimal work is needed to reopen in the future.
L132	Repair Needed	This is stored line. Pull in berm, leave slash on the sides, install water bars where necessary, seed line. Leave in condition where minimal work is needed to reopen in the future.
L133	Other - See Comments	Private land turn back standards need to be discussed with ODF. Berms and slash present. 9/16/18 DM No repairs on private land as per AA.
L134	Other - See Comments	Needs to see if area requiring private land. 9/16/18 DM No repairs on private land as per AA.
L135	Other - See Comments	Speak with ODF on turn back standards.
L136	Other - See Comments	Contact ODF on turn back standards. 9/16/18 DM No repairs on private land as per AA.
L137	Other - See Comments	No obvious impact observed.
L138	Completed - Inspected	Chipping and even dispersal. Pull special treatment zone flagging across from HC road junction.
L139	Completed - Inspected	Chipping and even dispersal.
L140	Completed - Inspected	Chipping and even dispersal.
L141	Completed - Inspected	Basic repairs plus add tank traps up top by 1993 rd
L142	Repair Needed	P line, pull flagging, camo trail by road for 100ft, put out rounds back in line with logs, scatter debris over trail
L143	Repair Needed	P line, pull flagging, camo trail by road for 100ft, put out rounds back in line with logs, scatter debris over trail
L144	Repair Needed	P line, pull flagging, camo trail by road for 100ft, put out rounds back in line with logs, scatter debris over trail
L145	Repair Needed	P line, pull flagging, camo trail by road for 100ft, put out rounds back in line with logs, scatter debris over trail
L146	Repair Needed	P line, pull flagging, camo trail by road for 100ft, put out rounds back in line with logs, scatter debris over trail
L152	Repair Needed	P line, pull flagging, camo trail by road for 100ft, put out rounds back in line with logs, scatter debris over trail
L153	Repair Needed	P line, pull flagging, camo trail by road for 100ft, put out rounds back in line with logs, scatter debris over trail
L157	Repair Needed	only stretch between dozer line and event point for timber sale roadway impacted. To be Bladed under later in
L158	No Repair Needed	Culverts/drains will need to be cleared/opened for proper drainage for logging ops. Remove logs from ditch line - 9/16 RB
L165	Repair Needed	Culverts/drains will need to be cleared/opened for proper drainage for logging ops. Remove logs from ditch line - 9/16 RB
L164	Repair Needed	560 road brushed for fireline. Needs to be inspected by an engineer. Gate needs to be locked. Crews scattered debris so no chipping needed.
L184	Repair Needed	
L185	Repair Needed	
L186	Repair Needed	Remove debris from ditch lines/catch basins/inlets and outlets. Blade shape and roll - 9/28 RB

Terwilliger
OR-WIF-180227

Fire perimeter as of
09/27/2018, 2027 hrs
11,445 acres

Updated:
Sep 30, 2018
@ 1509

- | | | | | |
|------------------------------------|-------------------------|--------------------------|----------------------------|---------------------|
| Repair Status | ▲ Impassable Road | Ⓟ Pump | — Completed Line | ▨ Private Ownership |
| 🟢 Completed - Inspected | ✕ Closure | Ⓢ Water Source | ⓧ Completed Dozer Line | ▨ US Forest Service |
| 🟠 Completed - Ready for Inspection | ♦ Dip Site | Ⓣ Water Tank | ⓧⓧⓧ Completed Hand Line | ▨ Wilderness |
| 🟡 In Progress | ● Drop Point | Ⓤ Value at Risk | ⓧⓧⓧ Road as Completed Line | |
| 🔵 No Repair Needed | ⊙ Helibase |) Division Break | ⓧⓧⓧ Powerlines | |
| ⚪ Other - See Comments | ⊙ Helispot | — State Highway | ⓧⓧⓧ Arterial Road | |
| ⚪ Unknown | Ⓜ Incident Command Post | — Collector Road | ⓧⓧⓧ Local Road | |
| 🔴 Repair Needed | | — Uncontrolled Fire Edge | | |

SOUTHERN CASCADES
TYPE 3 INTERAGENCY IMT

US FOREST SERVICE
WILDERNESS

NAD83 UTM10N

0 0.5 1 2 Miles