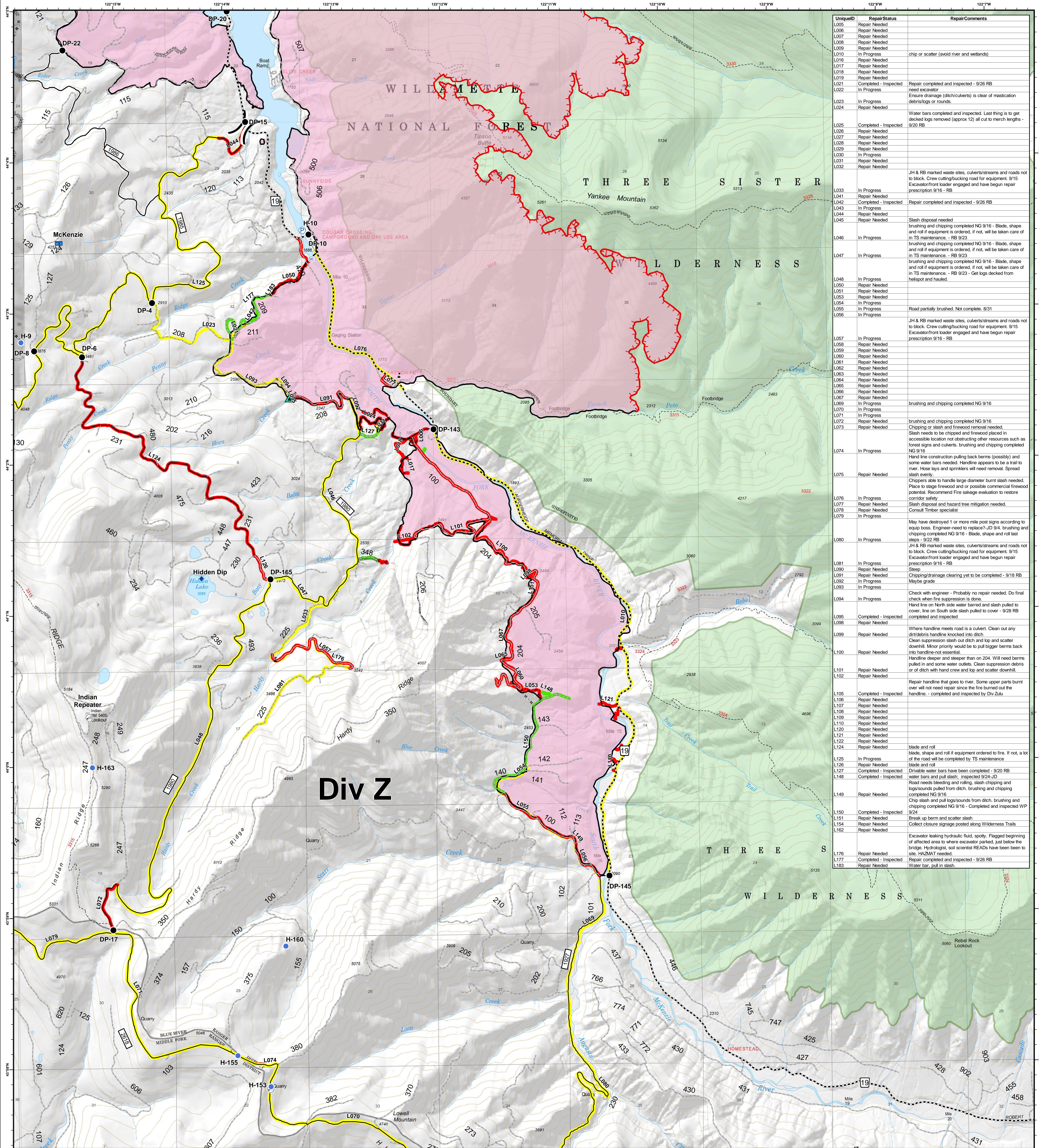


Div Z - Line Repair Status



UniqueID	Repair Status	Repair Comments
L005	Repair Needed	
L006	Repair Needed	
L007	Repair Needed	
L008	Repair Needed	
L009	Repair Needed	
L010	In Progress	chip or scatter (avoid river and wetlands)
L011	Repair Needed	
L012	Repair Needed	
L013	Repair Needed	
L014	Repair Needed	
L015	Repair Needed	
L016	Repair Needed	
L017	Repair Needed	
L018	Repair Needed	
L019	Repair Needed	
L020	Completed - Inspected	Repair completed and inspected - 9/26 RB
L021	In Progress	need excavator
L022	In Progress	Ensure drainage (ditch/culverts) is clear of mastication debris/logs or rounds.
L023	Repair Needed	
L024	Repair Needed	Water bars completed and inspected. Last thing is to get decked logs removed (approx 12) all cut to merch lengths - 9/20 RB
L025	Completed - Inspected	
L026	Repair Needed	
L027	Repair Needed	
L028	Repair Needed	
L029	Repair Needed	
L030	In Progress	
L031	Repair Needed	
L032	Repair Needed	JH & RB marked waste sites, culverts/streams and roads not to block. Crew outbacking road for equipment 9/15 Excavator/front loader engaged and have begun repair prescription 9/16 - RB
L033	In Progress	
L041	Repair Needed	
L042	Completed - Inspected	Repair completed and inspected - 9/26 RB
L043	In Progress	
L044	Repair Needed	
L045	Repair Needed	Slash disposal needed
L046	In Progress	brushing and chipping completed NG 9/16 - Blade, shape and roll if equipment is ordered, if not, will be taken care of in TS maintenance. - RB 9/23
L047	In Progress	brushing and chipping completed NG 9/16 - Blade, shape and roll if equipment is ordered, if not, will be taken care of in TS maintenance. - RB 9/23 - Get logs decked from helispot and heeled.
L048	In Progress	
L050	Repair Needed	
L051	Repair Needed	
L053	Repair Needed	
L054	In Progress	
L055	In Progress	Road partially brushed. Not complete. 8/31
L056	In Progress	
L057	In Progress	
L058	Repair Needed	
L059	Repair Needed	
L060	Repair Needed	
L061	Repair Needed	
L062	Repair Needed	
L063	Repair Needed	
L064	Repair Needed	
L065	Repair Needed	
L066	Repair Needed	
L067	Repair Needed	
L068	In Progress	brushing and chipping completed NG 9/16
L070	In Progress	
L071	In Progress	
L072	Repair Needed	brushing and chipping completed NG 9/16
L073	Repair Needed	Chipping or slash and firewood removal needed. Slash needs to be chipped and firewood placed in accessible location not obstructing other resources such as forest signs and culverts. brushing and chipping completed NG 9/16
L074	In Progress	Hand line construction pulling back berms (possibly) and some water bars needed. Handline appears to be a trail to river. Hose lays and sprinklers will need removal. Spread slash evenly.
L075	Repair Needed	Chippers able to handle large diameter burnt slash needed. Place to stage firewood and or possible commercial firewood potential. Recommend Fire salvage evaluation to restore corridor safety
L076	In Progress	Slash disposal and hazard tree mitigation needed.
L077	Repair Needed	Consult Timber specialist
L078	Repair Needed	
L079	In Progress	May have destroyed 1 or more mile post signs according to equip boss. Engineer-need to replace? JD 9/4. brushing and chipping completed NG 9/16 - Blade, shape and roll last steps - 9/22 RB
L080	In Progress	JH & RB marked waste sites, culverts/streams and roads not to block. Crew outbacking road for equipment 9/15 Excavator/front loader engaged and have begun repair prescription 9/16 - RB
L081	In Progress	
L090	Repair Needed	Sleep
L091	Repair Needed	Chipping/drainage clearing yet to be completed - 9/18 RB
L092	In Progress	Maybe grade
L093	In Progress	
L094	In Progress	Check with engineer - Probably no repair needed. Do final check when fire suppression is done.
L095	Completed - Inspected	Hand line on North side water barred and slash pulled to cover, line on South side slash pulled to cover - 9/28 RB completed and inspected
L098	Repair Needed	
L099	Repair Needed	Where handline meets road is a culvert. Clean out any dirt/debris handline knocked into ditch.
L100	Repair Needed	Clean suppression slash out ditch and top and scatter downhill. Minor priority would be to pull bigger berms back into handline not essential.
L101	Repair Needed	Handline deeper and steeper than on 204. Will need berms pulled in and some water outlets. Clean suppression debris or of ditch with hand crew and top and scatter downhill.
L102	Repair Needed	Repair handline that goes to river. Some upper parts burnt over will not need repair since the fire burned out the handline. - completed and inspected by Div Zulu
L105	Completed - Inspected	
L106	Repair Needed	blade and roll
L107	Repair Needed	blade and roll
L108	Repair Needed	blade and roll
L109	Repair Needed	
L110	Repair Needed	
L120	Repair Needed	
L121	Repair Needed	
L122	Repair Needed	
L124	Repair Needed	
L125	In Progress	blade and roll
L126	Repair Needed	blade and roll
L127	Completed - Inspected	Driveable water bars have been completed - 9/20 RB
L148	Completed - Inspected	water bars and pull slash. - inspected 9/24-JD
L149	Repair Needed	Road needs bleeding and rolling, slash chipping and logs/sounds pulled from ditch. brushing and chipping completed NG 9/16
L150	Completed - Inspected	Chip slash and pull logs/sounds from ditch. brushing and chipping completed NG 9/16 - Completed and inspected WP 9/24
L151	Repair Needed	Break up berm and scatter slash
L154	Repair Needed	Collect closure signage posted along Wilderness Trails
L162	Repair Needed	
L176	Repair Needed	Excavator leaking hydraulic fluid, spotty. Flagged beginning of affected area to where excavator parked, just below the bridge. Hydrologist, soil scientist READs have been been to site. HAZMAT needed.
L177	Completed - Inspected	Repair completed and inspected - 9/26 RB
L183	Repair Needed	Water bar, pull in slash.

Terwilliger OR-WIF-180227

Fire perimeter as of 09/27/2018, 2027 hrs
11,445 acres

Updated: Sep 30, 2018 @ 1459

- | | | | | | | | | | | | | | | | | | | | | | | | | |
|----------------------|-----------------------|-------------|---------------|-----------------|----------|------------|----------|-----------------|---------------------|------|----------|--------------|---------------|------------------------|----------------|----------------------|---------------------|------------------------|---------------|----------------|------------|-------------------|-------------------|------------|
| Repair Status | Completed - Inspected | In Progress | Repair Needed | Impassable Road | Dip Site | Drop Point | Helispot | Internet Access | Mobile Weather Unit | Pump | Repeater | Water Source | Value at Risk | Uncontrolled Fire Edge | Completed Line | Completed Dozer Line | Completed Hand Line | Road as Completed Line | Arterial Road | Collector Road | Local Road | Private Ownership | US Forest Service | Wilderness |
|----------------------|-----------------------|-------------|---------------|-----------------|----------|------------|----------|-----------------|---------------------|------|----------|--------------|---------------|------------------------|----------------|----------------------|---------------------|------------------------|---------------|----------------|------------|-------------------|-------------------|------------|

0 0.25 0.5 1 Miles

NAD83 UTM10N