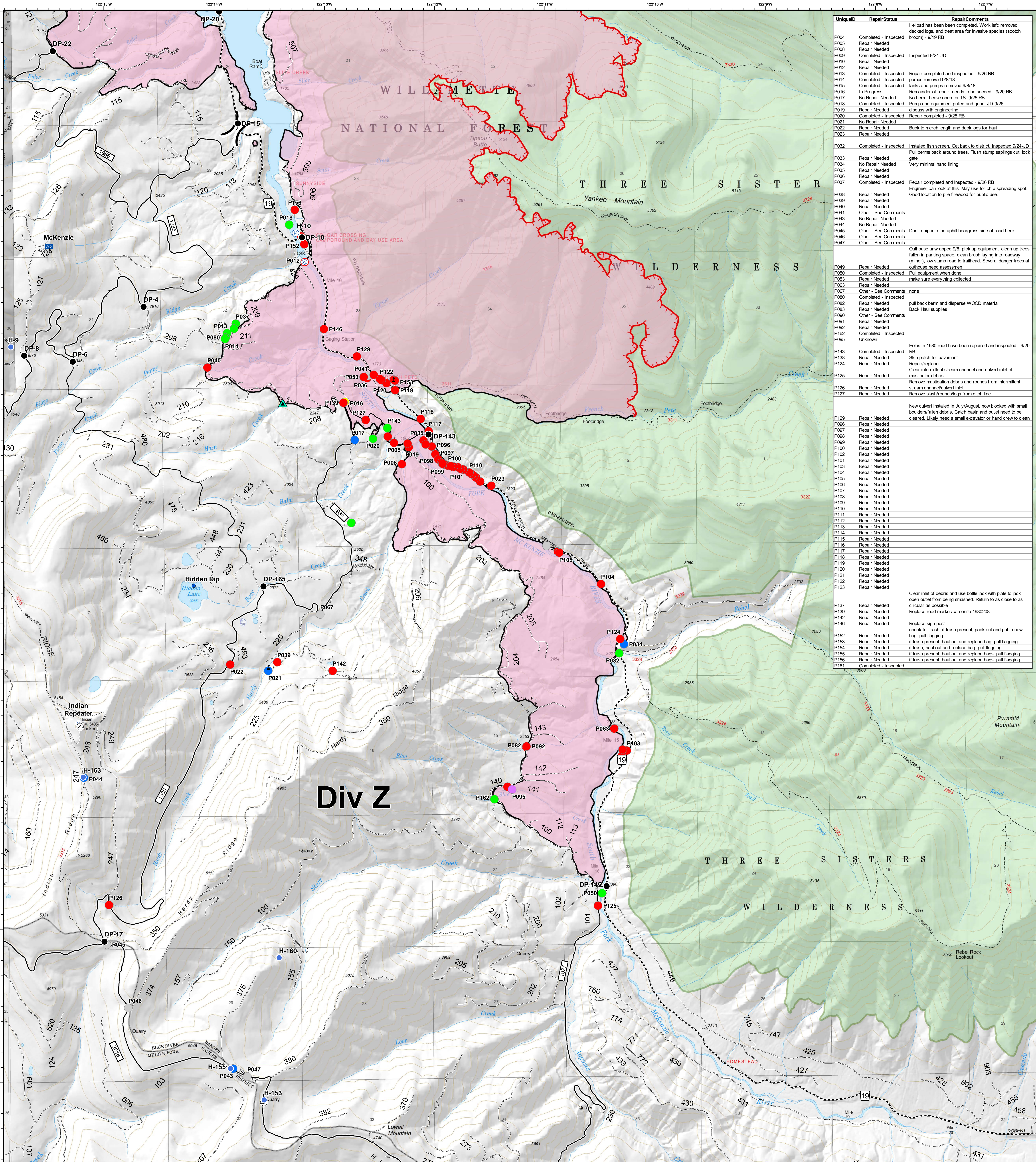


# Div Z - Point Repair Status



UniqueID	Repair Status	Repair Comments
P004	Completed - Inspected	Helipad has been completed. Work left: removed decked logs and treat area for invasive species (scotch broom) - 9/19 RB
P005	Repair Needed	
P008	Repair Needed	
P009	Completed - Inspected	Inspected 9/24-JD
P010	Repair Needed	
P012	Repair Needed	
P013	Completed - Inspected	Repair completed and inspected - 9/26 RB
P014	Completed - Inspected	pumps removed 9/8/18
P015	Completed - Inspected	tanks and pumps removed 9/8/18
P016	In Progress	Remainder of repair: needs to be seeded - 9/20 RB
P017	No Repair Needed	No berm. Leave open for TS. 9/25 RB
P018	Completed - Inspected	Pump and equipment pulled and gone. JD-9/26
P019	Repair Needed	discuss with engineering
P020	Completed - Inspected	Repair completed - 9/25 RB
P021	No Repair Needed	
P022	Repair Needed	Back to merch length and deck logs for haul
P023	Repair Needed	
P032	Completed - Inspected	Installed fish screen. Get back to district. Inspected 9/24-JD
P033	Repair Needed	Pull berms back around trees. Flush stump saplings out, lock gate
P034	No Repair Needed	Very minimal hand lining
P035	Repair Needed	
P036	Repair Needed	
P037	Completed - Inspected	Repair completed and inspected - 9/26 RB
P038	Repair Needed	Engineer can look at this. May use for chip spreading spot.
P039	Repair Needed	Good location to pile firewood for public use.
P040	Repair Needed	
P041	Other - See Comments	
P043	No Repair Needed	
P044	No Repair Needed	
P045	Other - See Comments	Don't chip into the uphill beargrass side of road here
P046	Other - See Comments	
P047	Other - See Comments	
P049	Repair Needed	Outhouse unwrapped 9/6, pick up equipment, clean up trees fallen in parking space, clean brush laying into roadway (minor), low slump road to trailhead. Several danger trees at outhouse need assessment.
P050	Completed - Inspected	Pull equipment when done
P053	Repair Needed	make sure everything collected
P063	Repair Needed	none
P067	Other - See Comments	
P080	Completed - Inspected	
P082	Repair Needed	pull back berm and disperse WOOD material
P083	Repair Needed	Back Haul supplies
P090	Other - See Comments	
P091	Repair Needed	
P092	Repair Needed	
P162	Completed - Inspected	
P095	Unknown	
P143	Completed - Inspected	Holes in 1980 road have been repaired and inspected - 9/20 RB
P138	Repair Needed	Skin patch for pavement
P124	Repair Needed	Repair/replace
P125	Repair Needed	Clear intermittent stream channel and culvert inlet of mass/cator debris
P126	Repair Needed	Remove mastication culvert and rounds from intermittent stream channel/culvert inlet
P127	Repair Needed	Remove slash/rounds/logs from ditch line
P129	Repair Needed	New culvert installed in July/AUGUST, now blocked with small boulders/fallen debris. Catch basin and outlet need to be cleared. Likely need a small excavator or hand crew to clean
P097	Repair Needed	
P098	Repair Needed	
P099	Repair Needed	
P100	Repair Needed	
P102	Repair Needed	
P101	Repair Needed	
P103	Repair Needed	
P104	Repair Needed	
P105	Repair Needed	
P106	Repair Needed	
P107	Repair Needed	
P108	Repair Needed	
P109	Repair Needed	
P110	Repair Needed	
P111	Repair Needed	
P112	Repair Needed	
P113	Repair Needed	
P114	Repair Needed	
P115	Repair Needed	
P116	Repair Needed	
P117	Repair Needed	
P118	Repair Needed	
P119	Repair Needed	
P120	Repair Needed	
P121	Repair Needed	
P122	Repair Needed	
P123	Repair Needed	
P137	Repair Needed	check for trash, if trash present, pack out and put in new bag, pull flagging
P139	Repair Needed	check for trash, if trash present, haul out and replace bag, pull flagging
P142	Repair Needed	check for trash, if trash present, haul out and replace bag, pull flagging
P146	Repair Needed	check for trash, if trash present, haul out and replace bags, pull flagging
P152	Repair Needed	check for trash, if trash present, haul out and replace bags, pull flagging
P153	Repair Needed	check for trash, if trash present, haul out and replace bags, pull flagging
P154	Repair Needed	check for trash, if trash present, haul out and replace bags, pull flagging
P155	Repair Needed	check for trash, if trash present, haul out and replace bags, pull flagging
P156	Repair Needed	check for trash, if trash present, haul out and replace bags, pull flagging
P161	Completed - Inspected	

## Terwilliger OR-WIF-180227

Fire perimeter as of 09/27/2018, 2027 hrs  
11,445 acres

Updated: Sep 30, 2018 @ 1436

- |                      |                       |                 |                      |                        |                        |
|----------------------|-----------------------|-----------------|----------------------|------------------------|------------------------|
| <b>Repair Status</b> | Completed - Inspected | Impassable Road | Repeater             | Uncontrolled Fire Edge | Completed Hand Line    |
| In Progress          | Dip Site              | Water Source    | Value at Risk        | Completed Line         | Road as Completed Line |
| No Repair Needed     | Helispot              | Division Break  | Completed Dozer Line | Arterial Road          | Collector Road         |
| Other - See Comments | Internet Access       |                 |                      | Local Road             | Private Ownership      |
| Unknown              | Mobile Weather Unit   |                 |                      | US Forest Service      | Wilderness             |
| Repair Needed        | Pump                  |                 |                      |                        |                        |

FOREST SERVICE  
U.S. DEPARTMENT OF AGRICULTURE

**SOUTHERN CASCADES**  
TYPE 3 INTERAGENCY IMT

N  
W E  
S

0 0.25 0.5 1 Miles

NAD83 UTM10N