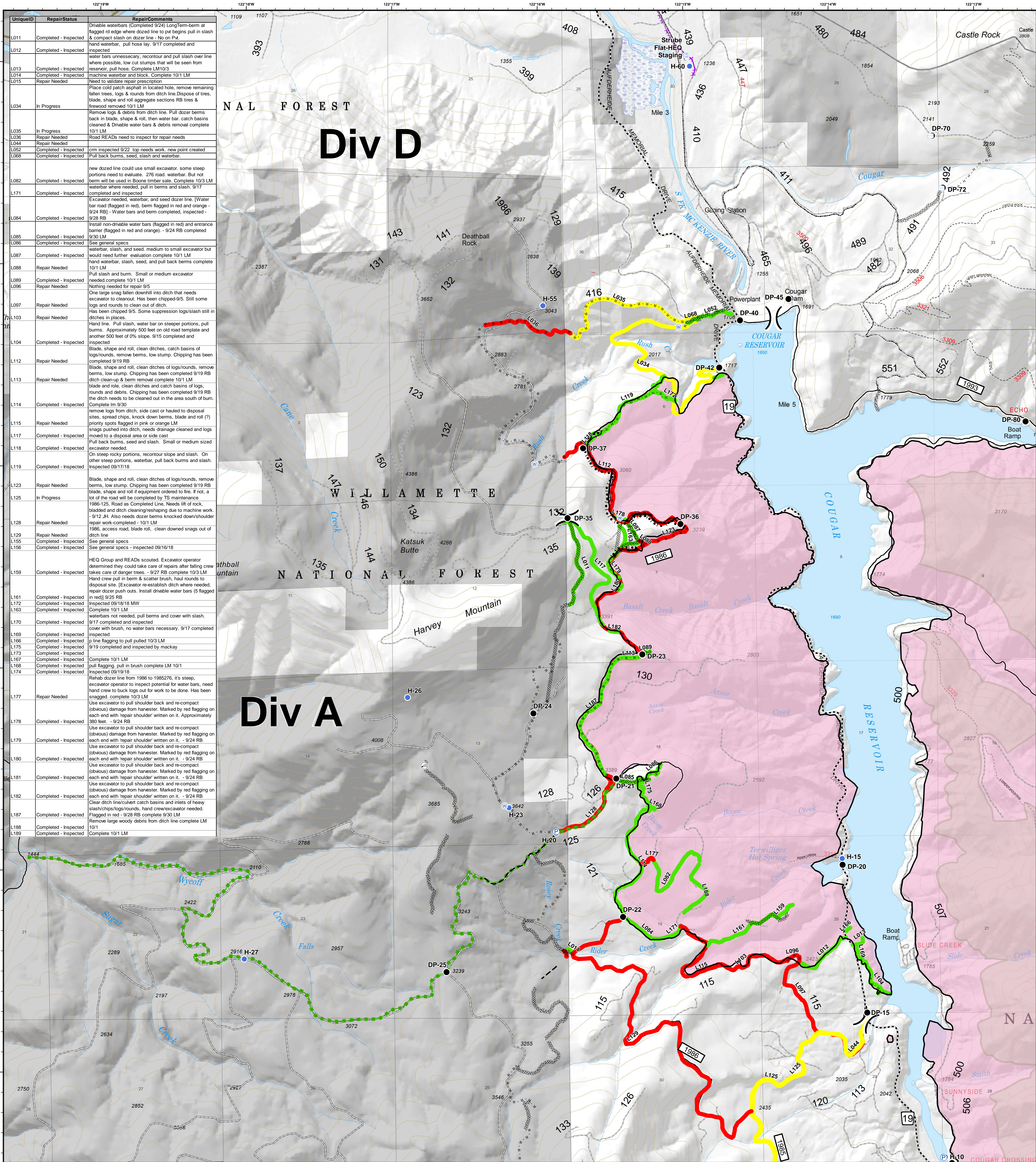


# Div A/D - Line Repair Status



UniqueID	RepairStatus	RepairComments
L011	Completed - Inspected	Driveable waterbars (Completed 9/24) Long-Term berm at flagged rd edge where dozed line to Pk begins pull in slash & compact slash on dozer line - No on Pk.
L012	Completed - Inspected	hand waterbar, pull hose lay, 9/17 completed and inspected
L013	Completed - Inspected	water bars unnecessary, recontour and pull slash over line where possible, low cut stumps that will be seen from reservoir, pull hose. Complete LM10/3
L014	Completed - Inspected	machine waterbar and block. Complete 10/1 LM
L015	Repair Needed	Need to validate repair prescription
L034	In Progress	Place cold patch asphalt in located hole, remove remaining fallen trees, logs & rounds from ditch line. Dispose of tires, blade, shape and roll aggregate sections RB tires & firewood removed 10/1 LM
L035	In Progress	Remove logs & debris from ditch line. Pull dozer berms back in blade, shape & roll, then water bar, catch basins cleaned & Driveable water bars & debris removal complete 10/1 LM
L036	Repair Needed	Road READAs need to inspect for repair needs
L044	Repair Needed	om inspected 9/22 top needs work, new point created
L052	Completed - Inspected	Pull back berms, seed, slash and waterbar.
L056	Completed - Inspected	new dozed line could use small excavator, some steep portions need to evaluate, 276 road, waterbar. But not berm will be used in Boone timber on side. Complete 10/3 LM waterbar where needed, pull in berms and slash, 9/17 completed and inspected
L082	Completed - Inspected	Excavator needed, waterbar, and seed dozer line. [Water bar road (flagged in red), berm flagged in red and orange - 9/24 RB] - Water bars and berm completed, inspected - 9/28 RB
L171	Completed - Inspected	Install non-driveable water bars (flagged in red) and entrance barrier (flagged in red and orange) - 9/24 RB completed 9/30 LM
L084	Completed - Inspected	See general specs
L085	Completed - Inspected	waterbar, slash, and seed, medium to small excavator but would need further evaluation complete 10/1 LM
L086	Completed - Inspected	hand waterbar, slash, seed, and pull back berms complete 10/1 LM
L087	Repair Needed	Pull slash and berm. Small or medium excavator needed complete 10/1 LM
L088	Repair Needed	Nothing needed for repair 9/5
L089	Completed - Inspected	One large snag fallen downhill into ditch that needs excavator to cleanout. Has been chipped 9/5. Still some logs and rounds to clean out of ditch.
L096	Repair Needed	Has been chipped 9/5. Some suppression logs/slash still in ditches in places.
L097	Repair Needed	Hand line. Pull slash, water bar on steeper portions, pull berms. Approximately 500 feet on old road terminate and another 500 feet of 0% slope, 9/15 completed and inspected
L103	Repair Needed	Blade, shape and roll, clean ditches, catch basins of logs/rounds, remove berms, low stump. Chipping has been completed 9/19 RB
L104	Completed - Inspected	Blade, shape and roll, clean ditches of logs/rounds, remove berms, low stump. Chipping has been completed 9/19 RB ditch clean-up & berm removal complete 10/1 LM
L112	Repair Needed	blade and role, clean ditches and catch basins of logs, rounds and debris. Chipping has been completed 9/19 RB the ditch needs to be cleaned out in the area south of berm. Complete 10/1 LM
L113	Repair Needed	remove logs from ditch, side cast or hauled to disposal sites, spread chips, knock down berms, blade and roll (?) priority spots flagged in pink or orange LM
L114	Completed - Inspected	snags pushed into ditch, needs drainage cleaned and logs moved to a disposal area or side cast
L115	Repair Needed	Pull back berms, seed and slash. Small or medium sized excavator needed
L117	Completed - Inspected	On steep rocky portions, recontour slope and slash. On other steep portions, waterbar, pull back berms and slash. Inspected 09/17/18
L118	Completed - Inspected	Blade, shape and roll, clean ditches of logs/rounds, remove berms, low stump. Chipping has been completed 9/19 RB blade, shape and roll if equipment ordered to fire. If not, a lot of the road will be completed by TS maintenance
L119	Completed - Inspected	1986-125. Road as Completed Line. Needs lift of rock, bladed and ditch cleaning/reshaping due to machine work - 9/12 JH. Also needs dozer berms knocked down/shoulder repair work-completed - 10/1 LM
L123	Repair Needed	1986, access road, blade roll, clean down snags out of ditch line
L125	In Progress	See general specs - inspected 09/16/18
L128	Repair Needed	See general specs - inspected 09/16/18
L129	Repair Needed	HEQ Group and READAs scouted. Excavator operator determined they could take care of repairs, after falling crew takes care of danger trees. - 9/27 RB complete 10/3 LM
L155	Completed - Inspected	Hand crew pull in berm & scatter brush, haul rounds to disposal site. (Excavator re-establish ditch where needed, repair dozer push outs. Install driveable water bars (5 flagged in red) 9/25 RB
L156	Completed - Inspected	Inspected 09/16/18 MW
L159	Completed - Inspected	Complete 10/1 LM
L161	Completed - Inspected	waterbars not needed, pull berms and cover with slash, 9/17 completed and inspected
L162	Completed - Inspected	cover with slash, no water bars necessary, 9/17 completed inspected
L163	Completed - Inspected	p line flagging to pull pulled 10/3 LM
L169	Completed - Inspected	9/19 completed and inspected by mackay
L170	Completed - Inspected	Complete 10/1 LM
L176	Completed - Inspected	pull flagging, pull in brush complete LM 10/1
L177	Repair Needed	Inspected 09/19/18
L178	Completed - Inspected	Rehab dozer line from 1986 to 1985276. It's steep, excavator operator to inspect potential for water bars, need hand crew to buck logs out for work to be done. Has been snagged, complete 10/3 LM
L179	Completed - Inspected	Use excavator to pull shoulder back and re-compact (obvious) damage from harvester. Marked by red flagging on each end with 'repair shoulder' written on it. - 9/24 RB
L180	Completed - Inspected	Use excavator to pull shoulder back and re-compact (obvious) damage from harvester. Marked by red flagging on each end with 'repair shoulder' written on it. - 9/24 RB
L181	Completed - Inspected	Use excavator to pull shoulder back and re-compact (obvious) damage from harvester. Marked by red flagging on each end with 'repair shoulder' written on it. - 9/24 RB
L182	Completed - Inspected	Use excavator to pull shoulder back and re-compact (obvious) damage from harvester. Marked by red flagging on each end with 'repair shoulder' written on it. - 9/24 RB
L187	Completed - Inspected	Clear ditch line/catch basins and mites of heavy slash/chips/logs/rounds, hand crew/excavator needed. Flagged in red - 9/28 RB complete 9/30 LM
L188	Completed - Inspected	Remove large woody debris from ditch line complete LM 10/1
L189	Completed - Inspected	Complete 10/1 LM

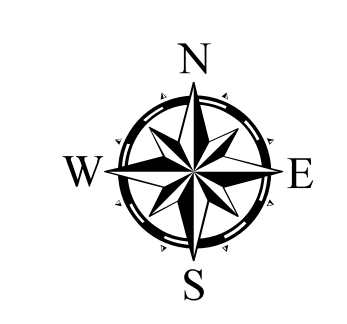
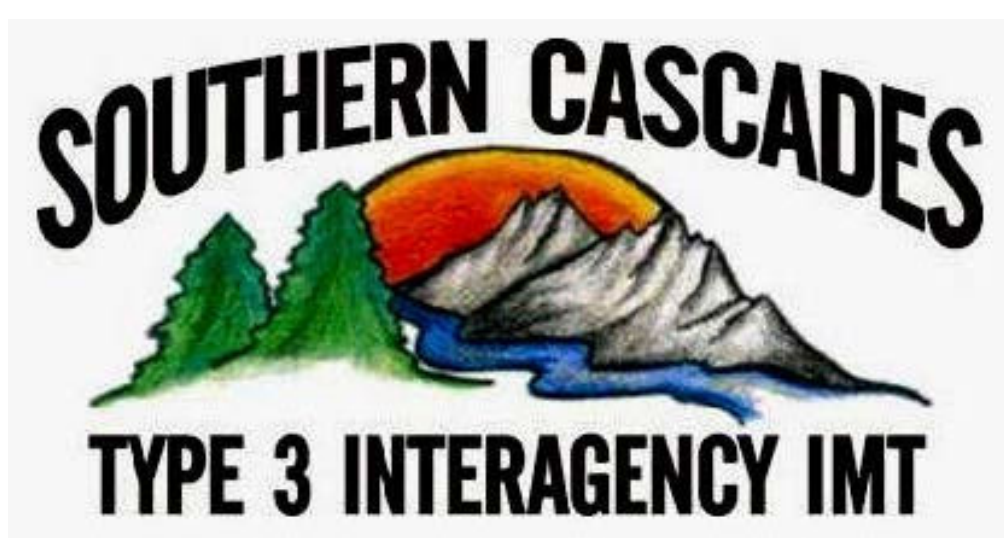
## Terwilliger OR-WIF-180227

Fire perimeter as of 09/27/2018, 2027 hrs  
11,445 acres

Updated: Oct 04, 2018 @ 0825

- Repair Status**
- Completed - Inspected
  - Completed - Ready for Inspection
  - In Progress
  - No Repair Needed
  - Other - See Comments
  - Unknown
  - Repair Needed

- ▲ Impassable Road
- Drop Point
- Helispot
- P Internet Access
- P Pump
- S Staging Area
- W Water Source
- T Water Tank
- V Value at Risk
- ) Division Break
- Completed Line
- - - Completed Dozer Line
- - - Completed Hand Line
- - - Road as Completed Line
- - - Completed Burnout
- - - Planned Fire Line
- - - Escape Route
- - - Arterial Road
- - - Collector Road
- - - Local Road
- - - Powerlines
- - - State Highway
- Private Ownership
- US Forest Service
- Wilderness



0 0.25 0.5 1 Miles  
NAD83 UTM10N